

4-4-00

HOCKING COUNTY

Sec. 2 T12 R18

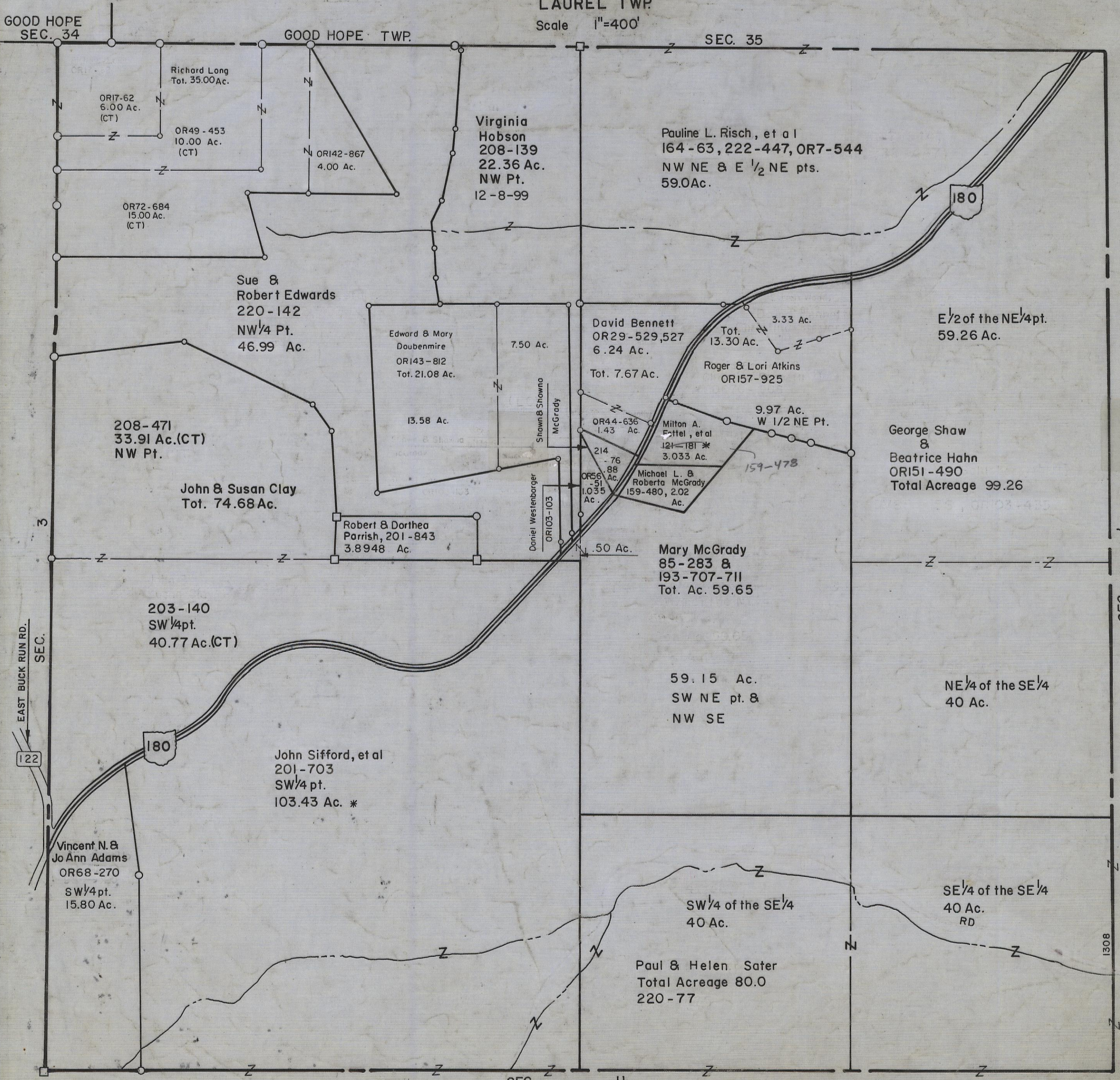
LAUREL TWP

Scale 1"=400'

GOOD HOPE SEC. 34

GOOD HOPE TWP.

SEC. 35



Richard Long
Tot. 35.00 Ac.

OR17-62
6.00 Ac.
(CT)

OR49-453
10.00 Ac.
(CT)

OR142-867
4.00 Ac.

Virginia
Hobson
208-139
22.36 Ac.
NW Pt.
12-8-99

Pauline L. Risch, et al
164-63, 222-447, OR7-544
NW NE & E 1/2 NE pts.
59.0 Ac.

OR72-684
15.00 Ac.
(CT)

Sue &
Robert Edwards
220-142
NW 1/4 Pt.
46.99 Ac.

Edward & Mary
Doubenmire
OR143-812
Tot. 21.08 Ac.

7.50 Ac.

David Bennett
OR29-529, 527
6.24 Ac.

Tot. 13.30 Ac.
3.33 Ac.
Roger & Lori Atkins
OR157-925

E 1/2 of the NE 1/4 pt.
59.26 Ac.

208-471
33.91 Ac. (CT)
NW Pt.

13.58 Ac.

Shawn & Showna
McGrady

OR44-636
1.43 Ac.

Milton A.
Fittel, et al
121-181 *
3.033 Ac.

9.97 Ac.
W 1/2 NE Pt.

George Shaw
&
Beatrice Hahn
OR151-490
Total Acreage 99.26

John & Susan Clay
Tot. 74.68 Ac.

Robert & Doretha
Parrish, 201-843
3.8948 Ac.

Daniel Westenberg
OR103-103

214-76-88
1.035 Ac.

Michael L. &
Roberta McGrady
159-480, 2.02
Ac.

Mary McGrady
85-283 &
193-707-711
Tot. Ac. 59.65

203-140
SW 1/4 pt.
40.77 Ac. (CT)

59.15 Ac.
SW NE pt. &
NW SE

NE 1/4 of the SE 1/4
40 Ac.

John Sifford, et al
201-703
SW 1/4 pt.
103.43 Ac. *

Vincent N. &
Jo Ann Adams
OR68-270
SW 1/4 pt.
15.80 Ac.

SW 1/4 of the SE 1/4
40 Ac.

SE 1/4 of the SE 1/4
40 Ac.
RD

Paul & Helen Sater
Total Acreage 80.0
220-77

SEC.

11

SEC. 2