

2-29-00

HOCKING COUNTY
LAUREL TWP
T.12 R.18
SEC. 18

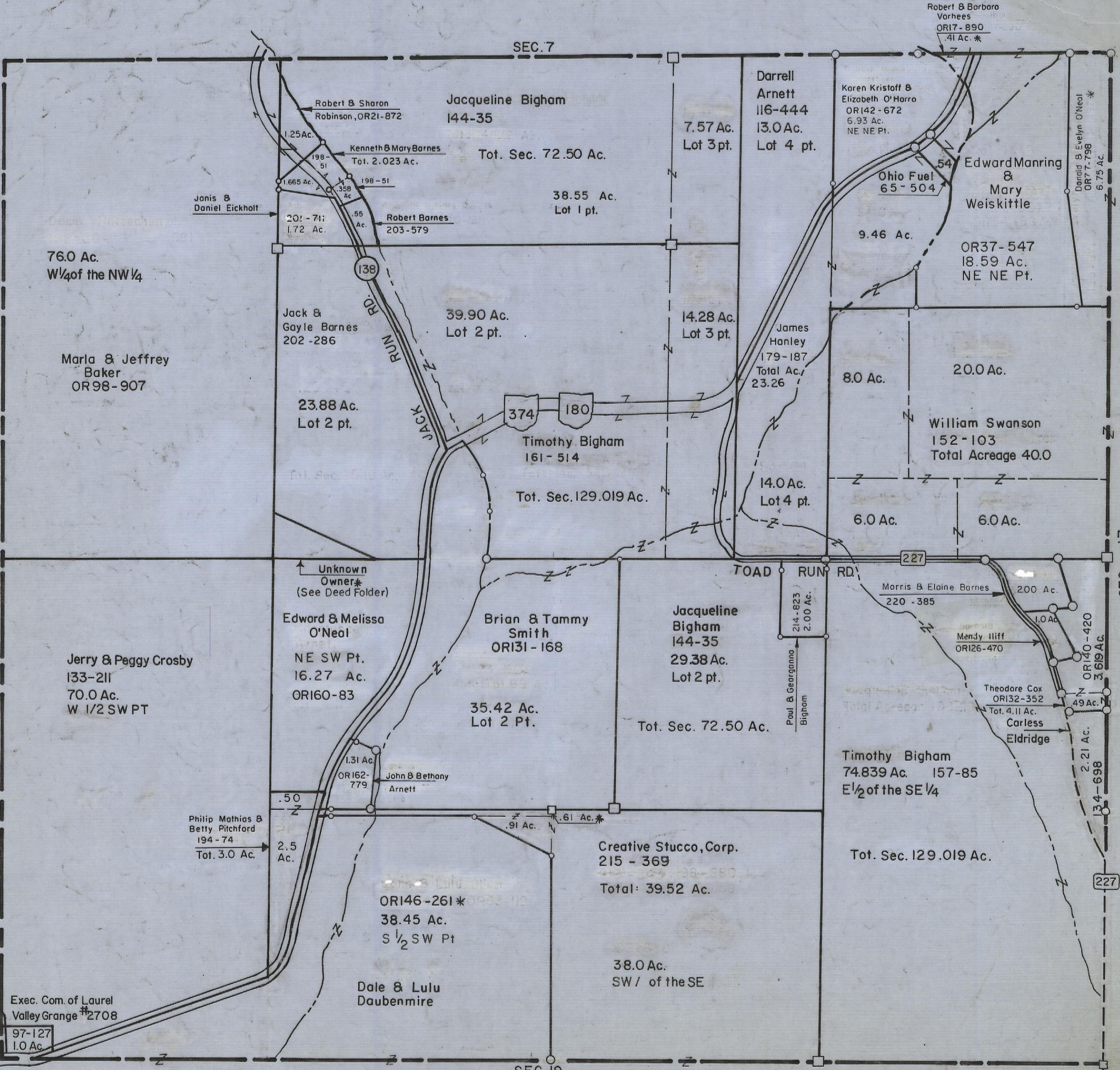
SEC. 7

SEC. 19

SEC. 17

SEC. 18

PERRY TWP. SEC. 13



76.0 Ac.
W 1/4 of the NW 1/4

Marla & Jeffrey
Baker
OR98-907

Jack &
Gayle Barnes
202-286

23.88 Ac.
Lot 2 pt.

Jerry & Peggy Crosby
133-211
70.0 Ac.
W 1/2 SW PT

Unknown
Owner*
(See Deed Folder)

Edward & Melissa
O'Neal
NE SW Pt.
16.27 Ac.
OR160-83

Philip Mathias &
Betty Pitchford
194-74
Tot. 3.0 Ac.

ORI46-261*
38.45 Ac.
S 1/2 SW Pt

Dale & Lulu
Daubemire

Exec. Com. of Laurel
Valley Grange #2708

97-127
1.0 Ac.

Robert & Sharon
Robinson, OR21-872

Jacqueline Bigham
144-35

Tot. Sec. 72.50 Ac.

Kenneth & Mary Barnes
Tot. 2.023 Ac.

Janis &
Daniel Eickholt

201-74;
1.72 Ac.

Robert Barnes
203-579

38.55 Ac.
Lot 1 pt.

Jack &
Gayle Barnes
202-286

39.90 Ac.
Lot 2 pt.

Timothy Bigham
161-514

Tot. Sec. 129.019 Ac.

Brian & Tammy
Smith
OR131-168

35.42 Ac.
Lot 2 Pt.

John & Bethony
Arnett

.61 Ac.*

Creative Stucco, Corp.
215-369

Total: 39.52 Ac.

38.0 Ac.
SW 1/4 of the SE

Darrell
Arnett
116-444
7.57 Ac.
Lot 3 pt.
13.0 Ac.
Lot 4 pt.

Karen Kristoff &
Elizabeth O'Harro
OR142-672
6.93 Ac.
NE NE Pt.

Robert & Barbara
Vorhees
OR17-890
.41 Ac.*

Ohio Fuel
65-504

Edward Manning
&
Mary
Weiskittle

OR37-547
18.59 Ac.
NE NE Pt.

Donald & Evelyn O'Neal
OR77-798
6.75 Ac.*

14.28 Ac.
Lot 3 pt.

James
Hanley
179-187
Total Ac.
23.26

8.0 Ac.

20.0 Ac.

William Swanson
152-103
Total Acreage 40.0

14.0 Ac.
Lot 4 pt.

6.0 Ac.

6.0 Ac.

TOAD RUN RD

Paul & Georganna
Bigham
214-823
2.00 Ac.

Morris & Elaine Barnes
220-385

2.00 Ac.

Mendy Hliff
OR126-470

Theodore Cox
OR132-352
Tot. 4.11 Ac.

Carless
Eldridge

Timothy Bigham
74.839 Ac. 157-85
E 1/2 of the SE 1/4

Tot. Sec. 129.019 Ac.

ORI40-420
3.619 Ac.

49 Ac.

2.21 Ac.

134-698

139

227