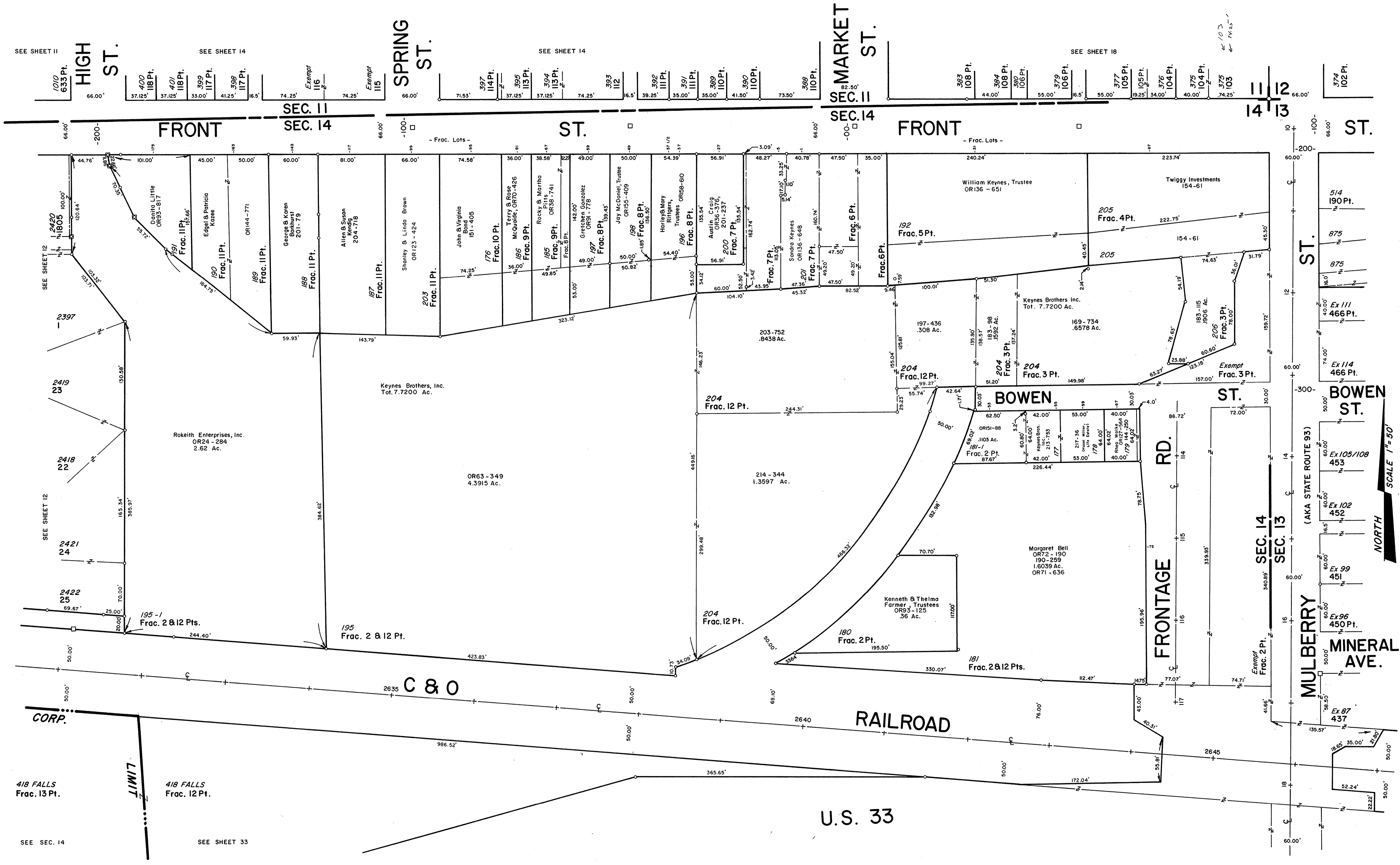


SEE SHEET 11 SEE SHEET 14

SEE SHEET 14

SEE SHEET 18



418 FALLS
Frac. 13 Pt.

418 FALLS
Frac. 12 Pt.

SEE SEC. 14 SEE SHEET 33

BOWEN ST.

MULBERRY ST.
(AKA STATE ROUTE 93)

MINERAL AVE.

514
190 Pt.

875

875

Ex 111
466 Pt.

Ex 114
466 Pt.

Ex 105/108
453

Ex 102
452

Ex 99
451

Ex 96
450 Pt.

Ex 87
437

SCALE 1" = 50'

NORTH