

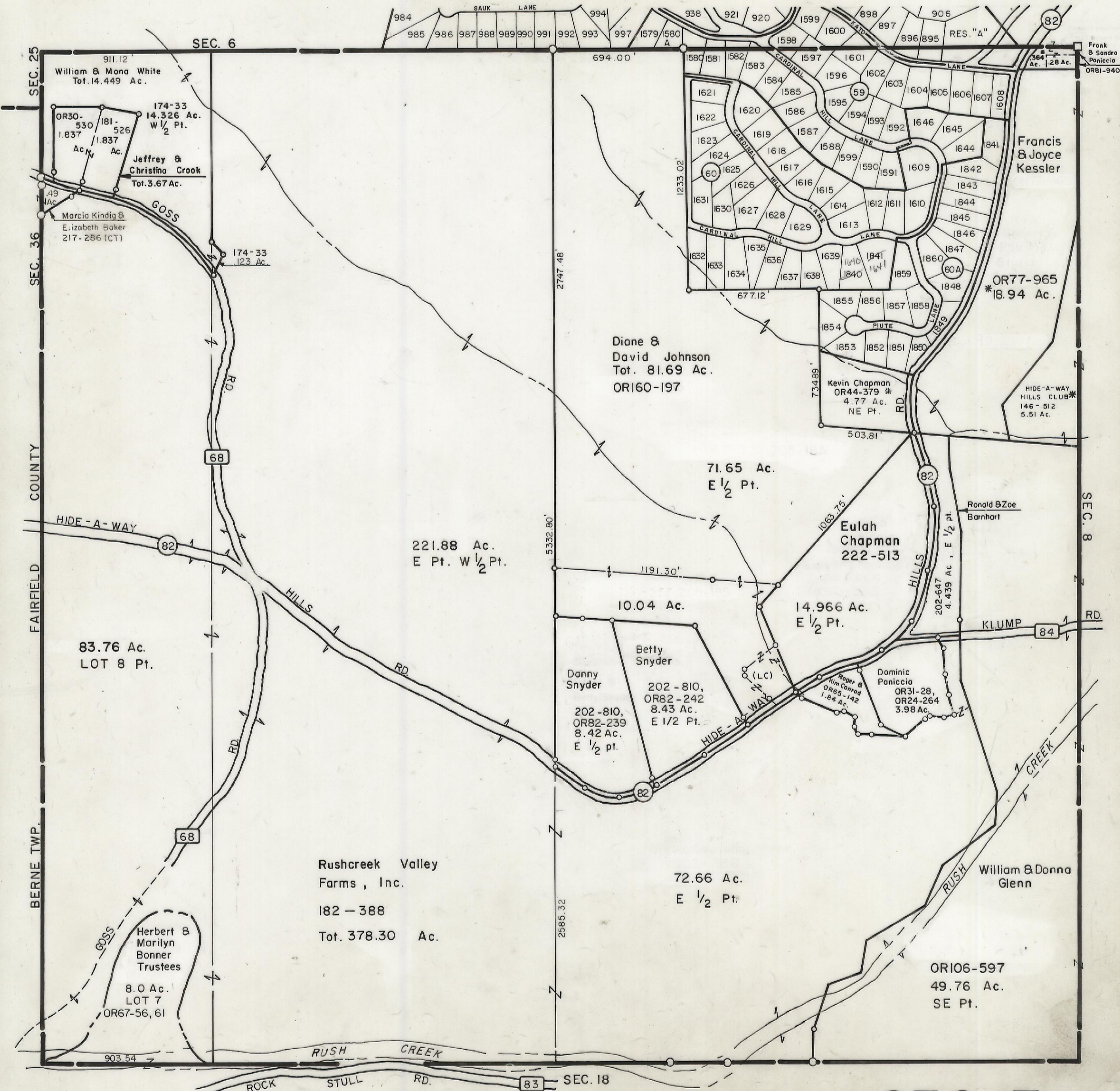
5-12-00

HOCKING COUNTY

MARION TWP.

SEC. 7 T15 R17

Scale 1" = 400'



William & Mona White
Tot. 14.449 Ac.

174-33
14.326 Ac.
W 1/2 Pt.

Jeffrey & Christina Crook
Tot. 3.67 Ac.

Marcia Kindig & Elizabeth Baker
217-286 (CT)

Diane & David Johnson
Tot. 81.69 Ac.
OR160-197

Francis & Joyce Kessler

OR77-965
*18.94 Ac.

Kevin Chapman
OR44-379 *
4.77 Ac.
NE Pt.

HIDE-A-WAY HILLS CLUB*
146-512
5.51 Ac.

221.88 Ac.
E Pt. W 1/2 Pt.

Eulah Chapman
222-513

83.76 Ac.
LOT 8 Pt.

10.04 Ac.

14.966 Ac.
E 1/2 Pt.

Danny Snyder
202-810,
OR82-239
8.42 Ac.
E 1/2 pt.

Betty Snyder
202-810,
OR82-242
8.43 Ac.
E 1/2 Pt.

Roger & Kim Conrad
OR65-142
1.84 Ac.

Dominic Paniccia
OR31-28,
OR24-264
3.98 Ac.

Rushcreek Valley Farms, Inc.
182-388
Tot. 378.30 Ac.

72.66 Ac.
E 1/2 Pt.

William & Donna Glenn

Herbert & Marilyn Bonner Trustees
8.0 Ac.
LOT 7
OR67-56, 61

OR106-597
49.76 Ac.
SE Pt.

SEC. 7