

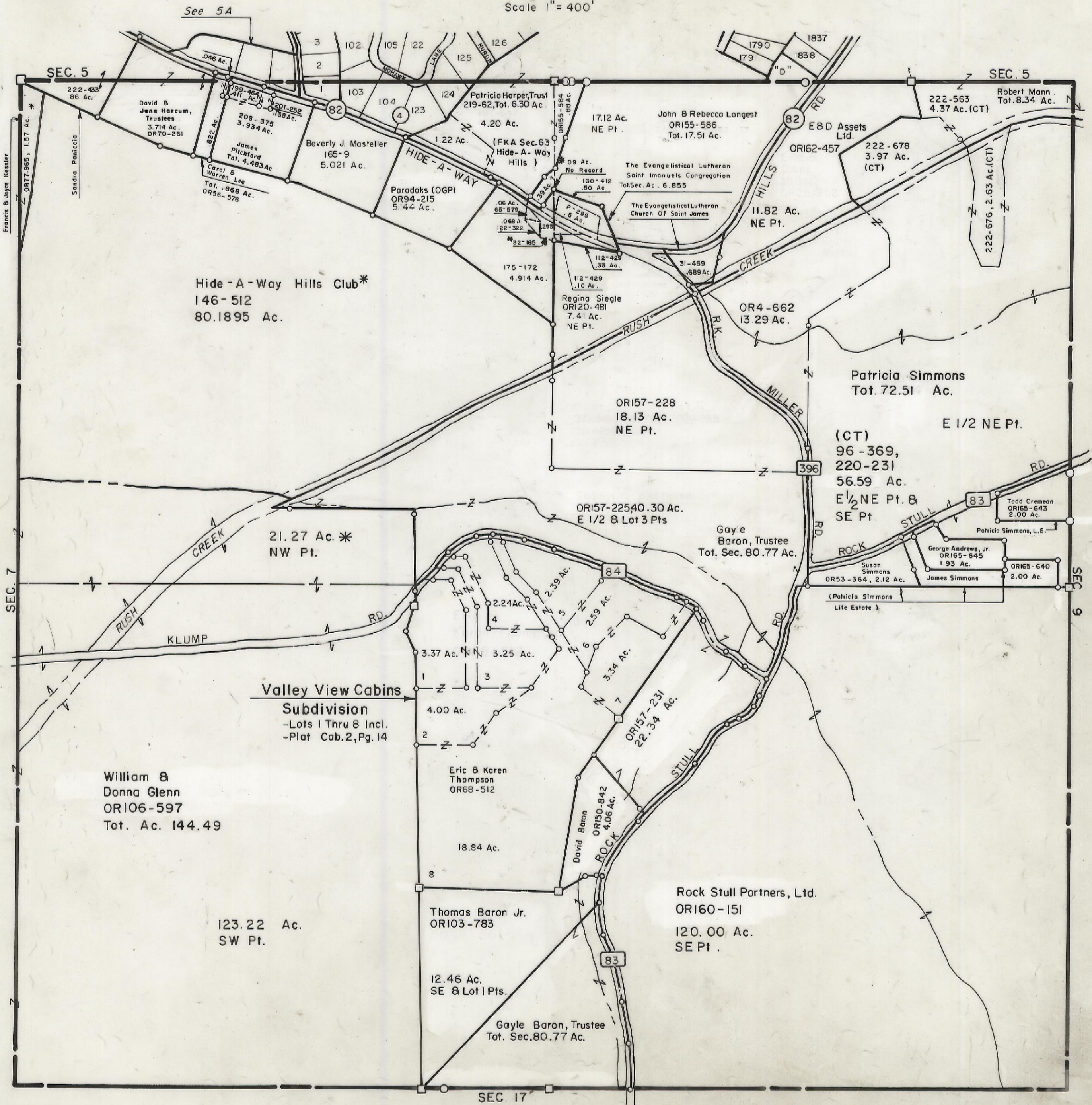
5-12-00

HOCKING COUNTY

MARION TWP.

SEC. 8 T 15 R 17

Scale 1" = 400'



See 5A

SEC. 5

SEC. 5

Francis B. Joyner Kessler

Sandra Panicia

David B. June Harcum, Trustees
3.714 Ac.
OR70-261

James Pritchard
Tot. 4.483 Ac.
OR56-576

Beverly J. Masteller
165-9
5.021 Ac.

Paradoks (OGP)
OR94-215
5.144 Ac.

Patricia Harper, Trust
219-62, Tot. 6.30 Ac.

(FKA Sec. 63
Hide-A-Way Hills)

17.12 Ac.
NE Pt.

John B. Rebecca Longest
OR155-586
Tot. 17.51 Ac.

The Evangelical Lutheran
Saint Imanuels Congregation
Tot. Sec. Ac. 6.855

The Evangelical Lutheran
Church of Saint James

E&D Assets
Ltd.
OR162-457

222-678
3.97 Ac.
(CT)

222-563
4.37 Ac. (CT)

Robert Mann
Tot. 8.34 Ac.

Hide-A-Way Hills Club*
146-512
80.1895 Ac.

OR157-228
18.13 Ac.
NE Pt.

Patricia Simmons
Tot. 72.51 Ac.

E 1/2 NE Pt.

(CT)
96-369,
220-231
56.59 Ac.
E 1/2 NE Pt. &
SE Pt.

21.27 Ac. *
NW Pt.

OR157-22540.30 Ac.
E 1/2 & Lot 3 Pts.

Gayle Baron, Trustee
Tot. Sec. 80.77 Ac.

Todd Cremon
OR165-643
2.00 Ac.

George Andrews, Jr.
OR165-645
1.93 Ac.

OR165-640
2.00 Ac.

Susan Simmons
OR53-364, 2.12 Ac.

(Patricia Simmons
Life Estate)

Valley View Cabins
Subdivision
-Lots 1 Thru 8 Incl.
-Plat Cab. 2, Pg. 14

William &
Donna Glenn
OR106-597
Tot. Ac. 144.49

Eric & Karen
Thompson
OR68-512

18.84 Ac.

Thomas Baron Jr.
OR103-783

123.22 Ac.
SW Pt.

12.46 Ac.
SE & Lot 1 Pts.

Gayle Baron, Trustee
Tot. Sec. 80.77 Ac.

Rock Stull Partners, Ltd.
OR160-151
120.00 Ac.
SE Pt.

SEC. 17

SEC. 8