

5-12-00

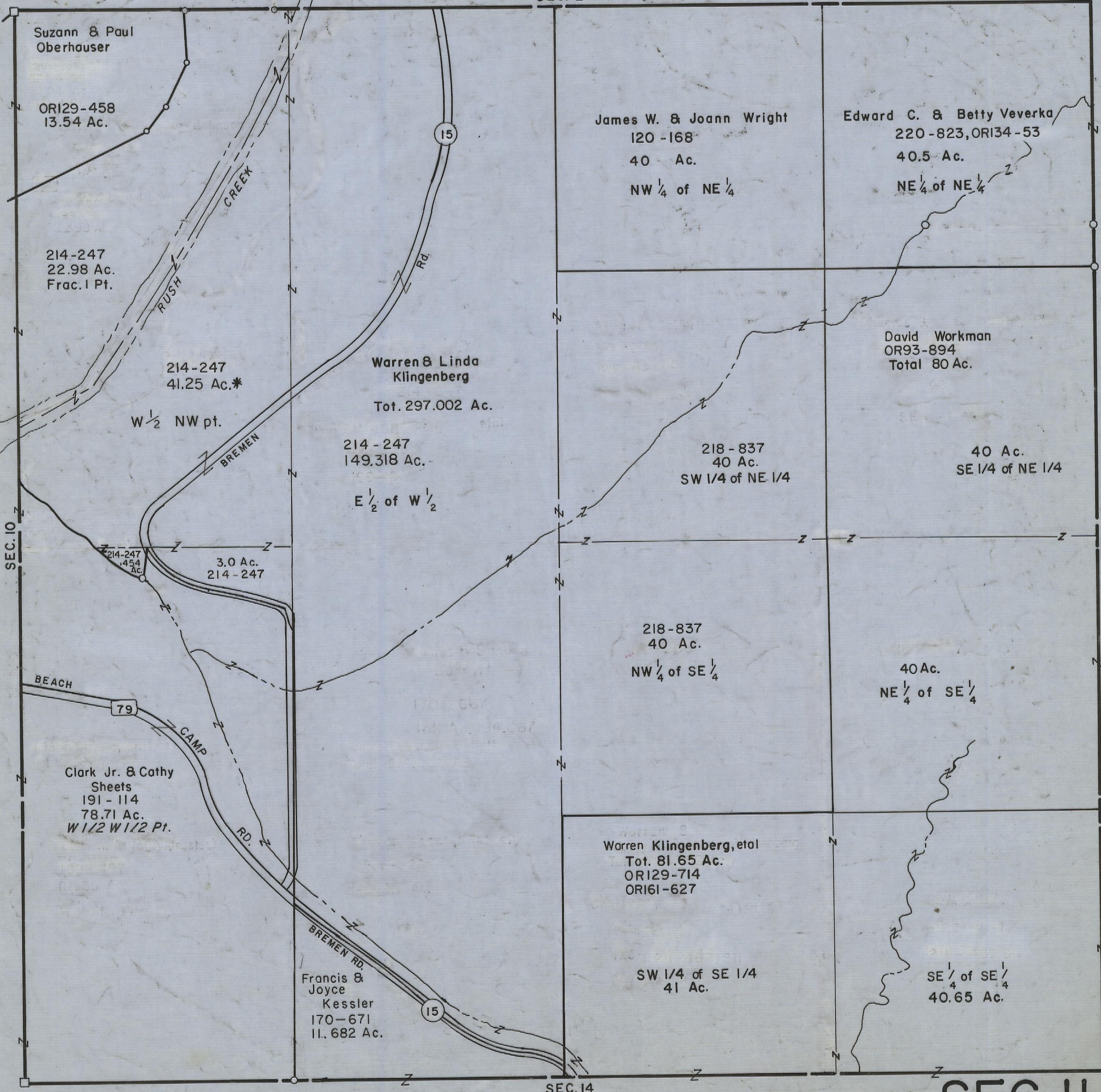
HOCKING COUNTY

SEC. II T. 15 R. 17

MARION TWP.

Scale 1"=400'

SEC. 2



Suzann & Paul Oberhauser

OR129-458
13.54 Ac.

214-247
22.98 Ac.
Frac. 1 Pt.

214-247
41.25 Ac.*

W 1/2 NW pt.

Warren & Linda Klingenberg

Tot. 297.002 Ac.

214-247
149.318 Ac.

E 1/2 of W 1/2

214-247
454 AC

3.0 Ac.
214-247

BEACH

79

Clark Jr. & Cathy Sheets
191-114
78.71 Ac.
W 1/2 W 1/2 Pt.

CAMP

RD.

BREMEN RD.

Francis & Joyce Kessler
170-671
11,682 Ac.

James W. & Joann Wright
120-168
40 Ac.
NW 1/4 of NE 1/4

Edward C. & Betty Veverka
220-823, OR134-53
40.5 Ac.
NE 1/4 of NE 1/4

David Workman
OR93-894
Total 80 Ac.

218-837
40 Ac.
SW 1/4 of NE 1/4

40 Ac.
SE 1/4 of NE 1/4

218-837
40 Ac.
NW 1/4 of SE 1/4

40 Ac.
NE 1/4 of SE 1/4

Warren S
Warren Klingenberg, et al
Tot. 81.65 Ac.
OR129-714
OR161-627

SW 1/4 of SE 1/4
41 Ac.

SE 1/4 of SE 1/4
40.65 Ac.

SEC. 14

SEC II