

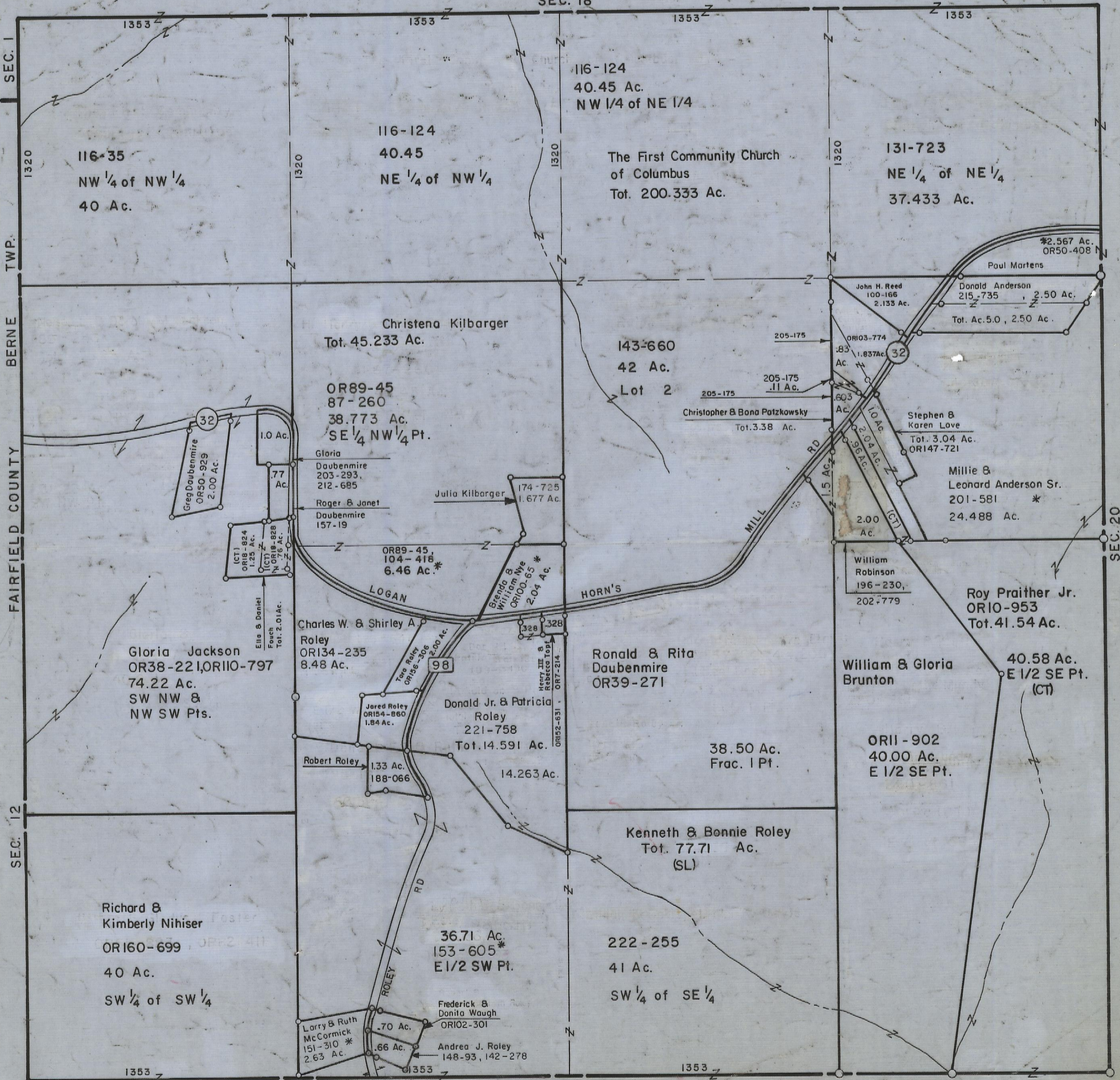
5-12-00
HOCKING COUNTY

SEC. 19 T. 15 R. 17

MARION TWP

Scale 1"=400'

SEC. 18



116-124
40.45 Ac.
NW 1/4 of NE 1/4

116-35
NW 1/4 of NW 1/4
40 Ac.

116-124
40.45
NE 1/4 of NW 1/4

The First Community Church
of Columbus
Tot. 200.333 Ac.

131-723
NE 1/4 of NE 1/4
37.433 Ac.

Christena Kilbarger
Tot. 45.233 Ac.

143-660
42 Ac.
Lot 2

OR89-45
87-260
38.773 Ac.
SE 1/4 NW 1/4 Pt.

John H. Reed
100-166
2.133 Ac.

Donald Anderson
215-735
2.50 Ac.
Tot. Ac. 5.0, 2.50 Ac.

*2.567 Ac.
OR50-408 N
Paul Martens

Christopher & Bona Patzkowsky
Tot. 3.38 Ac.

Stephen &
Karen Love
Tot. 3.04 Ac.
OR147-721

Millie &
Leonard Anderson Sr.
201-581 *
24.488 Ac.

Gloria Jackson
OR38-221, OR110-797
74.22 Ac.
SW NW &
NW SW Pts.

Charles W. & Shirley A.
Roley
OR134-235
8.48 Ac.

Ronald & Rita
Daubenmire
OR39-271

William & Gloria
Brunton

Roy Praither Jr.
OR10-953
Tot. 41.54 Ac.

40.58 Ac.
E 1/2 SE Pt.
(CT)

Richard &
Kimberly Nihiser
OR160-699
40 Ac.
SW 1/4 of SW 1/4

Robert Roley
1.33 Ac.
188-066

Donald Jr. & Patricia
Roley
221-758
Tot. 14.591 Ac.

38.50 Ac.
Frac. 1 Pt.

OR11-902
40.00 Ac.
E 1/2 SE Pt.

Kenneth & Bonnie Roley
Tot. 77.71 Ac.
(SL)

36.71 Ac.
153-605 *
E 1/2 SW Pt.

222-255
41 Ac.
SW 1/4 of SE 1/4

Larry & Ruth
McCormick
151-310 *
2.63 Ac.

Frederick &
Donita Waugh
OR102-301

Andrea J. Roley
148-93, 142-278

SEC. 19