

5-12-00

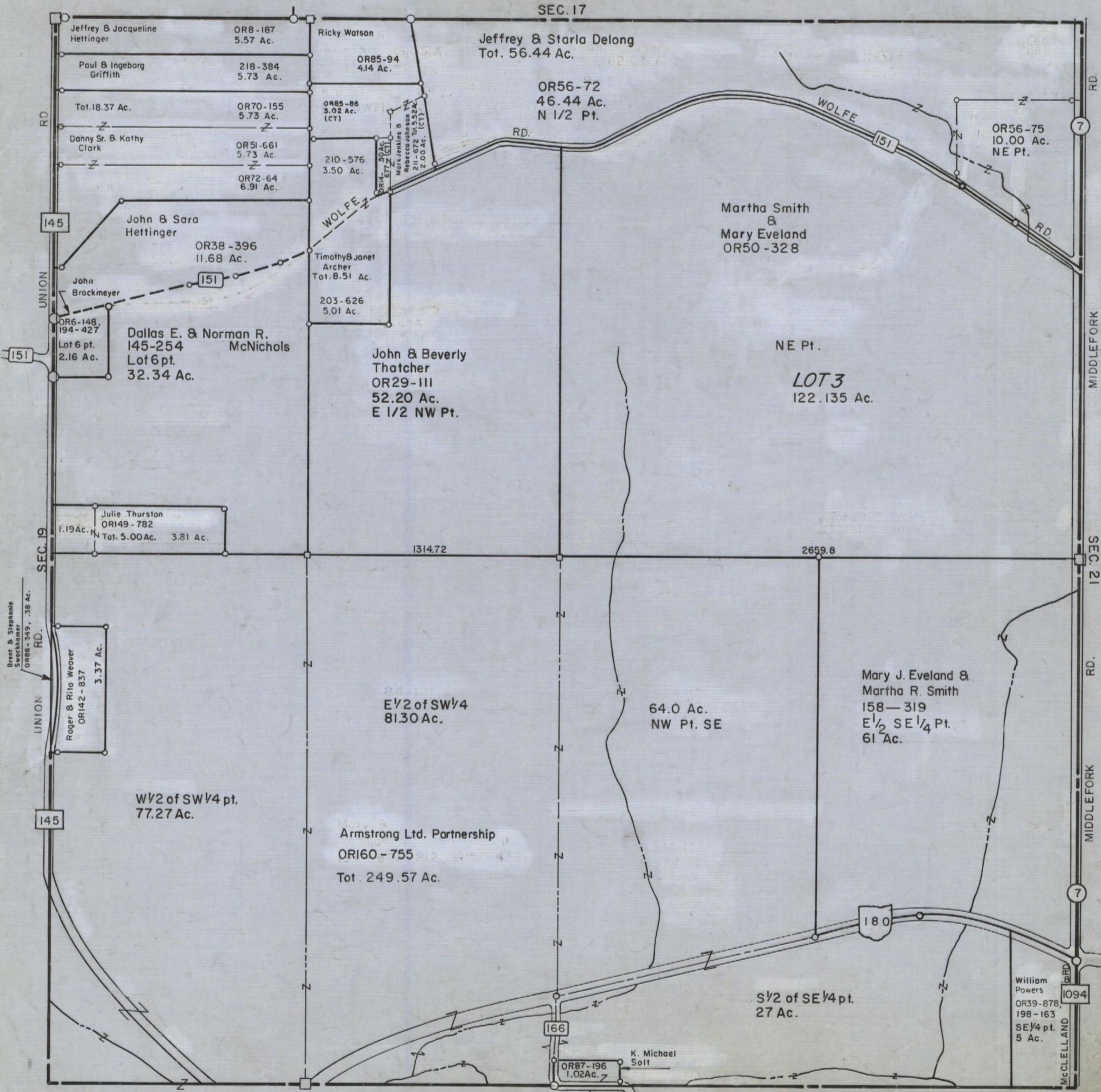
HOCKING COUNTY

Sec. 20 T12 R19

PERRY TWP.

Scale: 1"=400'

SEC. 17



SEC. 29

SEC. 20

Jeffrey & Jacqueline Hettinger OR8-187 5.57 Ac.

Paul & Ingeborg Griffith 218-384 5.73 Ac.

Tot. 18.37 Ac.

Danny Sr. & Kathy Clark OR51-661 5.73 Ac.

OR72-64 6.91 Ac.

John & Sara Hettinger OR38-396 11.68 Ac.

John Brockmeyer

OR6-148, 194-427 Lot 6 pt. 2.16 Ac.

Dallas E. & Norman R. McNichols 145-254 Lot 6 pt. 32.34 Ac.

Julie Thurston OR149-782 1.19 Ac. Tot. 5.00 Ac. 3.81 Ac.

Roger & Rita Weaver OR142-837 3.37 Ac.

W 1/2 of SW 1/4 pt. 77.27 Ac.

Armstrong Ltd. Partnership OR160-755 Tot. 249.57 Ac.

Jeffrey & Starla Delong Tot. 56.44 Ac.

OR85-94 4.14 Ac.

OR56-72 46.44 Ac. N 1/2 Pt.

OR85-86 3.02 Ac. (CT)

210-576 3.50 Ac.

OR74-50 Ac. Mark Jenkins & Rebecca Johnson 211-672 10.32 Ac. 2.00 Ac. (CT)

Timothy & Janet Archer Tot. 8.51 Ac.

203-626 5.01 Ac.

John & Beverly Thatcher OR29-111 52.20 Ac. E 1/2 NW Pt.

Martha Smith & Mary Eveland OR50-328

NE Pt. LOT 3 122.135 Ac.

E 1/2 of SW 1/4 81.30 Ac.

64.0 Ac. NW Pt. SE

Mary J. Eveland & Martha R. Smith 158-319 E 1/2 SE 1/4 Pt. 61 Ac.

S 1/2 of SE 1/4 pt. 27 Ac.

K. Michael Soll OR87-196 1.02 Ac.

William Powers OR39-878 198-163 SE 1/4 pt. 5 Ac.