

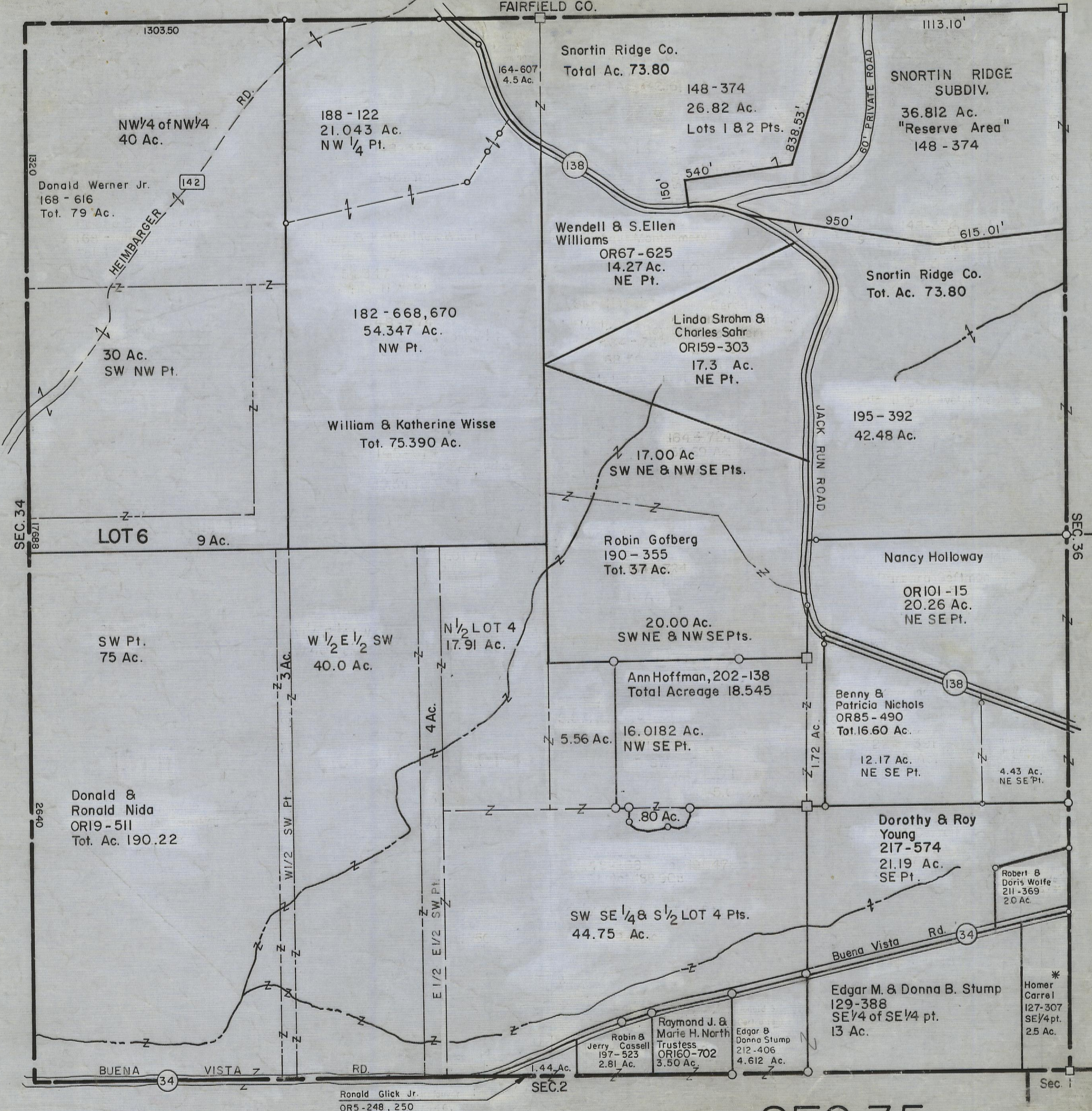
5-12-00

HOCKING COUNTY

Sec. 35 T13 R19 (TOP TIER)

PERRY TWP.

Scale: 1"=400'
FAIRFIELD CO.



NW 1/4 of NW 1/4
40 Ac.

Donald Werner Jr.
168 - 616
Tot. 79 Ac.

188 - 122
21.043 Ac.
NW 1/4 Pt.

Snortin Ridge Co.
Total Ac. 73.80

148 - 374
26.82 Ac.
Lots 1 & 2 Pts.

SNORTIN RIDGE
SUBDIV.
36.812 Ac.
"Reserve Area"
148 - 374

Wendell & S. Ellen
Williams
OR67 - 625
14.27 Ac.
NE Pt.

Snortin Ridge Co.
Tot. Ac. 73.80

182 - 668,670
54.347 Ac.
NW Pt.

Linda Strohm &
Charles Sahr
OR159-303
17.3 Ac.
NE Pt.

195 - 392
42.48 Ac.

William & Katherine Wisse
Tot. 75.390 Ac.

17.00 Ac
SW NE & NW SE Pts.

Robin Gofberg
190 - 355
Tot. 37 Ac.

Nancy Holloway

OR101 - 15
20.26 Ac.
NE SE Pt.

LOT 6
9 Ac.

SW Pt.
75 Ac.

W 1/2 E 1/2 SW
40.0 Ac.

N 1/2 LOT 4
17.91 Ac.

20.00 Ac.
SW NE & NW SE Pts.

Ann Hoffman, 202 - 138
Total Acreage 18.545

Benny &
Patricia Nichols
OR85 - 490
Tot. 16.60 Ac.

5.56 Ac.
16.0182 Ac.
NW SE Pt.

12.17 Ac.
NE SE Pt.

4.43 Ac.
NE SE Pt.

Donald &
Ronald Nida
OR19 - 511
Tot. Ac. 190.22

SW SE 1/4 & S 1/2 LOT 4 Pts.
44.75 Ac.

Dorothy & Roy
Young
217 - 574
21.19 Ac.
SE Pt.

Robert &
Doris Wolfe
211 - 369
2.0 Ac.

Robin &
Jerry Cassell
197 - 523
2.81 Ac.

Raymond J. &
Marie H. North
Trustess
OR160 - 702
3.50 Ac.

Edgar &
Donna Stump
212 - 406
4.612 Ac.

Edgar M. & Donna B. Stump
129 - 388
SE 1/4 of SE 1/4 pt.
13 Ac.

*
Homer
Carrel
127 - 307
SE 1/4 pt.
2.5 Ac.

Ronald Glick Jr.
OR5 - 248, 250

SEC. 35

(TOP TIER)