

HOCKING COUNTY

Sec. 36 T13 R19

PERRY TWP.

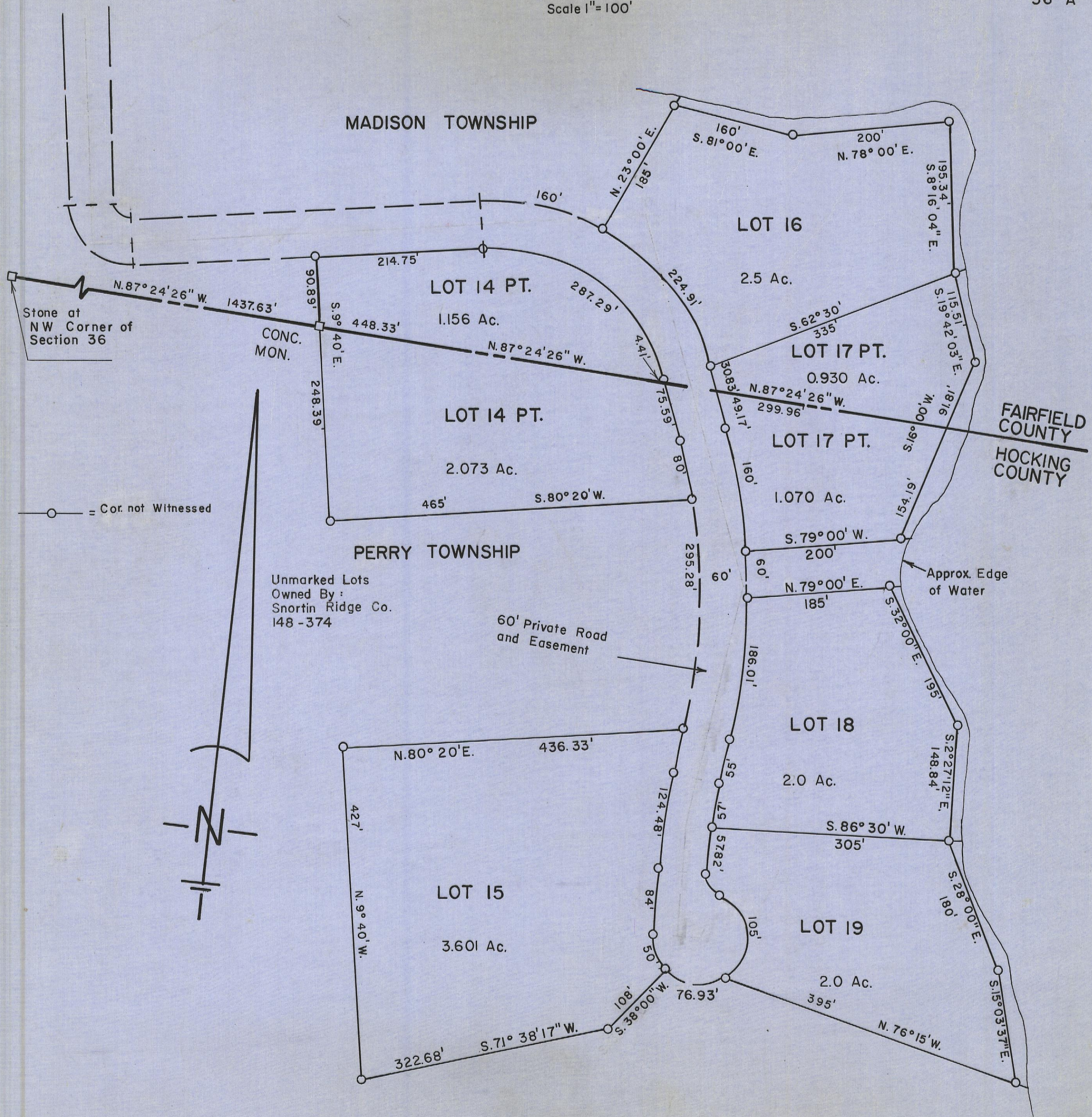
Scale 1"=100'

5-12-00

MADISON TOWNSHIP

PERRY TOWNSHIP

FAIRFIELD COUNTY
HOCKING COUNTY



Stone at NW Corner of Section 36

CONC. MON.

○ = Cor. not Witnessed

Unmarked Lots
Owned By:
Snortin Ridge Co.
148-374

60' Private Road and Easement

Approx. Edge of Water

