

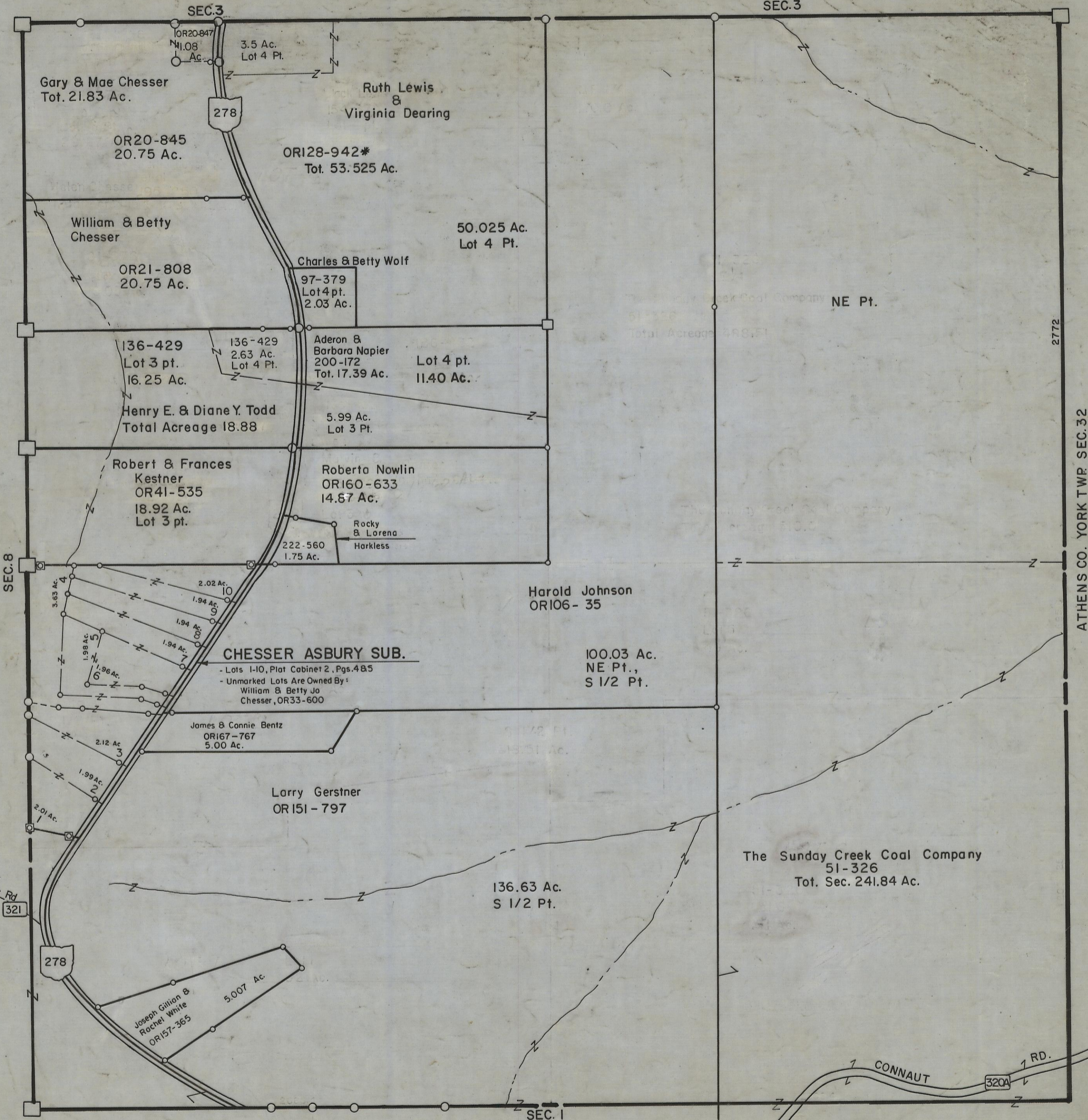
5-12-00

# HOCKING COUNTY

Sec. 2 T 12 R 16

STARR TWP.

Scale: 1" = 400'



Gary & Mae Chesser  
Tot. 21.83 Ac.

OR20-845  
20.75 Ac.

William & Betty  
Chesser

OR21-808  
20.75 Ac.

136-429  
Lot 3 pt.  
16.25 Ac.

Henry E. & Diane Y. Todd  
Total Acreage 18.88

Robert & Frances  
Kestner  
OR41-535  
18.92 Ac.  
Lot 3 pt.

James & Connie Bentz  
OR167-767  
5.00 Ac.

Larry Gerstner  
OR151-797

Joseph Gillian &  
Rachel White  
OR157-365  
5.007 Ac.

### CHESSEY ASBURY SUB.

- Lots 1-10, Plat Cabinet 2, Pgs. 4 & 5  
- Unmarked Lots Are Owned By:  
William & Betty Jo  
Chesser, OR33-600

OR128-942\*  
Tot. 53.525 Ac.

Charles & Betty Wolf  
97-379  
Lot 4 pt.  
2.03 Ac.

Aderon &  
Barbara Napier  
200-172  
Tot. 17.39 Ac.

Roberta Nowlin  
OR160-633  
14.67 Ac.

Rocky & Lorena  
Harkless  
222-560  
1.75 Ac.

Harold Johnson  
OR106-35

100.03 Ac.  
NE Pt.,  
S 1/2 Pt.

136.63 Ac.  
S 1/2 Pt.

Ruth Lewis  
&  
Virginia Dearing  
3.5 Ac.  
Lot 4 Pt.

50.025 Ac.  
Lot 4 Pt.

Lot 4 pt.  
11.40 Ac.

SEC. 3

NE Pt.

2772

ATHENS CO. YORK TWP SEC. 32

The Sunday Creek Coal Company  
51-326  
Tot. Sec. 241.84 Ac.

# SEC. 2