

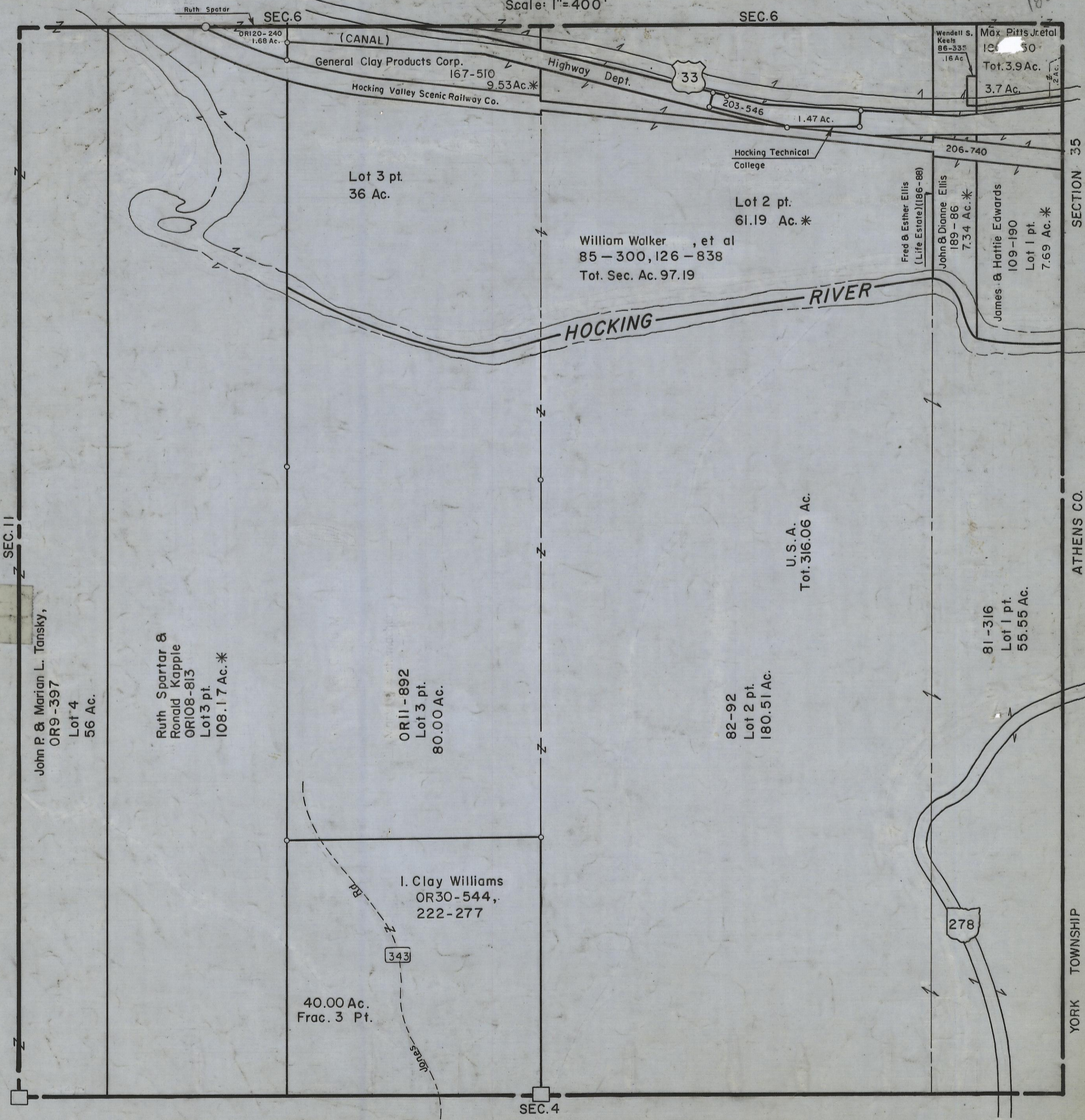
HOCKING COUNTY

Sec. 5 T 12 R 16

STARR WP.

Scale: 1"=400'

186-550



SEC. 11

SEC. 6

SEC. 6

SECTION 35

ATHENS CO.

YORK TOWNSHIP

SEC. 5

John R. & Marian L. Tansky,  
OR9-397  
Lot 4  
56 Ac.

Ruth Spatar &  
Ronald Kapple  
OR108-813  
Lot 3 pt.  
108.17 Ac.\*

OR11-892  
Lot 3 pt.  
80.00 Ac.

I. Clay Williams  
OR30-544,  
222-277

40.00 Ac.  
Frac. 3 Pt.

82-92  
Lot 2 pt.  
180.51 Ac.

U.S.A.  
Tot. 316.06 Ac.

81-316  
Lot 1 pt.  
55.55 Ac.

Lot 3 pt.  
36 Ac.

William Walker, et al  
85-300, 126-838  
Tot. Sec. Ac. 97.19

Lot 2 pt.  
61.19 Ac.\*

Fred & Esther Ellis  
(Life Estate) (186-88)

John & Dianne Ellis  
189-86  
7.34 Ac.\*

James & Hattie Edwards  
109-190  
Lot 1 pt.  
7.69 Ac.\*

Wendell S. Keels  
86-335  
.16 Ac.

Max Pitts Jretal  
100-50  
Tot. 3.9 Ac.  
3.7 Ac.  
.2 Ac.

OR120-240  
1.68 Ac.

(CANAL)  
General Clay Products Corp.  
167-510  
9.53 Ac.\*  
Hocking Valley Scenic Railway Co.

203-546  
1.47 Ac.

Hocking Technical College

206-740

33

278