

HOCKING COUNTY

STARR TWP.

SEC. 12 T 12 R 16

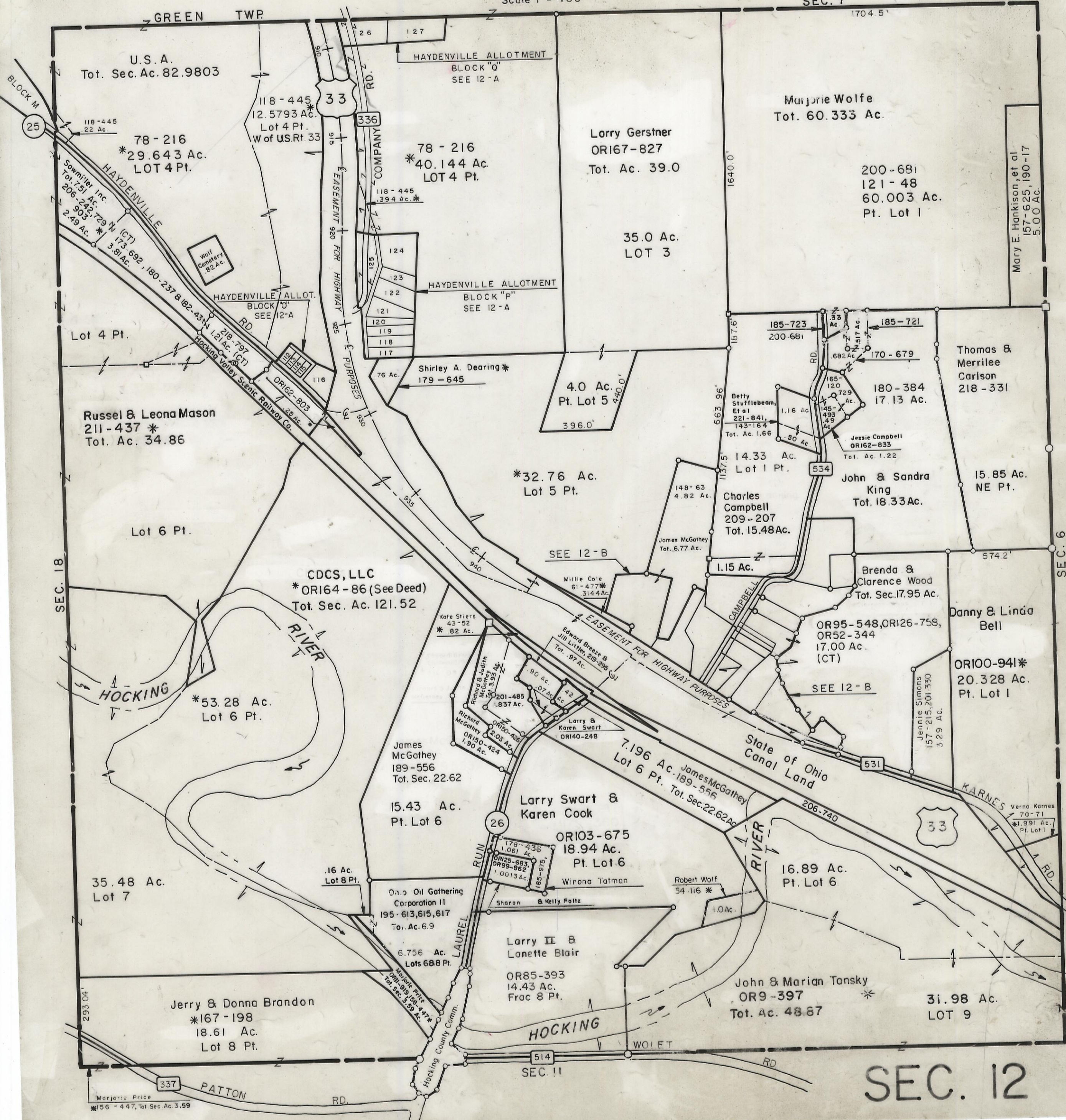
Scale 1" = 400'

5-12-80

GREEN TWP

SEC. 7

1704.5'



U.S.A.
Tot. Sec. Ac. 82.9803

HAYDENVILLE ALLOTMENT
BLOCK "Q"
SEE 12-A

Marjorie Wolfe
Tot. 60.333 Ac.

Larry Gerstner
OR167-827
Tot. Ac. 39.0

78-216
*40.144 Ac.
LOT 4 Pt.

200-681
121-48
60.003 Ac.
Pt. Lot 1

35.0 Ac.
LOT 3

HAYDENVILLE ALLOTMENT
BLOCK "P"
SEE 12-A

Mary E. Hankison, et al
157-625, 190-17
5.00 Ac.

Russel & Leona Mason
211-437 *
Tot. Ac. 34.86

Shirley A. Dearing *
179-645

4.0 Ac.
Pt. Lot 5
396.0'

Thomas & Merrilee
Carlson
218-331

Betty Stufflebeam,
Et al
221-841,
143-164
Tot. Ac. 1.66

Jessie Campbell
OR162-833
Tot. Ac. 1.22

John & Sandra
King
Tot. 18.33 Ac.

15.85 Ac.
NE Pt.

*32.76 Ac.
Lot 5 Pt.

Charles
Campbell
209-207
Tot. 15.48 Ac.

Brenda &
Clarence Wood
Tot. Sec. 17.95 Ac.

Danny & Linda
Bell

CDCS, LLC
*OR164-86 (See Deed)
Tot. Sec. Ac. 121.52

SEE 12-B

Millie Cole
61-477 *
314.4 Ac.

OR95-548, OR126-758,
OR52-344
17.00 Ac.
(CT)

OR100-941 *
20.328 Ac.
Pt. Lot 1

*53.28 Ac.
Lot 6 Pt.

Kate Stiers
43-52
*82 Ac.

Edward Breeze &
Jill Litterer, 219-295
Tot. .97 Ac.

SEE 12-B

Richard B. & Judith
McGathney
201-485
1.837 Ac.

Larry &
Karen Swart
OR140-248

James
McGathney
189-556
Tot. Sec. 22.62

Larry Swart &
Karen Cook
7.196 Ac. 189-556
Tot. Sec. 22.62 Ac.

State of Ohio
Canal Land

Jennie Simons
157-215, 201-330
3.29 Ac.

Verna Karnes
70-71
*1.991 Ac.
Pt. Lot 1

35.48 Ac.
Lot 7

15.43 Ac.
Pt. Lot 6

OR103-675
18.94 Ac.
Pt. Lot 6

16.89 Ac.
Pt. Lot 6

Ohio Oil Gathering
Corporation II
195-613, 615, 617
Tot. Ac. 6.9

Larry II &
Lanette Blair
OR85-393
14.43 Ac.
Frac 8 Pt.

John & Marian Tansky
OR9-397 *
Tot. Ac. 48.87

31.98 Ac.
LOT 9

Jerry & Donna Brandon
*167-198
18.61 Ac.
Lot 8 Pt.

SEC. 11

SEC. 12

Marjorie Price
*156-447, Tot. Sec. Ac. 3.59