

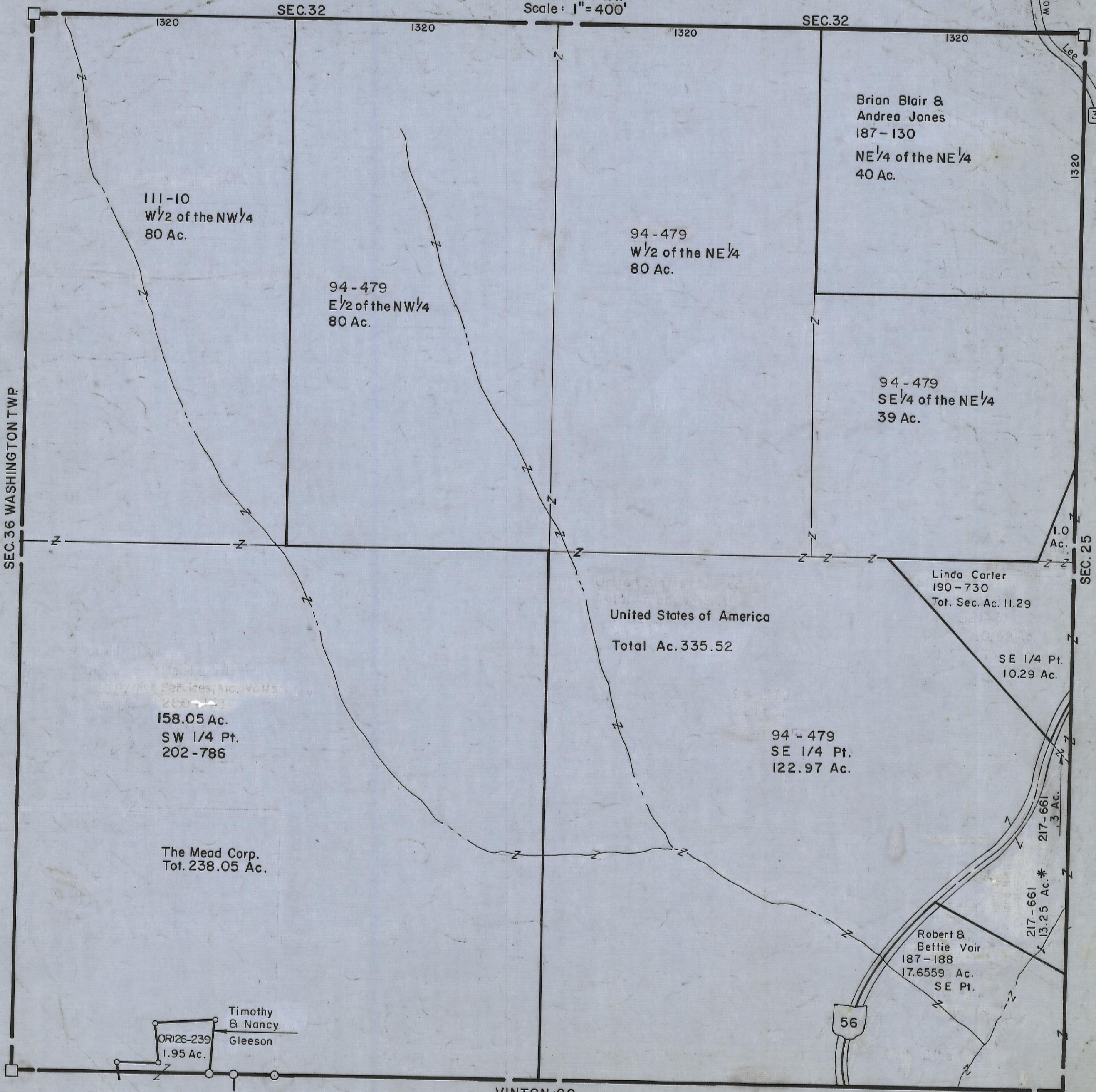
5-12-00

# HOCKING COUNTY

Sec. 31 T 12 R 16

STARR TWP.

Scale: 1" = 400'



158.05 Ac.  
SW 1/4 Pt.  
202-786

The Mead Corp.  
Tot. 238.05 Ac.

OR126-239  
1.95 Ac.

Timothy  
& Nancy  
Gleeson

## SEC. 31