

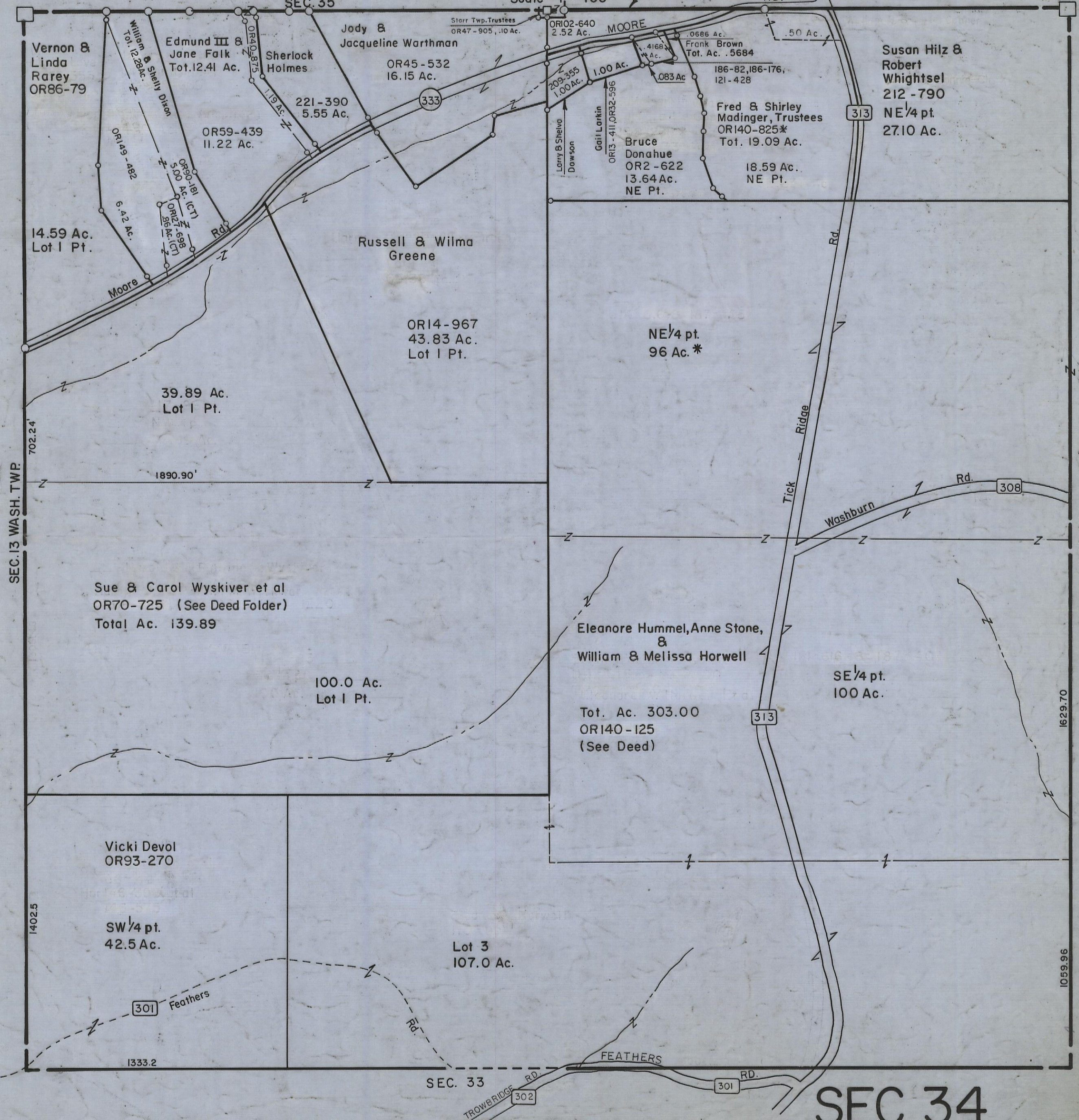
5-12-00

HOCKING COUNTY

Sec. 34 T 12 R 16

STARR TWP.

Scale: 1" = 400'



SEC. 13 WASH. TWP.

SEC. 28

SEC. 33

SEC. 34

Vernon & Linda Rarey
OR86-79

William & Shelly Dion
Tot. 12.28 Ac.

Edmund III & Jane Falk
Tot. 12.41 Ac.

Sherlock Holmes

Jody & Jacqueline Warthman
OR45-532
16.15 Ac.

221-390
5.55 Ac.

OR59-439
11.22 Ac.

14.59 Ac.
Lot 1 Pt.

39.89 Ac.
Lot 1 Pt.

Sue & Carol Wyskiver et al
OR70-725 (See Deed Folder)
Total Ac. 139.89

100.0 Ac.
Lot 1 Pt.

Vicki Devol
OR93-270

SW 1/4 pt.
42.5 Ac.

Lot 3
107.0 Ac.

Eleanore Hummel, Anne Stone,
&
William & Melissa Horwell

Tot. Ac. 303.00
OR140-125
(See Deed)

SE 1/4 pt.
100 Ac.

OR102-640
2.52 Ac.

209-355
1.00 Ac.

1.00 Ac.

1.00 Ac.

1.00 Ac.

1.00 Ac.

1.00 Ac.

1.00 Ac.

1.00 Ac.

1.00 Ac.

1.00 Ac.

1.00 Ac.

1.00 Ac.

1.00 Ac.

1.00 Ac.

1.00 Ac.

1.00 Ac.

1.00 Ac.

1.00 Ac.

1.00 Ac.

1.00 Ac.

1.00 Ac.

1.00 Ac.

1.00 Ac.

1.00 Ac.

1.00 Ac.

1.00 Ac.

1.00 Ac.

1.00 Ac.

1.00 Ac.

MOORE

MOORE

MOORE

MOORE

MOORE

MOORE

MOORE

MOORE

MOORE

MOORE

MOORE

MOORE

MOORE

MOORE

MOORE

MOORE

MOORE

MOORE

MOORE

MOORE

MOORE

MOORE

MOORE

MOORE

MOORE

MOORE

MOORE

MOORE

MOORE

MOORE

Susan Hiltz & Robert Whightsel
212-790
NE 1/4 pt.
27.10 Ac.

186-82, 186-176,
121-428

Fred & Shirley Madinger, Trustees
OR140-825*
Tot. 19.09 Ac.

18.59 Ac.
NE Pt.

Bruce Donahue
OR2-622
13.64 Ac.
NE Pt.

Larry B. Shelva
Dawson

Gail Larkin
OR13-411, OR32-596

Starr Twp. Trustees
OR47-905, .10 Ac.

Larry Dawson

RD.

333

.50 Ac.

313

Rd.

Tick Ridge Rd.

Washburn Rd.

308

301

Feathers

1333.2

302

TROWBRIDGE RD.

301

RD.

1629.70

1059.96

702.24'

1890.90'

1402.5