

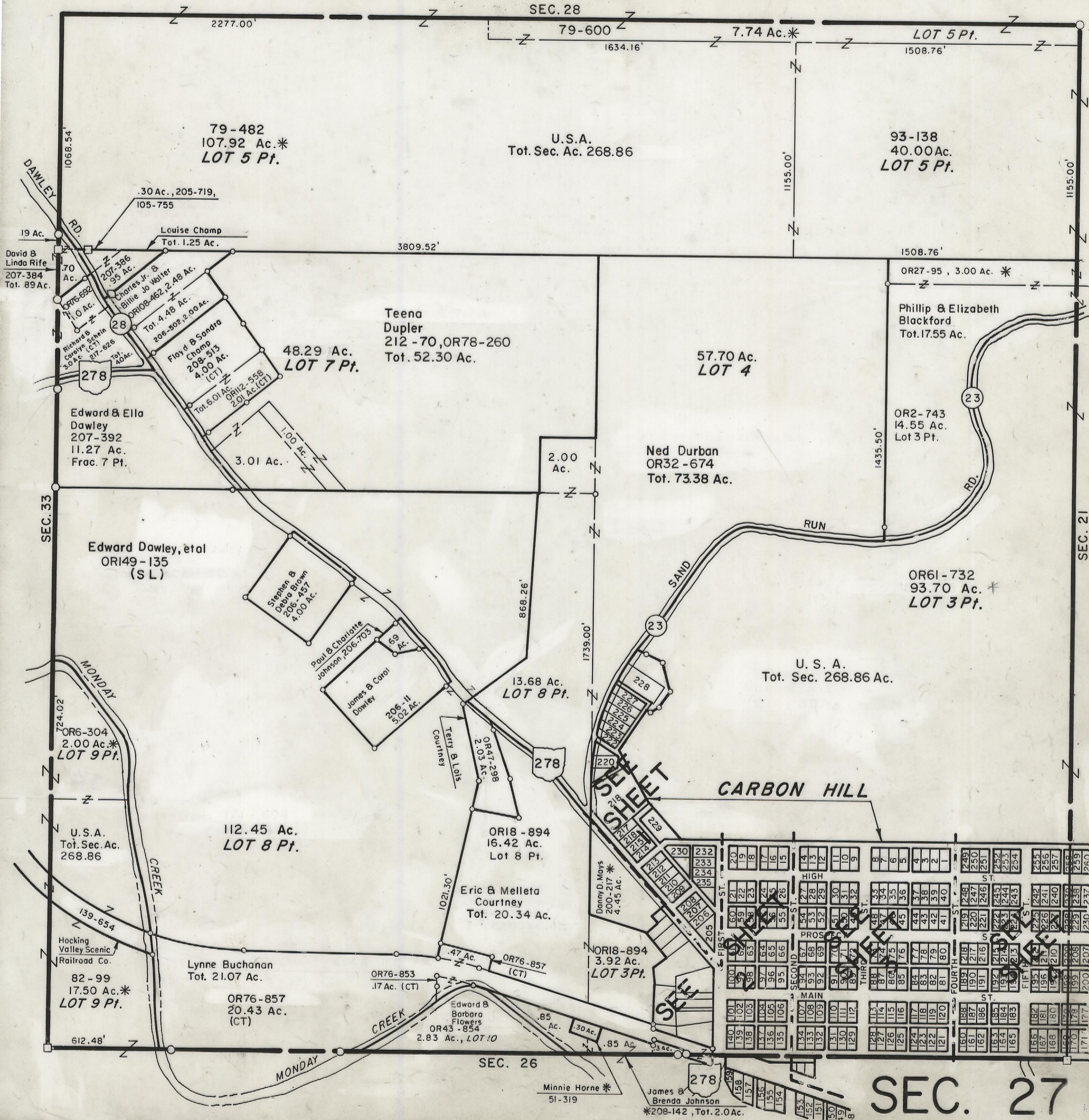
5-12-00

# HOCKING COUNTY

WARD TWP.

SEC. 27 T13 R15

Scale 1"=400'



79-482  
107.92 Ac.\*  
LOT 5 Pt.

U.S.A.  
Tot. Sec. Ac. 268.86

93-138  
40.00 Ac.  
LOT 5 Pt.

David & Linda Rife  
207-384  
Tot. 89 Ac.

.30 Ac., 205-719,  
105-755

Louise Champ  
Tot. 1.25 Ac.

3809.52'

Charles Jr. & Billie Jo Walter  
OR108-462, 2.48 Ac.  
Tot. 4.48 Ac.

Floyd & Sandra Champ  
208-513  
4.00 Ac. (CT)  
Tot. 6.01 Ac. OR112-558  
2.01 Ac. (CT)

48.29 Ac.  
LOT 7 Pt.

Teena Dupler  
212-70, OR78-260  
Tot. 52.30 Ac.

57.70 Ac.  
LOT 4

Phillip & Elizabeth Blackford  
Tot. 17.55 Ac.

OR2-743  
14.55 Ac.  
Lot 3 Pt.

Edward & Ella Dawley  
207-392  
11.27 Ac.  
Frac. 7 Pt.

Ned Durban  
OR32-674  
Tot. 73.38 Ac.

Edward Dawley, et al  
ORI49-135  
(SL)

Stephen & Debra Brown  
206-457  
4.00 Ac.

Paul & Charlotte Johnson  
206-703  
69 Ac.

James & Carol Dowley  
206-11  
5.02 Ac.

13.68 Ac.  
LOT 8 Pt.

Terry & Lois Courtney  
OR47-298  
2.03 Ac.

OR18-894  
16.42 Ac.  
Lot 8 Pt.

Eric & Mellea Courtney  
Tot. 20.34 Ac.

OR6-304  
2.00 Ac.\*  
LOT 9 Pt.

U.S.A.  
Tot. Sec. Ac. 268.86

112.45 Ac.  
LOT 8 Pt.

82-99  
17.50 Ac.\*  
LOT 9 Pt.

Lynne Buchanan  
Tot. 21.07 Ac.

OR76-857  
20.43 Ac. (CT)

OR76-853  
.17 Ac. (CT)

.47 Ac.

OR76-857 (CT)

Edward & Barbara Flowers  
OR43-854  
2.83 Ac., LOT 10

OR18-894  
3.92 Ac.  
LOT 3 Pt.

Minnie Horne \*  
51-319

James & Brenda Johnson  
\*208-142, Tot. 2.0 Ac.

# SEC. 27