

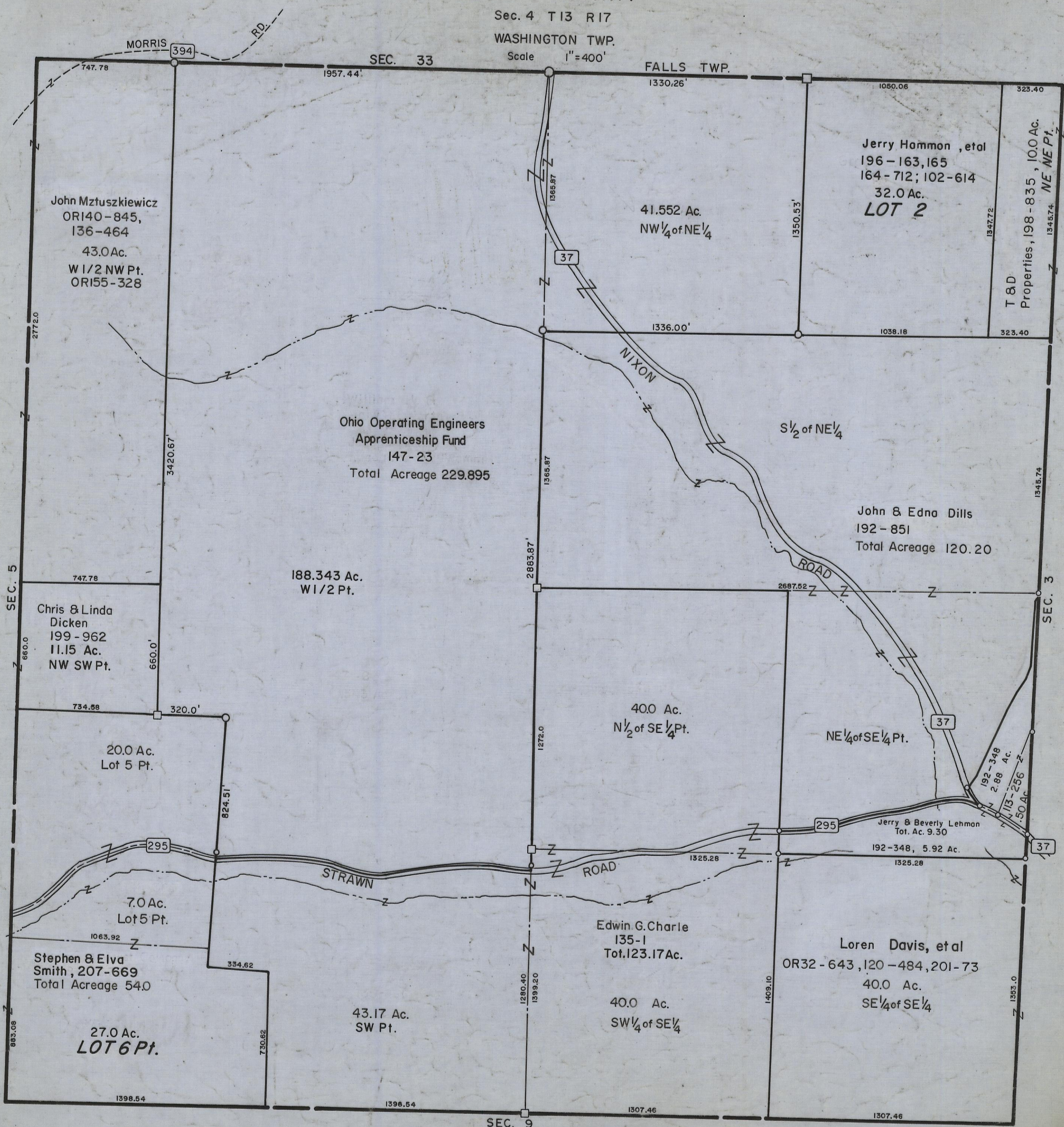
4-5-00

HOCKING COUNTY

Sec. 4 T13 R17

WASHINGTON TWP.

Scale 1"=400'



SEC. 5

SEC. 33

FALLS TWP.

SEC. 3

SEC. 9

SEC. 4

John Mztuskiewicz
 ORI40-845,
 136-464
 43.0 Ac.
 W 1/2 NW Pt.
 ORI55-328

41.552 Ac.
 NW 1/4 of NE 1/4

Jerry Hammon, etal
 196-163,165
 164-712; 102-614
 32.0 Ac.
LOT 2

Ohio Operating Engineers
 Apprenticeship Fund
 147-23
 Total Acreage 229.895

John & Edna Dills
 192-851
 Total Acreage 120.20

188.343 Ac.
 W 1/2 Pt.

Chris & Linda
 Dicken
 199-962
 11.15 Ac.
 NW SW Pt.

40.0 Ac.
 N 1/2 of SE 1/4 Pt.

NE 1/4 of SE 1/4 Pt.

20.0 Ac.
 Lot 5 Pt.

Jerry & Beverly Lehman
 Tot. Ac. 9.30
 192-348, 5.92 Ac.

7.0 Ac.
 Lot 5 Pt.

Edwin G. Charle
 135-1
 Tot. 123.17 Ac.

Loren Davis, etal
 OR32-643, 120-484, 201-73
 40.0 Ac.
 SE 1/4 of SE 1/4

Stephen & Elva
 Smith, 207-669
 Total Acreage 54.0

43.17 Ac.
 SW Pt.

27.0 Ac.
LOT 6 Pt.

40.0 Ac.
 SW 1/4 of SE 1/4