

4-5-00

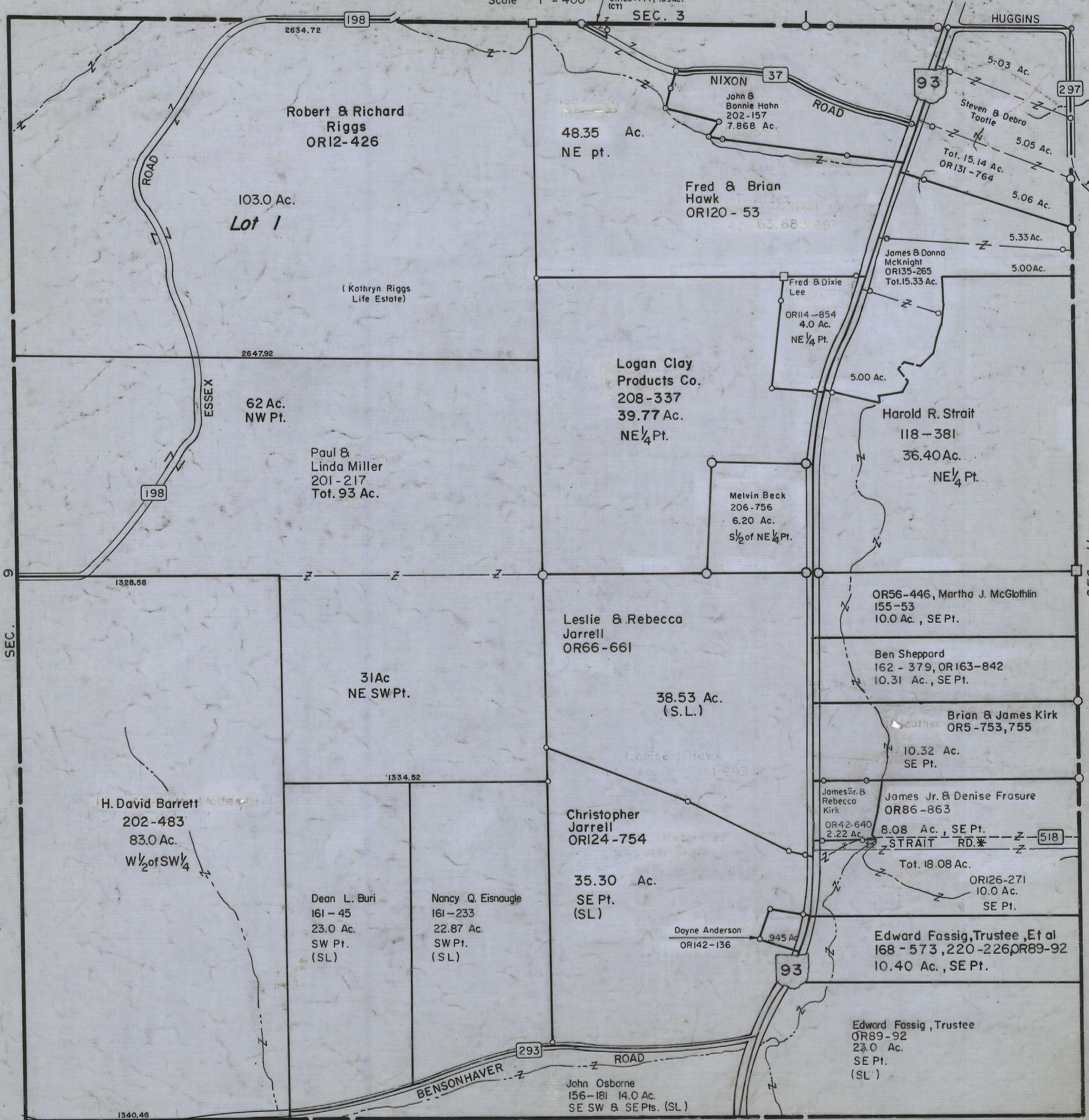
HOCKING COUNTY

Sec. 10 T13 R17

WASHINGTON TWP.

Scale 1" = 400'

Jacob & Ruth W. Hahn
OR123-777, .09 Ac.
(CT)



Robert & Richard Riggs
OR12-426

103.0 Ac.
Lot 1

(Kathryn Riggs
Life Estate)

62 Ac.
NW Pt.

Paul &
Linda Miller
201-217
Tot. 93 Ac.

48.35 Ac.
NE pt.

Fred & Brian
Hawk
OR120-53

Logan Clay
Products Co.
208-337
39.77 Ac.
NE 1/4 Pt.

Fred & Dixie
Lee
OR114-854
4.0 Ac.
NE 1/4 Pt.

Harold R. Strait
118-381
36.40 Ac.
NE 1/4 Pt.

Melvin Beck
206-756
6.20 Ac.
1/2 of NE 1/4 Pt.

Leslie & Rebecca
Jarrell
OR66-661

38.53 Ac.
(S.L.)

OR56-446, Martha J. McGlothlin
155-53
10.0 Ac., SE Pt.

Ben Sheppard
162-379, OR163-842
10.31 Ac., SE Pt.

Brian & James Kirk
OR5-753, 755
10.32 Ac.
SE Pt.

H. David Barrett
202-483
83.0 Ac.
W 1/2 of SW 1/4

31 Ac
NE SW Pt.

Christopher
Jarrell
OR124-754

35.30 Ac.
SE Pt.
(SL)

James Sr. &
Rebecca
Kirk
OR42-640
2.22 Ac.

James Jr. & Denise Frasure
OR86-863
8.08 Ac., SE Pt.

Tot. 18.08 Ac.
OR126-271
10.0 Ac.
SE Pt.

Dean L. Buri
161-45
23.0 Ac.
SW Pt.
(SL)

Nancy Q. Eisnaugle
161-233
22.87 Ac.
SW Pt.
(SL)

Doyle Anderson
OR142-136

Edward Fassig, Trustee, Et al
168-573, 220-226, OR89-92
10.40 Ac., SE Pt.

Edward Fassig, Trustee
OR89-92
23.0 Ac.
SE Pt.
(SL)

John Osborne
156-181 14.0 Ac.
SE SW & SE Pts. (SL)

SEC. 10