

4-5-00

HOCKING COUNTY

Sec. 12 T13 R17

WASHINGTON TWP.

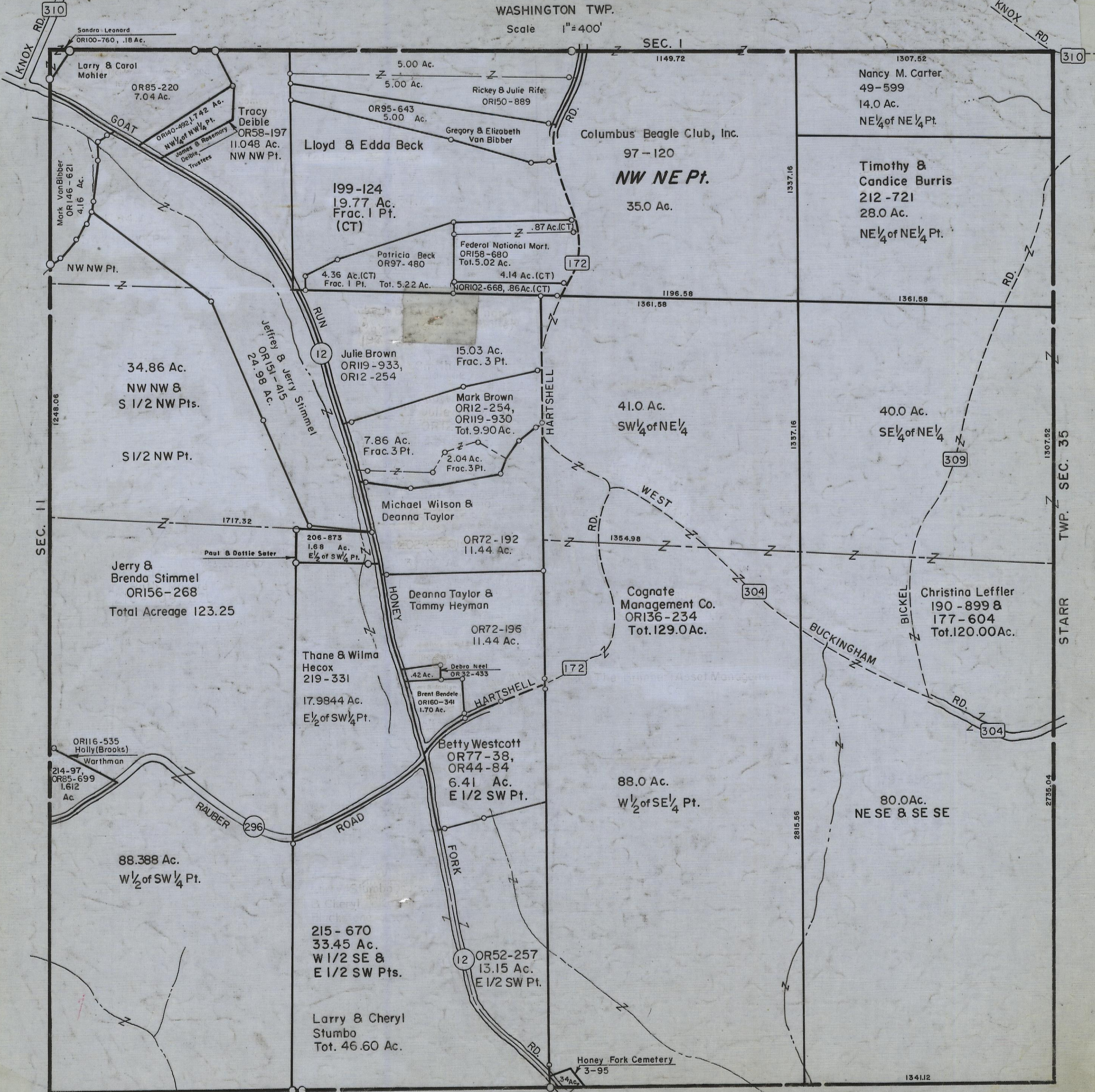
Scale 1" = 400'

SEC. 1

1149.72

KNOX RD.

310



Sandra Leonard
OR100-760, .18 Ac.

Larry & Carol Mohler
OR85-220
7.04 Ac.

GOAT RUN

OR180-492, 1.742 Ac.
NW 1/4 of NW 1/4 Pt.

Tracy Deible
OR58-197
11.048 Ac.
NW NW Pt.

James & Rosemary Deible, Trustees

Mark VonBibber
OR146-621
4.16 Ac.

NW NW Pt.

1248.06

34.86 Ac.
NW NW &
S 1/2 NW Pts.

S 1/2 NW Pt.

Jeffrey & Jerry Stimmel
OR151-415
24.98 Ac.

12

1717.32

Jerry & Brenda Stimmel
OR156-268
Total Acreage 123.25

Paul & Dottie Seter
206-873
1.68 Ac.
E 1/2 of SW 1/4 Pt.

OR116-535
Holly(Brooks)
Warthman

214-97,
OR85-699
1.612
Ac.

88.388 Ac.
W 1/2 of SW 1/4 Pt.

RAUBER ROAD

296

215-670
33.45 Ac.
W 1/2 SE &
E 1/2 SW Pts.

Larry & Cheryl Stumbo
Tot. 46.60 Ac.

12

OR52-257
13.15 Ac.
E 1/2 SW Pt.

HONEY FORK RD.

12

34 Ac.

Honey Fork Cemetery
3-95

SEC. 13

1341.12

1307.52

Nancy M. Carter
49-599
14.0 Ac.
NE 1/4 of NE 1/4 Pt.

Timothy & Candice Burris
212-721
28.0 Ac.
NE 1/4 of NE 1/4 Pt.

41.0 Ac.
SW 1/4 of NE 1/4

40.0 Ac.
SE 1/4 of NE 1/4

1307.52

5.00 Ac.

5.00 Ac.

OR95-643
5.00 Ac.

Lloyd & Edda Beck

199-124
19.77 Ac.
Frac. 1 Pt.
(CT)

Patricia Beck
OR97-480
4.36 Ac.(CT)
Frac. 1 Pt. Tot. 5.22 Ac.

Federal National Mort.
OR158-680
Tot. 5.02 Ac.
4.14 Ac.(CT)
NOR102-668, .86 Ac.(CT)

1361.58

1361.58

15.03 Ac.
Frac. 3 Pt.

Julie Brown
OR119-933,
OR12-254

Mark Brown
OR12-254,
OR119-930
Tot. 9.90 Ac.

7.86 Ac.
Frac. 3 Pt.

2.04 Ac.
Frac. 3 Pt.

Michael Wilson & Deanna Taylor

OR72-192
11.44 Ac.

Deanna Taylor & Tammy Heyman

OR72-195
11.44 Ac.

Thane & Wilma Hecox
219-331
17.9844 Ac.
E 1/2 of SW 1/4 Pt.

.42 Ac.
Debra Neel
OR32-433

Brent Bendele
OR160-341
1.70 Ac.

Betty Westcott
OR77-38,
OR44-84
6.41 Ac.
E 1/2 SW Pt.

88.0 Ac.
W 1/2 of SE 1/4 Pt.

80.0 Ac.
NE SE & SE SE

1354.98

1304

Cognate Management Co.
OR136-234
Tot. 129.0 Ac.

BUCKINGHAM RD.

304

309

Christina Leffler
190-899 &
177-604
Tot. 120.00 Ac.

1337.16

1337.16

1307.52

2735.04

SEC. 35

STARR

SEC. 12