

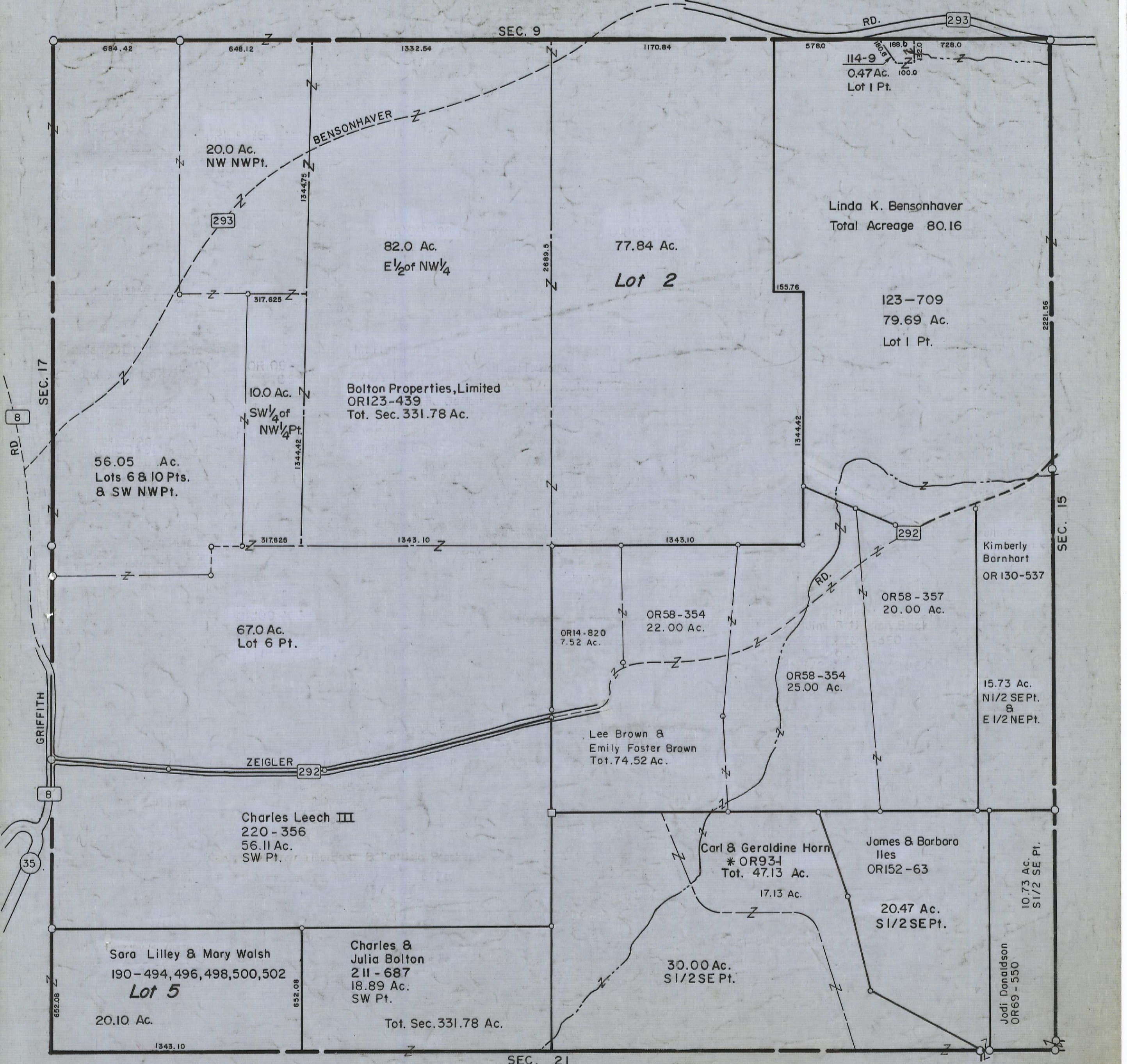
4-5-00

# HOCKING COUNTY

Sec. 16 T13 R17

WASHINGTON TWP.

Scale 1" = 400'



SEC. 9

RD. 293

20.0 Ac.  
NW NWPt.

BENSONHAVER

114-9  
0.47 Ac.  
Lot 1 Pt.

Linda K. Bensonhaver  
Total Acreage 80.16

82.0 Ac.  
E 1/2 of NW 1/4

77.84 Ac.  
**Lot 2**

123-709  
79.69 Ac.  
Lot 1 Pt.

Bolton Properties, Limited  
OR123-439  
Tot. Sec. 331.78 Ac.

OR108-  
10.0 Ac.  
SW 1/4 of  
NW 1/4 Pt.

56.05 Ac.  
Lots 6 & 10 Pts.  
& SW NWPt.

67.0 Ac.  
Lot 6 Pt.

Kimberly  
Barnhart  
OR130-537

OR58-354  
22.00 Ac.

OR58-357  
20.00 Ac.

OR14-820  
7.52 Ac.

OR58-354  
25.00 Ac.

Lee Brown &  
Emily Foster Brown  
Tot. 74.52 Ac.

15.73 Ac.  
N 1/2 SEPT.  
&  
E 1/2 NEPt.

Charles Leech III  
220-356  
56.11 Ac.  
SW Pt.

Carl & Geraldine Horn  
\*OR93-1  
Tot. 47.13 Ac.  
17.13 Ac.

James & Barbara  
Iles  
OR152-63

20.47 Ac.  
S 1/2 SEPt.

Sara Lilley & Mary Walsh  
190-494, 496, 498, 500, 502  
**Lot 5**  
20.10 Ac.

Charles &  
Julia Bolton  
211-687  
18.89 Ac.  
SW Pt.  
Tot. Sec. 331.78 Ac.

30.00 Ac.  
S 1/2 SE Pt.

Jodi Donaldson  
OR69-550

10.73 Ac.  
S 1/2 SE Pt.

SEC. 21

# SEC. 16