

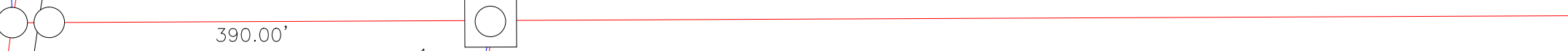
E 1/2 NW Pt.

UR31-240

9.00 Ac.

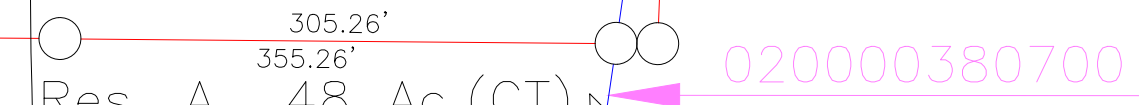
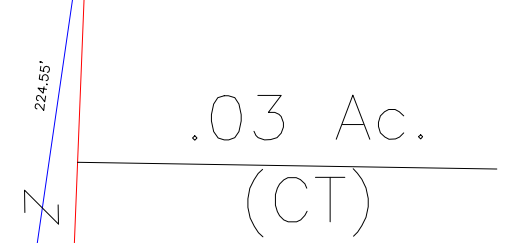
020000290100

DOWLER

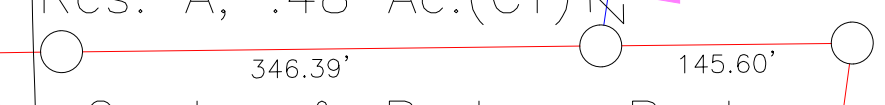


390.00'
William & Beth Reed
OR139-930
2.00 Ac. (CT)
020000380100

1



Robert & Diane
Stockdale
OR298-835

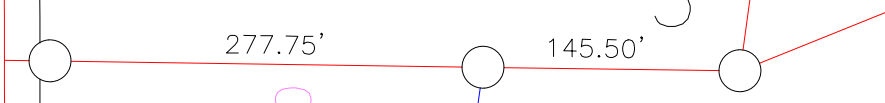


305.26'
355.26'
346.39'
Gordon & Barbara Pask
OR133-59
1.84 Ac.
020000380200

2

Diane Snedeker
OR311-340
3.04 Ac.
020000380300

17.31 Ac. (CT)
SW NE Pt.
020000280000



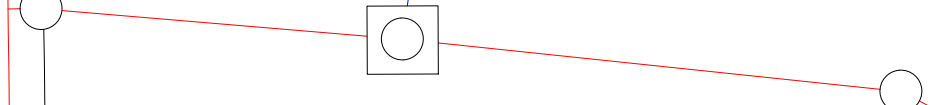
277.75'
145.50'
OR238-918
1.85 Ac.
(CT)
020000380400

4

WALNUT RIDGE HOMES SUB. (Phase 1)

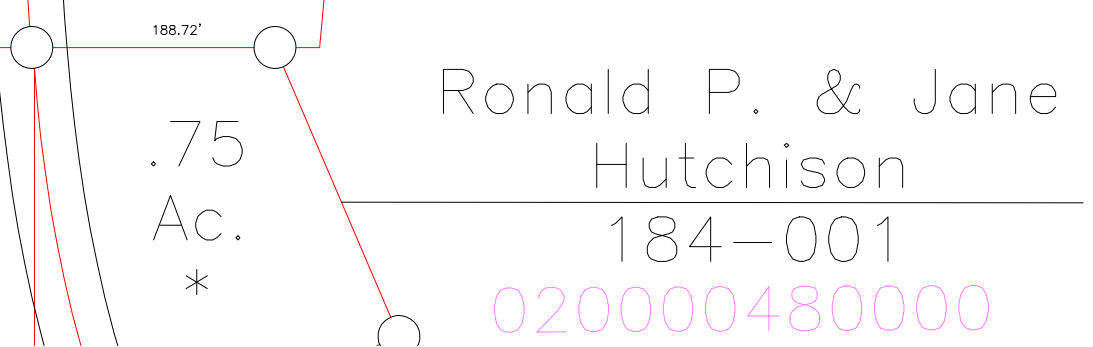
- Lots 1-5
- Plat Cab. 1, Pg. 196 A
- Lots 2, 3 Revised
- Plat Cab. 2, Pg. 62

WALNUT



231.55'
372.56'
Jared & Kimberly
Christman
OR198-883
1.84 Ac.
020000380500

5



188.72'
.75 Ac.
*
Ronald P. & Jane
Hutchison
184-001
020000480000

