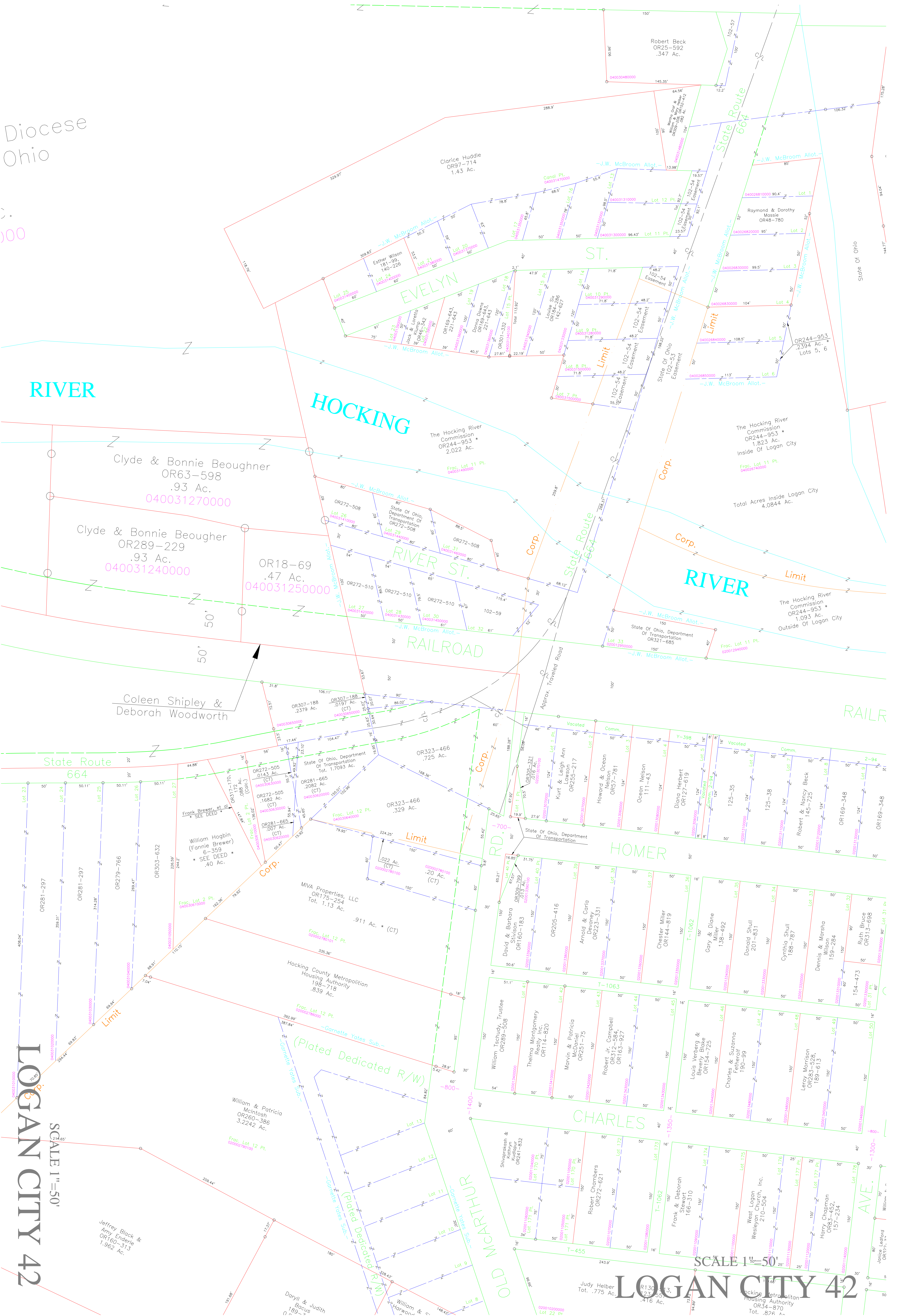


Diocese  
Ohio

000



RIVER

HOCKING

RIVER ST.

RAILROAD

HOMER

CHARLES

OLD MARLBUR

RAIL

RIVER

LOGAN CITY 42

SCALE 1"=50'

SCALE 1"=50'

LOGAN CITY 42

Jeffrey Black & Amy Enderle  
OR160-313  
1.962 Ac.

Darryl & Judith Barus  
189

William & Patricia

Judy Helber  
Tot. .775 Ac.

Hocking Metropolitan Housing Authority  
OR34-870  
Tot. .876 Ac.

Clyde & Bonnie Beoughner  
OR63-598  
.93 Ac.  
040031270000

Clyde & Bonnie Beoughner  
OR289-229  
.93 Ac.  
040031240000

OR18-69  
.47 Ac.  
040031250000

Coleen Shipley & Deborah Woodworth

William Hogbin (Fannie Brewer)  
6-359  
\* SEE DEED \*  
.40 Ac.

MVA Properties, LLC  
OR175-254  
Tot. 1.13 Ac.

Hocking County Metropolitan Housing Authority  
198-718  
.839 Ac.

William & Patricia McIntosh  
OR280-386  
3.2242 Ac.

Clarice Huddle  
OR97-714  
1.43 Ac.

Robert Beck  
OR25-592  
.347 Ac.

The Hocking River Commission  
OR244-953 \*  
2.022 Ac.

The Hocking River Commission  
OR244-953 \*  
1.823 Ac.  
Inside Of Logan City

Total Acres Inside Logan City  
4.0844 Ac.

The Hocking River Commission  
OR244-953 \*  
1.093 Ac.  
Outside Of Logan City

(Plated Dedicated R/W)  
(Plated Dedicated R/W)

(Plated Dedicated R/W)

(Plated Dedicated R/W)

(Plated Dedicated R/W)

(Plated Dedicated R/W)

(Plated Dedicated R/W)

(Plated Dedicated R/W)

(Plated Dedicated R/W)

(Plated Dedicated R/W)

(Plated Dedicated R/W)