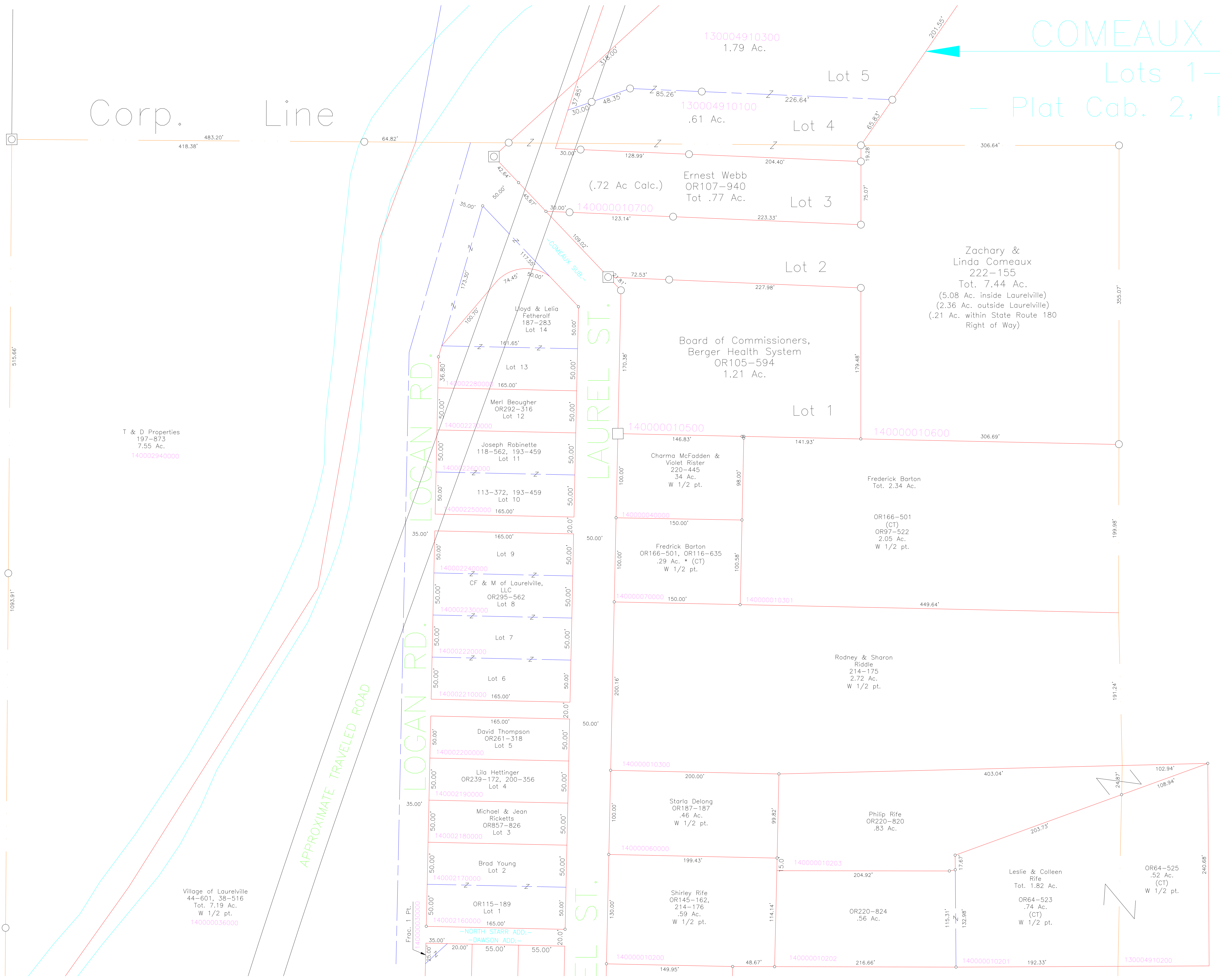


# PICKAWAY COUNTY

Corp. Line

COMEAX SUE

Lots 1-5  
- Plat Cab. 2, Pgs.



T & D Properties  
197-873  
7.55 Ac.  
140002940000

Village of Laurelville  
44-601, 38-516  
Tot. 7.19 Ac.  
W 1/2 pt.  
140000036000

APPROXIMATE TRAVELED ROAD

LOGAN RD.

LOGAN RD.

LAUREL ST.

LAUREL ST.

Zachary & Linda Comeaux  
222-155  
Tot. 7.44 Ac.  
(5.08 Ac. inside Laurelville)  
(2.36 Ac. outside Laurelville)  
(.21 Ac. within State Route 180 Right of Way)

Board of Commissioners,  
Berger Health System  
OR105-594  
1.21 Ac.

Charma McFadden & Violet Rister  
220-445  
34 Ac.  
W 1/2 pt.

Rodney & Sharon Riddle  
214-175  
2.72 Ac.  
W 1/2 pt.

Philip Rife  
OR220-820  
.83 Ac.

Leslie & Colleen Rife  
Tot. 1.82 Ac.  
OR64-523  
.74 Ac.  
(CT)  
W 1/2 pt.

OR64-525  
.52 Ac.  
(CT)  
W 1/2 pt.