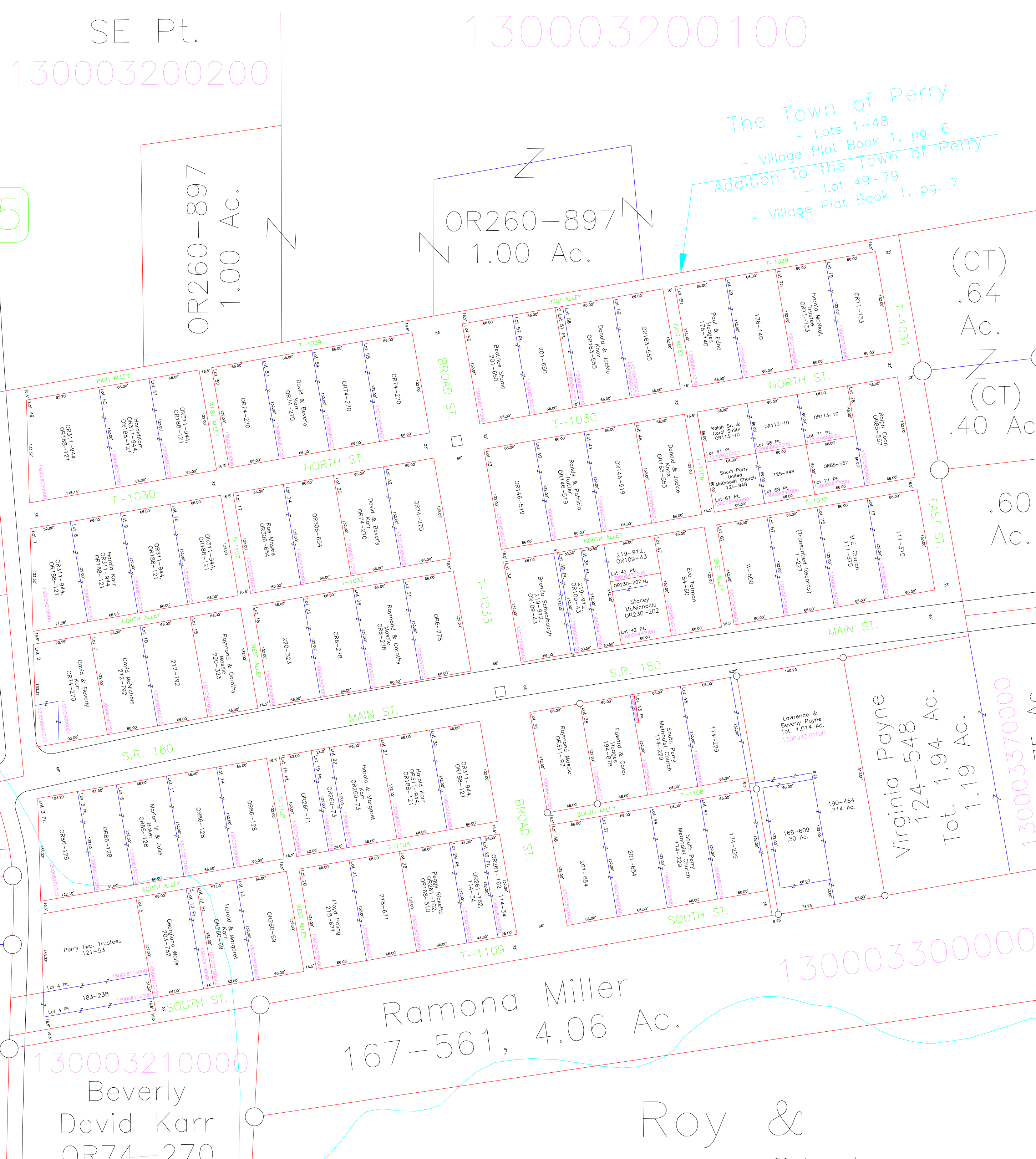


SE Pt.  
130003200200  
WAG  
155  
Ac.  
t.  
Ac.  
00  
209-593  
1.40 Ac.  
51 Ac.  
1.11 Ac.  
Crosby  
54 Ac.  
280100  
7-611  
Ac.



The Town of Perry  
- Lots 1-48  
- Village Plat Book 1, pg. 6  
Addition to the Town of Perry  
- Lot 49-79  
- Village Plat Book 1, pg. 7

130003400000  
Harold McNeal  
Trustee  
Tot. 1.04 Ac.

OR71-736  
OR71-734  
Gary &  
Holly Coover  
OR103-402  
130003340000

130003370000  
75 Ac.

Virginia Payne  
124-548  
Tot. 1.94 Ac.  
1.19 Ac.

130003300000

130003180201

Paul &  
Hedg  
208-  
7.70  
Lot  
1300031

Harry & Carol Kaiser  
OR175-53, 2.46 Ac., Lot 1A

169.45'  
102.98'  
339.42'  
697.54'