

Thomas
OR259-767 *
40.00 Ac.
SW Pt.
190002590000

Jimmie Silberzahn
OR157-432
OR165-914
Tot. 13.78 Ac.
190002500000
12.24 Ac.
E 1/2 E 1/2 SW Pt.

Robert Jones, Jr.
222-131
13.03 Ac.
190002520000
E 1/2 W 1/2
SE Pt.

OR122-901
25.00 Ac.
W 1/2 SW Pt.
190002400000
23.26 Ac.
NE SW Pt.
SE SW Pt.
190002400100

WS18
WS19

T13N R17W
T13N R17W

WS18
WS19
WS20

POINT PLEASANT
Paul & Althea Thomas
OR259-767 *
41.94 Ac.
Frac. 1 Pt.,
Point Pleasant Pt.
190002700000

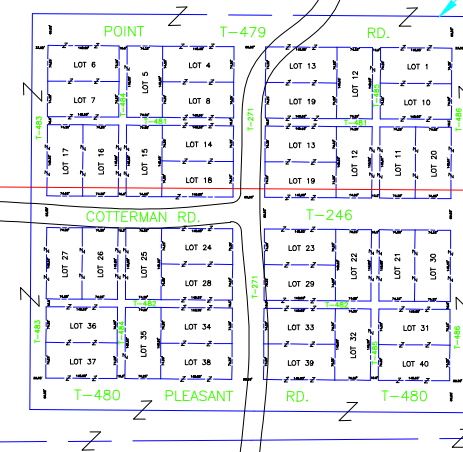
Albert Campbell III
OR183-419
Tot. 80.0 Ac.
190002680000

Albert Campbell III
OR183-419
Tot. 61.00 Ac.
190002730000

Betty, William
Carolyn Robs
OR172-35
20.40 Ac.
NE NW Pt
190002810100

246

T11N R18W
T13N R17W



Frac. 1,
Point Pleasant Pts.

129.10 Ac.
Frac. 1, 2, NE SW,
Point Pleasant Pts.

Jimmie Silberzahn
OR157-432,
OR165-914
83.16 Ac.
W 1/2 NE
190002690000

Carolyn Gifford
OR294-645
36.73 Ac.
Frac. 1, 2,
NE SW Pts.
190002710000

40.00 Ac.
W 1/2 E 1/2 NE

20.00 Ac.
N 1/2 E 1/2
E 1/2 NE

40.00 Ac.
NW NW

Henrietta
Griffith
216-145
OR115-843
Tot. 108. 75
190002780000

Bolton
Properties, Ltd.
OR123-439
Tot. 169.10 Ac.
190002710200

Frac. 2 Pt.

40.00 Ac.
NW SW

NE SW Pt.

Robert &
Thelma Steele
OR159-314
41.00 Ac.
NW SE
190002710100

OR139-866
80.00 Ac.
E 1/2 SE
190002720100

Craig &
Tammie Hull
OR136-372
123.00 Ac.
W 1/2 SW
190002820000

BE12
BE13

OR199-866
82.00 Ac.
S 1/2 SW

Craig & Tammie
Hull
Tot. 202.00 Ac.
190002720000

OR199-866
40.00 Ac.
SW SE

WS19
WS30

T13N R17W
T13N R17W

WS19
WS30
WS20
WS29

Craig & Tammie Hull
OR139-554
20.00 Ac.
N 1/2 NE NE
(CT)
190004030100

39.68 Ac.
NW NE

Craig & Tammie Hull
OR222-607
73.75 Ac.
NW Pt.

Wendell &
Tami Hull