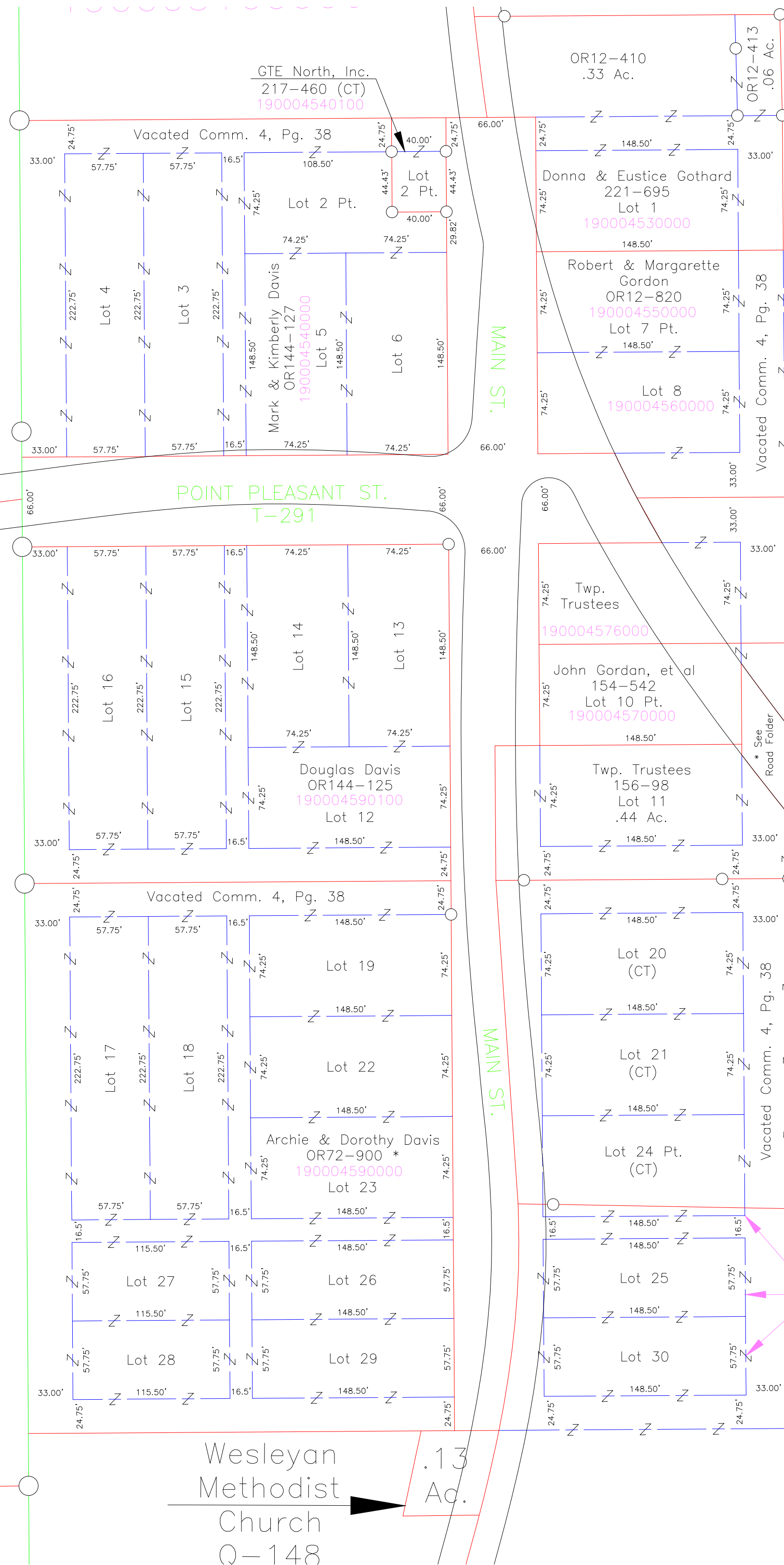


2910200

es &
ara lles
79-61
1 Ac.
1/2,
Pt.



OR12-820
190003000000

16.34 Ac.
Frac. 6 Pt.

ILESBORO

7.70 Ac. *
NW NW Pt.

Randall
Davis
OR32-518 *
Tot. 3.47 Ac.

Tot. Ilesboro Cem.

t.
0