

David & Kimberly Cummin
Tot. 99.35 Ac.
020001130000

OR124-71
84.00 Ac. (CT)
W 1/2 NE Pt.

34.77 Ac.
Frac. 3, 5 Pts.

Michael Risch
OR286-754

Harold Heinlein Jr.
182-674
6.79 Ac.*
020001210000

Dick & Ramona Hurst
OR363-332
3.95 Ac.
020001210304

Douglas Ringhiser
219-862
6.59 Ac.
E 1/2 NE Pt.
020001210300

OR351-858
.84 Ac.
020001210303

Luke & Martha Donahue
Tot. 13.84 Ac.
020001210302

OR421-627
6.00 Ac.
020001210302

OR452-856
6.00 Ac.
020001210301

Robert & Katharin Ricketts
OR100-390
15.00 Ac.
020001210200

OR120-368
10.00 Ac. (CT)

OR120-368
.04 Ac. (CT)

Vicki Acker
OR445-521,
OR444-605
Tot. 9.95 Ac.
020001240000

Gregory Brown
Tot. 15.79 Ac. (Knollwood Cem.)
OR34-893
7.57 Ac.
Frac. 1, 2 Pts.
020001040000

Benjamin Crawford
OR324-148
2.56 Ac.
020001030300

Illies-Mathias Farm, et al.
Tot. 87.16 Ac.
020001030000

OR390-265
(95.06 Ac. Falls 5)
(.294 Ac. Logan)

Charles & Josephine Mathias,
Life Estate

Michael & Christine Risch
208-453,
183-72
.39 Ac.
020002390000

Randy & Janet Mathias
Tot. 3.47 Ac. (Morningside)
020001030100
2.45 Ac.

Michael & Christine Risch
183-72, 208-453
.06 Ac.
020002390000

215-181
39.66 Ac.
E 1/2 NE Pt.
020001230000

Gary & Sandra Starner
Tot. 40.00 Ac.
020001230000

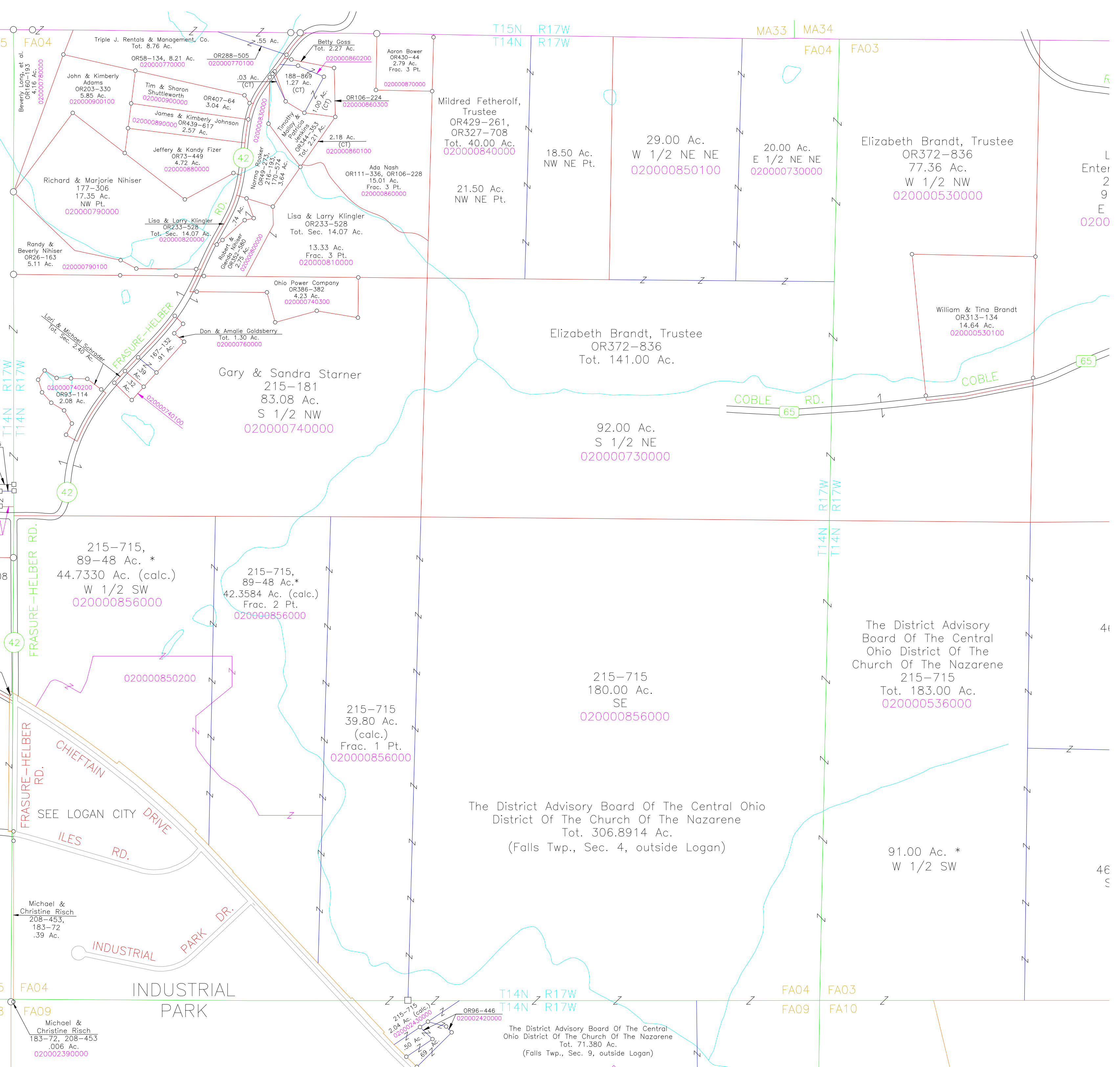
215-715,
89-48 Ac. *
44.7330 Ac. (calc.)
W 1/2 SW
020000856000

Gary & Sandra Starner
215-181
83.08 Ac.
S 1/2 NW
020000740000

The District Advisory Board Of The Central Ohio District Of The Church Of The Nazarene
Tot. 306.8914 Ac.
(Falls Twp., Sec. 4, outside Logan)

91.00 Ac. *
W 1/2 SW

The District Advisory Board Of The Central Ohio District Of The Church Of The Nazarene
Tot. 71.380 Ac.
(Falls Twp., Sec. 9, outside Logan)



Enter
2
9
E
0200

41

46
S