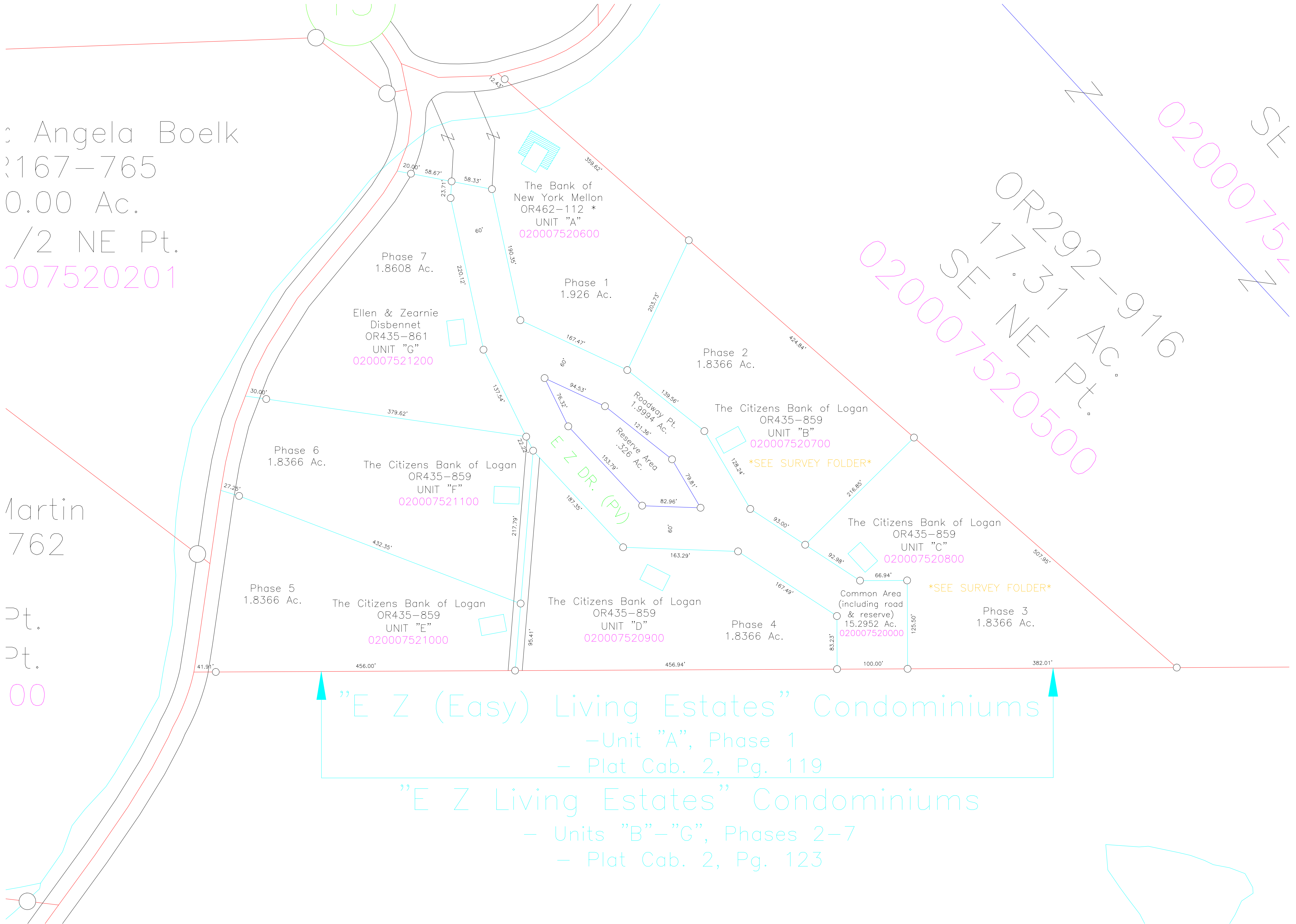


Angela Boelk
167-765
0.00 Ac.
1/2 NE Pt.
007520201

Martin
762

00



OR292-916
SEE NE Pt.
020007520500

"E Z (Easy) Living Estates" Condominiums
- Unit "A", Phase 1
- Plat Cab. 2, Pg. 119

"E Z Living Estates" Condominiums
- Units "B"- "G", Phases 2-7
- Plat Cab. 2, Pg. 123