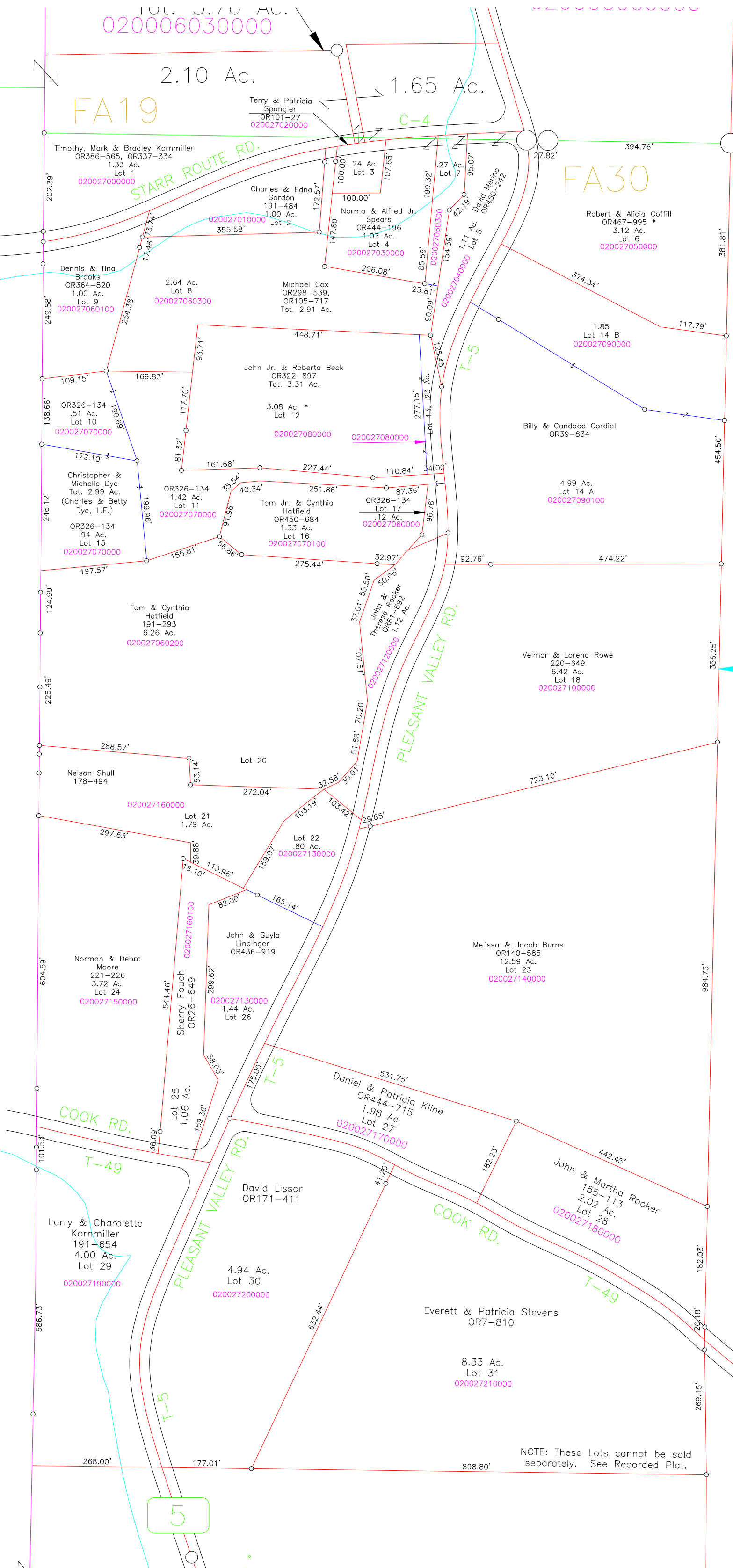


LA12
LA13



211-290
8.50 Ac. (CT)

193-291
5.45 Ac.
020006120000

Michael & Karen Beyer
OR350-583
020008510000
E 1/2 NW Pt.

David & Nancy Turner
193-291
4.55 Ac.
020008500000

0200060
1.46 Ac.
020006
1.29 Ac.

Roy Shull Farm
- Lots 1-35
- (fka Plat Book G, pgs. 32, 33
- Plat Cab. 1 pgs. 152 B, 153 A
Revised Lot 14
- Plat Cab. 2, pg. 30

William Brooks
211-260
70.55 Ac.
E 1/2 NW Pt.
020008490000

William, Seth & Kasey Warthman
OR400-622

4

49

5

NOTE: These Lots cannot be sold separately. See Recorded Plat.