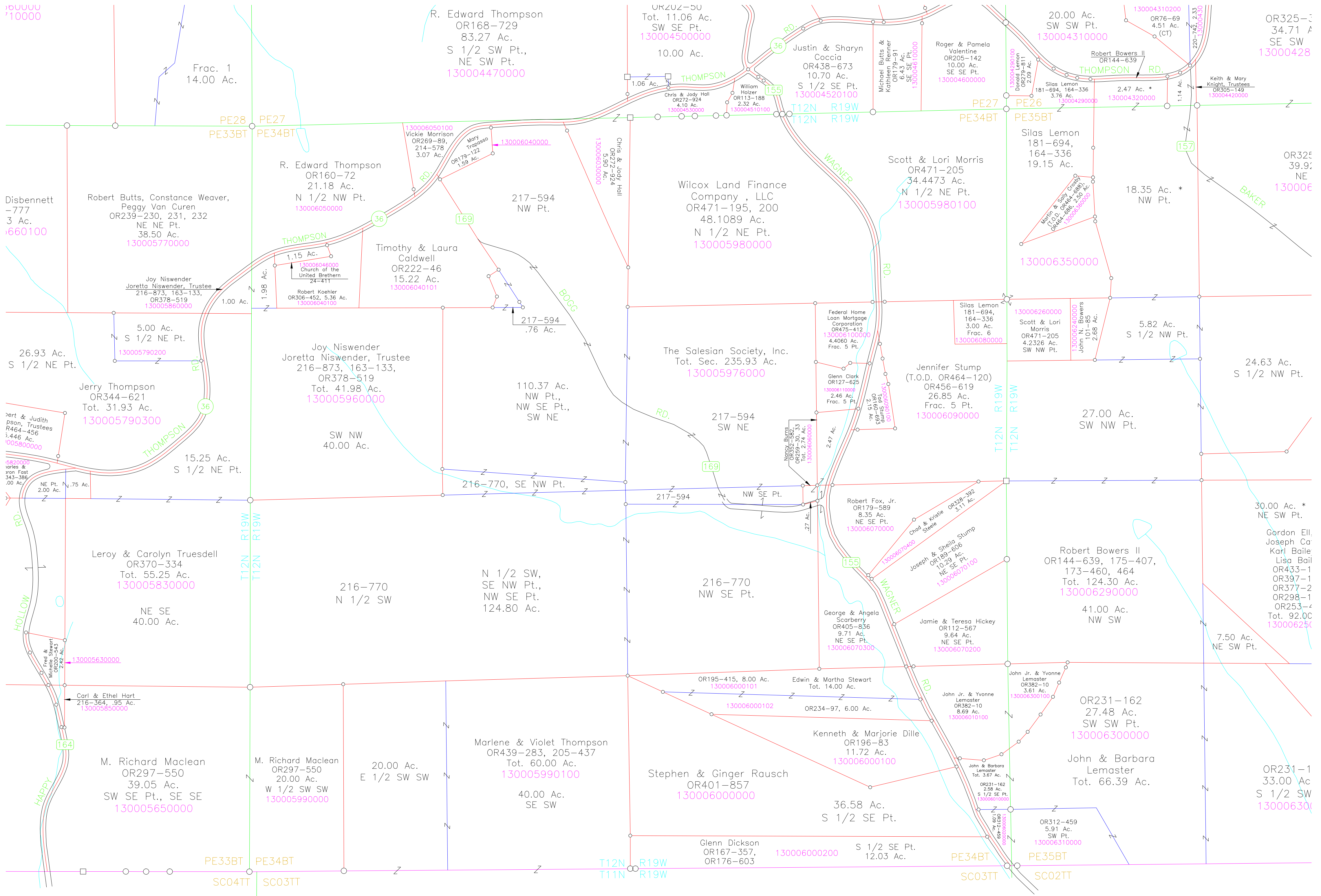


10000
10000



Frac. 1
14.00 Ac.

R. Edward Thompson
OR168-729
83.27 Ac.
S 1/2 SW Pt.,
NE SW Pt.
130004470000

OR202-50
Tot. 11.06 Ac.
SW SE Pt.
130004500000
10.00 Ac.

Justin & Sharyn
Coccia
OR438-673
10.70 Ac.
S 1/2 SE Pt.
130004520100

20.00 Ac.
SW SW Pt.
130004310000

OR325-3
34.71 Ac
SE SW
13000428

PE28 PE27
PE33BT PE34BT

R. Edward Thompson
OR160-72
21.18 Ac.
N 1/2 NW Pt.
130006050000

130006050100
Vickie Morrison
OR269-89,
214-578
3.07 Ac.

130006040000
Mary Tropasso
OR179-122
1.59 Ac.

130006030000
Chris & Jody Hall
OR272-924
4.10 Ac.

130004510100
William Holzer
OR113-188
2.32 Ac.

130004610000
Michael Butts &
Kathleen Renner
OR179-91
6.43 Ac.

130004600000
Roger & Pamela
Valentine
OR205-142
10.00 Ac.

130004290100
Donald Lemmon
OR111
21.09 Ac.

130004290000
Silas Lemon
181-694, 164-336
3.76 Ac.

130004320000
Robert Bowers II
OR144-639
2.47 Ac. *

130004200000
Keith & Mary
Knight, Trustees
OR305-149

Disbennett
-777
3 Ac.
130005770000

Robert Butts, Constance Weaver,
Peggy Van Curen
OR239-230, 231, 232
NE NE Pt.
38.50 Ac.
130005770000

Joy Niswender
Joretta Niswender, Trustee
216-873, 163-133,
OR378-519
130005860000

130006046000
Church of the
United Brethren
24-411
1.15 Ac.

Timothy & Laura
Caldwell
OR222-46
15.22 Ac.
130006040101

217-594
NW Pt.

Wilcox Land Finance
Company, LLC
OR471-195, 200
48.1089 Ac.
N 1/2 NE Pt.
130005980000

Scott & Lori Morris
OR471-205
34.4473 Ac.
N 1/2 NE Pt.
130005980100

Silas Lemon
181-694,
164-336
19.15 Ac.

18.35 Ac. *
NW Pt.

OR325
39.9;
NE
130006

5.00 Ac.
S 1/2 NE Pt.
130005790200

Joy Niswender
Joretta Niswender, Trustee
216-873, 163-133,
OR378-519
Tot. 41.98 Ac.
130005960000

110.37 Ac.
NW Pt.,
NW SE Pt.,
SW NE

The Salesian Society, Inc.
Tot. Sec. 235.93 Ac.
130005976000

130006100000
Federal Home
Loan Mortgage
Corporation
OR475-412
4.4060 Ac.
Frac. 5 Pt.

130006080000
Silas Lemon
181-694,
164-336
3.00 Ac.
Frac. 6

130006260000
Scott & Lori
Morris
OR471-205
4.2326 Ac.
SW NW Pt.

5.82 Ac.
S 1/2 NW Pt.

24.63 Ac.
S 1/2 NW Pt.

130005800000
Dert & Judith
Truesdell, Trustees
R464-456
3.446 Ac.

Jerry Thompson
OR344-621
Tot. 31.93 Ac.
130005790300

15.25 Ac.
S 1/2 NE Pt.

SW NW
40.00 Ac.

216-770, SE NW Pt.

217-594
NW SE Pt.

217-594
SW NE

130006090000
Jennifer Stump
(T.O.D. OR464-120)
OR456-619
26.85 Ac.
Frac. 5 Pt.

130006260000
Scott & Lori
Morris
OR471-205
4.2326 Ac.
SW NW Pt.

27.00 Ac.
SW NW Pt.

30.00 Ac. *
NE SW Pt.

Leroy & Carolyn Truesdell
OR370-334
Tot. 55.25 Ac.
130005830000

NE SE
40.00 Ac.

216-770
N 1/2 SW

N 1/2 SW,
SE NW Pt.,
NW SE Pt.
124.80 Ac.

216-770
NW SE Pt.

130006070000
Robert Fox, Jr.
OR179-589
8.35 Ac.
NE SE Pt.

130006070400
Ophel & Kristie
Steele
OR328-392
3.11 Ac.

130006070100
Joseph & Sheila Stump
OR169-606
10.29 Ac.
NE SE Pt.

Robert Bowers II
OR144-639, 175-407,
173-460, 464
Tot. 124.30 Ac.
130006290000

41.00 Ac.
NW SW

Gordon Ell,
Joseph Carl
Karl Baile
Lisa Bail
OR433-1
OR397-1
OR377-2
OR298-1
OR253-4
Tot. 92.00
130006250

7.50 Ac.
NE SW Pt.

130005850000
Carl & Ethel Hort
216-364, .95 Ac.

M. Richard Maclean
OR297-550
39.05 Ac.
SW SE Pt., SE SE
130005650000

M. Richard Maclean
OR297-550
20.00 Ac.
W 1/2 SW SW
130005990000

20.00 Ac.
E 1/2 SW SW

Marlene & Violet Thompson
OR439-283, 205-437
Tot. 60.00 Ac.
130005990100

40.00 Ac.
SE SW

Stephen & Ginger Rausch
OR401-857
130006000000

36.58 Ac.
S 1/2 SE Pt.

OR195-415, 8.00 Ac.
130006000101

OR234-97, 6.00 Ac.
130006000102

Edwin & Martha Stewart
Tot. 14.00 Ac.

Kenneth & Marjorie Dille
OR196-83
11.72 Ac.
130006000100

130006070200
Jamie & Teresa Hickey
OR112-567
9.64 Ac.
NE SE Pt.

130006300100
John Jr. & Yvonne
Lemaster
OR382-10
3.61 Ac.

OR231-162
27.48 Ac.
SW SW Pt.
130006300000

John & Barbara
Lemaster
Tot. 66.39 Ac.

OR231-1
33.00 Ac
S 1/2 SW
13000630

PE33BT PE34BT
SC04TT SC03TT

T12N R19W
T11N R19W

PE34BT PE35BT
SC03TT SC02TT