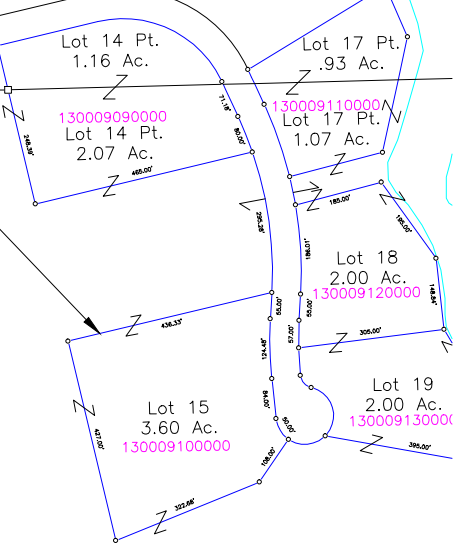


MADISON27 PE34TT
MADISON26 PE35TT

FAIRFIELD COUNTY T13N R19W
T13N R19W

MADISON26 PE35TT
MADISON25 PE36TT

SNORTIN RIDGE SUB.
- Lots 14-19 (Hocking County)
- (fka Plat Book G, Pgs. 5, 6, 7)
- Plat Cab. 1, pgs. 139 A,B, 140 A,B



Cindy Henderly
OR446-12
Tot. 79.00 Ac.
130006490000

21.04 Ac.
NW Pt.

OR186-754
4.5 Ac.
Snortin Ridge
Company, LLC
Tot. 73.80 Ac.

OR186-754
26.82 Ac.
Frac. 1, 2 Pts.
130006510000

Snortin Ridge
Subdivision
OR186-754
148-374
36.81 Ac.
"Reserve Area"
130006380000

Snortin Ridge
Subdivision
OR186-754
70.625 Ac.
"Reserve Area"
130006690000

Snortin Ridge
Company, LLC
OR186-750
134.02 Ac.
W 1/2 Pt.
130006680000

Darrin & Shelby Davis
OR262-315
OR74-26
80.16 Ac.
E 1/2 NE
130006130000

30.00 Ac.
SW NW Pt.

54.35 Ac.
NW Pt.
John Wisse
OR450-185
Tot. 75.39 Ac.
130006410000

Wendell & S.
Ellen Williams
OR67-625
14.27 Ac.
NE Pt.
130006390100

Linda Strohm &
Charles Sahr
OR159-303
17.30 Ac.
NE Pt.
130006390000

Snortin Ridge
Company, LLC
Tot. 73.80 Ac.

OR186-750
42.48 Ac.
130006400000

17.00 Ac.
SW NE Pt., NW SE Pt.
130006430000

Robin Gofberg
190-355
Tot. Sec. 41.43 Ac.
130006430000

20.00 Ac.
SW NE Pt., NW SE Pt.
130006430000

James & Wendy
Thomson
OR230-737
20.26 Ac.
NE SE Pt.
130006500100

James & Wendy
Thomson
OR230-737
Tot. 28.29 Ac.
130006740100

Timothy & Karen
Jubach
Tot. Sec. 54.2157 Ac.
OR331-827
30.3544 Ac.
130006440300

OR331-837
22.4219 Ac.
130006440700

OR331-837
31.7404 Ac.
130006440000

David Thomas
OR212-900
Tot. 18.55 Ac.
130006450000
16.02 Ac.

Benny &
Patricia Nichols
OR85-490
12.17 Ac.
NE SE Pt.
130006500000

Morgan Chapel
U.M. Church
Trustees
Tot. 1.50 Ac.
(CT)
130006746400

Robin Gofberg
Tot. Sec. 41.43 Ac.
OR443-788
4.43 Ac.
NE SE Pt.
130006500200

16-116,
75-878
.00 Ac.
1/2 SE
130006200000

KTSC Real Estate
Investment Company, LLC
Tot. Sec. 82.4927 Ac.
OR331-837
4.6641 Ac. (CT)
130006440501

OR331-820
14.0653 Ac.
130006440201

Dorothy & Roy Young
OR466-341, 217-574
21.19 Ac.
SE Pt.
130006520000

Robin Gofberg
OR443-788
7.57 Ac.
130006740200

Virginia Corder
OR5-521,
OR228-203
12.00 Ac.
130006740300

Carlene Carroll
OR103-194, 207-533,
OR52-604
62.76 Ac.
S 1/2 SE Pt.
130006200000

KTSC Real Estate
Investment Company,
LLC
Tot. Sec. 82.4927 Ac.
OR331-827
23.8613 Ac.
130006440400

OR331-837
23.6663 Ac.
130006440600

Thomas & Teresa Houle
OR464-470
20.00 Ac.
130006440500

OR331-820
18.8634 Ac.
130006440100

Timothy Jubach,
Trustee of the
Lean Enterprise Inc.,
401K Plan
Tot. 22.5029 Ac.
OR331-820
3.039 Ac.
130006440200

Eagle Wings I, LLC
OR413-956
14.0653 Ac.
130006440201

Edgar M. & Donna B. Stump,
Co. Trustees
OR372-136
13.00 Ac.
SE SE Pt.
130006530000

Robert &
Doris Wolfe
211-369
2.00 Ac.
130006540000

Homer Carrel
127-307
2.50 Ac.
SE Pt.
130006550000

Michael Justice
OR175-662
1.82 Ac.
130006740000

Randy & Brenda
Azbell
OR9-917
4.49 Ac.
130000480000

OR331-816
17.01 Ac.
Frac. 8 Pt.

Ronald Glick Jr.
OR5-248, 250
10.56 Ac.
NE Pt.
130000250000

Lin & Jerry Cassell
OR7-523, 10.49 Ac.
NW NE Pt.
130000380000

Michael & Ida North
OR474-513
10.706 Ac.
NE Pt.
130000240000

Jeremy & Lisa
Dennis
OR255-776, 3.31 Ac.
130000260000

David & Sandra
Seifert
OR321-99
6.01 Ac.
130000270000

Thomas Gray
OR446-743
6.01 Ac.
130000270100

David & Mary Azbell
OR301-899
4.19 Ac.
130000270200

Nancy &
William Gruezke
OR421-335, 2.00 Ac.
130000280000

Nancy & William
Gruezke
OR421-335
11.80 Ac.
NE NE Pt.
130000160000

Carmen Rincones
OR321-604
22.79 Ac.
NW NW Pt.
130000150000

William Cambell
OR287-938
26.31 Ac.
130000040400

Jack & Wretha Malone
130000040100

Deighton Jr. &
OR258-45,
13.64 Ac.
SE SW Pt.
130006790000

Christopher & Kimberly
Stump, et al.
OR178-166
13.64 Ac.
SE SW Pt.
130006790000

Deighton D. & Stephanie Stump
OR406-397
14.33 Ac.
SE SW Pt.
130006790400

Teresa & James Azbell
OR367-849
12.00 Ac.
SW Pt.
130006620000

1300066810000

13000679030000

OR172-354, 2.00 Ac.