

Dale Riddle
Forest Products, Inc.
Tot. Sec. 130.96 Ac. *

108-392
NE Pt.
29.05 Ac.
130005010000

NE Pt. Diana & Brian Cain
Tot. 51.07 Ac.

The Board of Education of
Laurelville Village District
59-663
130004916000

Eleanor Bowers
172-281
(T.O.D. OR457-21)
Tot. Sec. 12.362 Ac.
(including Laurelville)
3.91 Ac. *
(calc.)
SW Pt.

204-575
5.49 Ac.

130004920000
Holly Tatman &
Heidi Riddle
OR206-309

Jason Hettinger
130005160000
OR276-361
1.158 Ac.

10.206 Ac. *
130005150000

1.01 Ac. 36
Terry &
Mary Hartley
OR59-592
2.90 Ac.
130005140100

Larry & Twila
Martin
OR264-876
130005130000

Karen Hartley
Tot. 2.35 Ac.
OR84-724
130005140000

OR383-309 *
24.27 Ac. (Calc.)
SE SW Pt.
130004980000

Jack Hupp
Tot. 61.01 Ac.
(Sec. 31BT & Laurelville)

OR383-309 *
14.29 Ac.
130004980000

OR383-309 *
11.54 Ac.
130004980000

Federal Home
Loan Mortgage
Corporation
OR472-240
7.013 Ac.
130005110000

Scott
1
E 1/2
5
1300

OR207-375
2.25 Ac.
130005050300

OR376-819,
202-305
1.10 Ac.
13000505010001

OR148-672
1.03 Ac.
(CT)
130005050200

O. Bruce & Linda Burson
Tot. 4.38 Ac.

190-389,
195-483
1.75 Ac.

Kathryn Bode
160-72
130005060000

OR272-774
1.89 Ac. (CT)
130005050600

OR313-823
40.79 Ac.
NE Pt., SE Pt.,
NW SE Pt.
130005050000

OR148-668
4.07 Ac.
130005050400

Diana Cain,
Custodian
OR148-666
2.48 Ac.
130005050500

Howard &
Peggy Nelson
136-405
Tot. 2.34 Ac.
130005120000

Christopher Radabaugh
OR415-869
Tot. Sec. 7.60 Ac.
130005100000

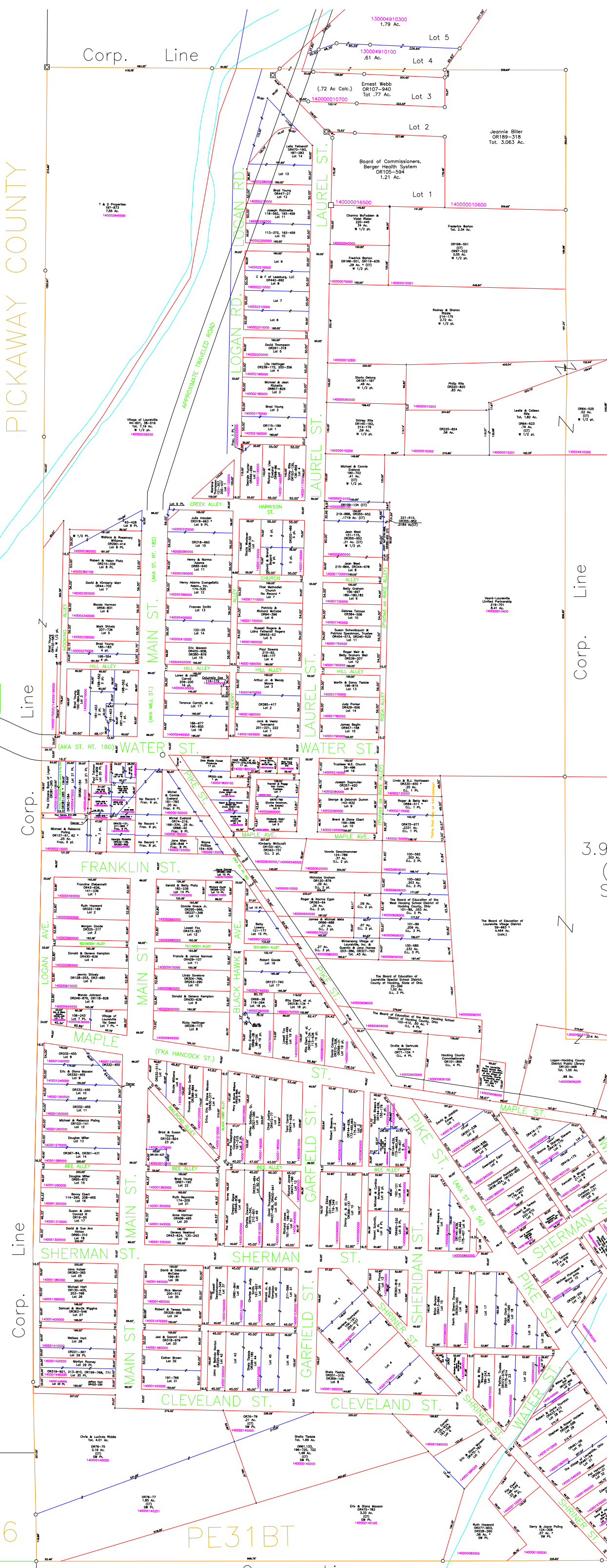
David Henson
OR202-417
130005100200

Christopher Radabaugh
OR415-869,
.38 Ac. *
130005100000

Darin Luswell
OR434-464
2.00 Ac.
130005101000

PICKAWAY COUNTY

180



Corp. Line

Corp. Line

Corp. Line

Corp. Line

Corp. Line

Corp. Line

56

T12N R19W
T11N R19W

COUNTY

COUNTY

R20W SALT CREEK36

R20W COLERAIN01

PE31BT

SC06TT