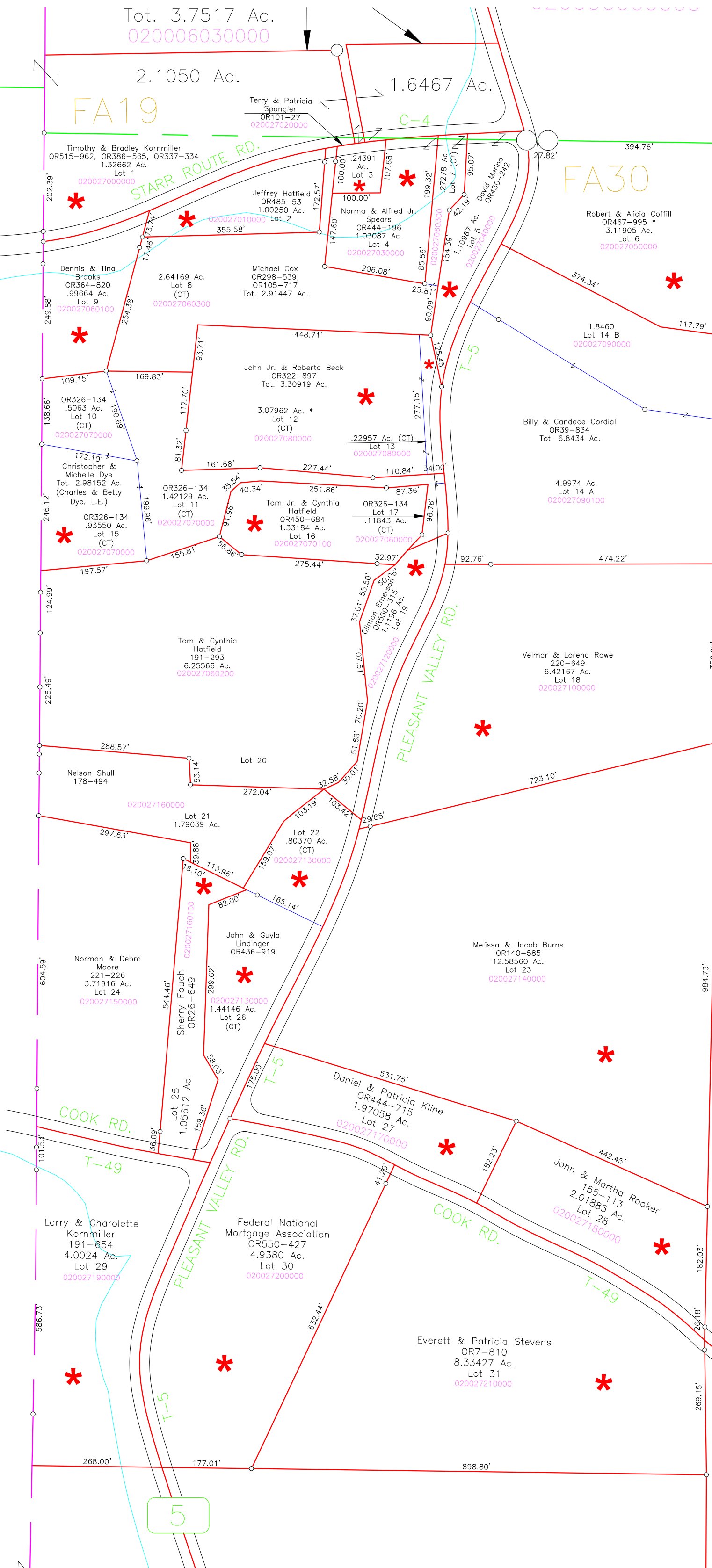


LA12
LA13



4

5

49

211-290
8.50 Ac. (CT)

193-291
5.45 Ac.
020006120000

T14N
T14N
R17W
R17W

David & Nancy
Turner
193-291
4.55 Ac.
020008500000

Michael & Karen Beyer
OR350-583
6.08 Ac.
020008510000
E 1/2 NW Pt.

1.46 Ac.
0200060
1.29 Ac.
0200006
0200006

OR
32.
Frc
0200

Roy Shull Farm
- Lots 1-35
- (fka Plat Book G, pgs. 32, 33
- Plat Cab. 1 pgs. 152 B, 153 A
Revised Lot 14
- Plat Cab. 2, pg. 30

* = Existing tracts prior to the subdivision
and owners did NOT sign the plat.
Many of the tracts prior to the subdivision
were different than the lots as platted.

William Brooks
211-260
70.55 Ac.
E 1/2 NW Pt.
020008490000

William, Seth & Kasey
Warthman
OR400-622