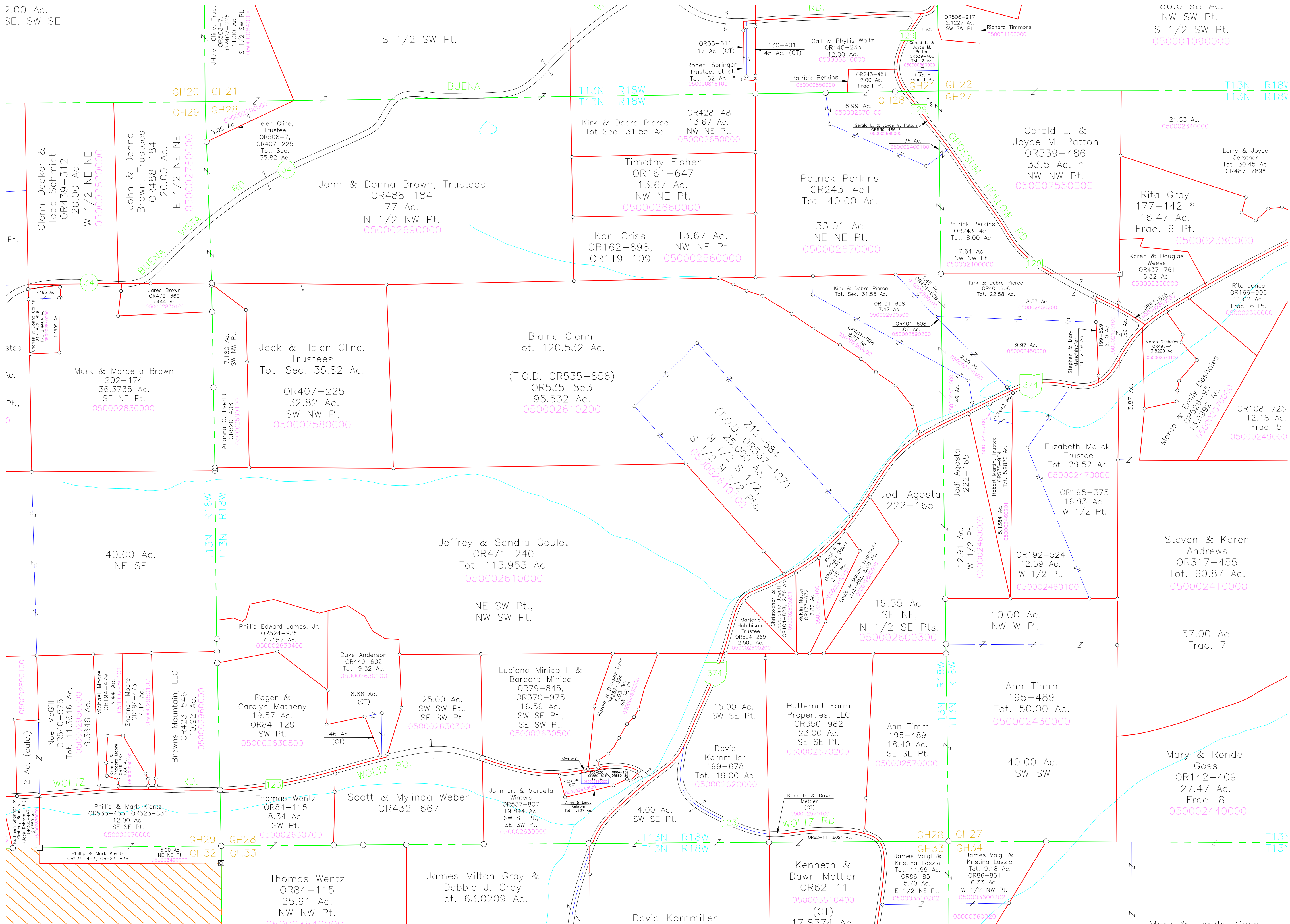


2.00 Ac.
SE, SW SE

00.0190 AC.
NW SW Pt..
S 1/2 SW Pt.
050001090000



S 1/2 SW Pt.

BUENA

T13N R18W
T13N R18W

T13N R18V
T13N R18W

Glenn Decker &
Todd Schmidt
OR439-312
20.00 Ac.
W 1/2 NE NE
050002820000

John & Donna
Brown, Trustees
OR488-184
20.00 Ac.
E 1/2 NE NE
050002780000

John & Donna Brown, Trustees
OR488-184
77 Ac.
N 1/2 NW Pt.
050002690000

Kirk & Debra Pierce
Tot Sec. 31.55 Ac.
OR428-48
13.67 Ac.
NW NE Pt.
050002650000

Timothy Fisher
OR161-647
13.67 Ac.
NW NE Pt.
050002660000

Karl Criss
OR162-898,
OR119-109
13.67 Ac.
NW NE Pt.
050002560000

Patrick Perkins
OR243-451
Tot. 40.00 Ac.
33.01 Ac.
NE NE Pt.
050002670000

Gerald L. &
Joyce M. Patton
OR539-486
33.5 Ac. *
NW NW Pt.
050002550000

Rita Gray
177-142 *
16.47 Ac.
Frac. 6 Pt.
050002380000

Larry & Joyce
Gerstner
Tot. 30.45 Ac.
OR487-789*

Mark & Marcella Brown
202-474
36.3735 Ac.
SE NE Pt.
050002830000

Jack & Helen Cline,
Trustees
Tot. Sec. 35.82 Ac.
OR407-225
32.82 Ac.
SW NW Pt.
050002580000

Blaine Glenn
Tot. 120.532 Ac.
(T.O.D. OR535-856)
OR535-853
95.532 Ac.
050002610200

Jeffrey & Sandra Goulet
OR471-240
Tot. 113.953 Ac.
050002610000

(T.O.D. OR537-127)
212-584
N 1/2 S 1/2
S 1/2 N 1/2 Pts.
050002610100

Jodi Agosta
222-165
12.91 Ac.
W 1/2 Pt.
050002460000

Elizabeth Melick,
Trustee
Tot. 29.52 Ac.
OR195-375
16.93 Ac.
W 1/2 Pt.

Steven & Karen
Andrews
OR317-455
Tot. 60.87 Ac.
050002410000

Phillip Edward James, Jr.
OR524-935
7.2157 Ac.
050002630400

Duke Anderson
OR449-602
Tot. 9.32 Ac.
050002630100

Roger & Carolyn Matheny
OR84-128
19.57 Ac.
SW Pt.
050002630800

25.00 Ac.
SW SW Pt.,
SE SW Pt.
050002630300

Luciano Minico II &
Barbara Minico
OR79-845,
OR370-975
16.59 Ac.
SW SE Pt.,
SE SW Pt.
050002630500

15.00 Ac.
SW SE Pt.

Butternut Farm
Properties, LLC
OR350-982
23.00 Ac.
SE SE Pt.
050002570200

Ann Timm
195-489
18.40 Ac.
SE SE Pt.
050002570000

Ann Timm
195-489
Tot. 50.00 Ac.
050002430000

Mary & Rondel
Goss
OR142-409
27.47 Ac.
Frac. 8
050002440000

Noel McGill
OR540-575
Tot. 11.3646 Ac.
050002950000

Michael Moore
OR194-479
3.44 Ac.
050002950101

Shannon Moore
OR194-473
4.14 Ac.
050002950102

Browns Mountain, LLC
OR423-546
10.92 Ac.
050002960000

8.86 Ac.
(CT)

.46 Ac.
(CT)

Phillip & Mark Kientz
OR535-453, OR523-836
12.00 Ac.
SE SE Pt.
050002970000

Thomas Wentz
OR84-115
8.34 Ac.
SW Pt.
050002630700

Scott & Mylinda Weber
OR432-667

John Jr. & Marcella
Winters
OR537-807
19.844 Ac.
SW SE Pt.,
SE SW Pt.
050002630000

4.00 Ac.
SW SE Pt.

David Kornmiller
199-678
Tot. 19.00 Ac.
050002620000

Kenneth & Dawn
Mettler
(CT)
050002570100

James Vaigl &
Kristina Laszlo
Tot. 11.99 Ac.
OR86-851
5.70 Ac.
E 1/2 NE Pt.
050003510202

James Vaigl &
Kristina Laszlo
Tot. 9.18 Ac.
OR86-851
6.33 Ac.
W 1/2 NW Pt.
050003600202

Phillip & Mark Kientz
OR535-453, OR523-836
5.00 Ac.
NE NE Pt.
050003430000

Thomas Wentz
OR84-115
25.91 Ac.
NW NW Pt.
050002540000

James Milton Gray &
Debbie J. Gray
Tot. 63.0209 Ac.

David Kornmiller
17 8374 Ac.

Kenneth & Dawn
Mettler
OR62-11,
6021 Ac.
(CT)

James Vaigl &
Kristina Laszlo
Tot. 9.18 Ac.
OR86-851
6.33 Ac.
W 1/2 NW Pt.
050003600202

James Vaigl &
Kristina Laszlo
Tot. 9.18 Ac.
OR86-851
6.33 Ac.
W 1/2 NW Pt.
050003600202

Mary & Rondel Goss
OR142-409
27.47 Ac.
Frac. 8
050002440000