

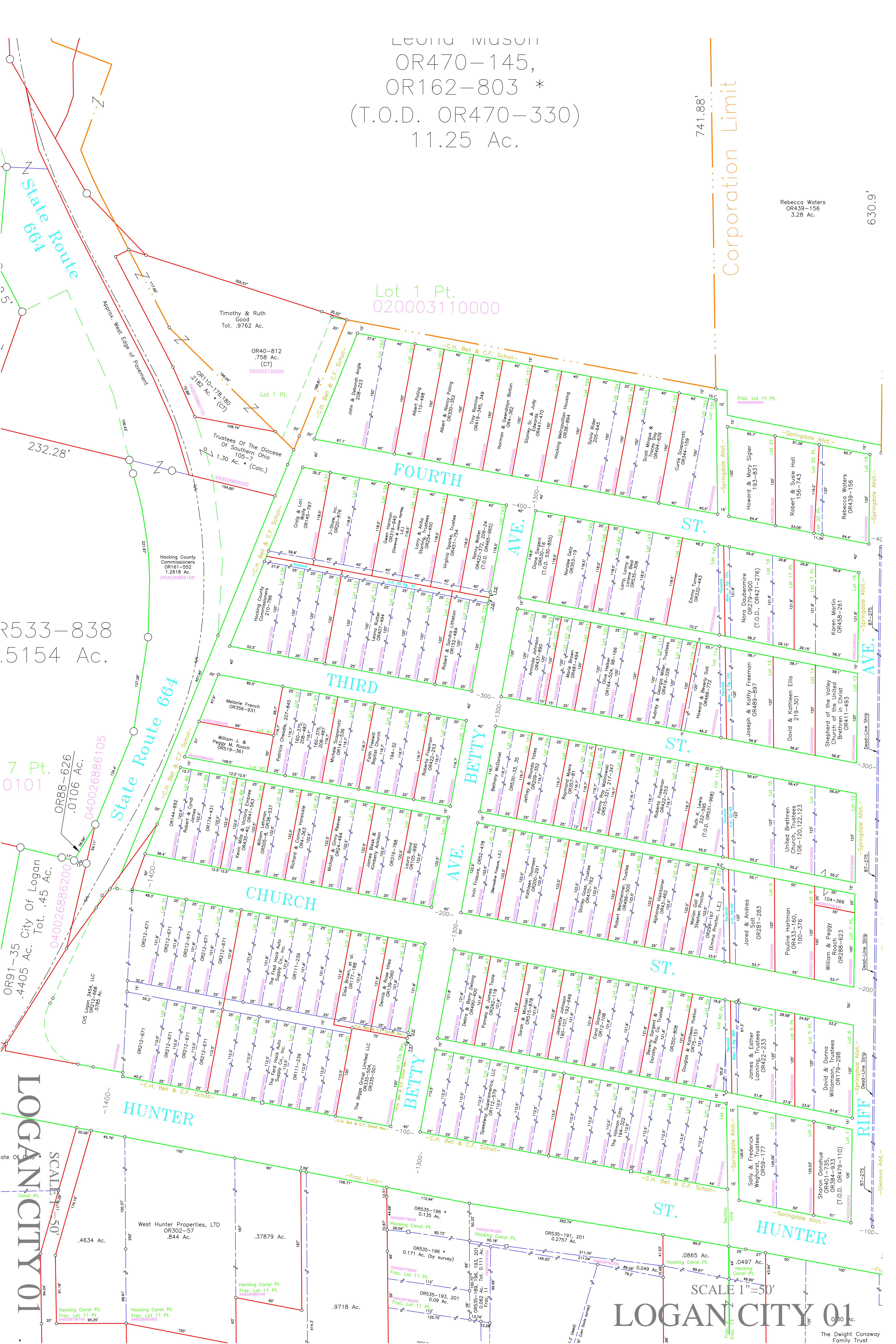
LEONIA MASON
OR470-145,
OR162-803 *
(T.O.D. OR470-330)
11.25 Ac.

741.88'

Corporation Limit

Rebecca Waters
OR439-156
3.28 Ac.

630.9'



Lot 1 Pt.
02000310000

Timothy & Ruth
Good
Tot. .9762 Ac.

OR40-812
.758 Ac.
(CT)
02000310000

OR110-178,180
2.82 Ac. * (C)
04002686000

Trustees Of The Diocese
Of Southern Ohio
105-7
1.30 Ac. * (Calc.)

Hocking County
Commissioners
OR161-552
1.2618 Ac.
04002686106

OR533-838
.5154 Ac.

7 Pt.
0101

OR88-626
.0106 Ac.
04002686105

OR91-35 City Of Logan
.4405 Ac. Tot. .45 Ac.

CVS Logan 3454, LLC
OR12-668
5785 Ac.

West Hunter Properties, LTD
OR302-57
.844 Ac.

3.7879 Ac.

3.7879 Ac.

.9718 Ac.

OR535-196 *
0.135 Ac.

OR535-196 *
0.171 Ac. (by survey)

OR535-193, 201
0.09 Ac.

OR535-184, 201
0.062 Ac. Tot. 0.111 Ac.

OR535-184, 201
0.062 Ac. Tot. 0.111 Ac.

OR535-184, 201
0.062 Ac. Tot. 0.111 Ac.

OR535-184, 201
0.062 Ac. Tot. 0.111 Ac.

OR535-191, 201
0.2757 Ac.

OR535-191, 201
0.2757 Ac.

OR535-191, 201
0.2757 Ac.

OR535-191, 201
0.2757 Ac.

OR535-191, 201
0.2757 Ac.

OR535-191, 201
0.2757 Ac.

OR535-191, 201
0.2757 Ac.

SCALE 1"=50'

LOGAN CITY 01

The Dwight Conway
Family Trust