

SECTION 12

Sec. 12

Sec. 12

SEE SECTION 12

0.166 Ac. (Calc.)
Road R/W, Sec. 12
Outside City of Logan

0.011 Ac. (Calc.)
Road R/W, Sec. 12
Outside City of Logan

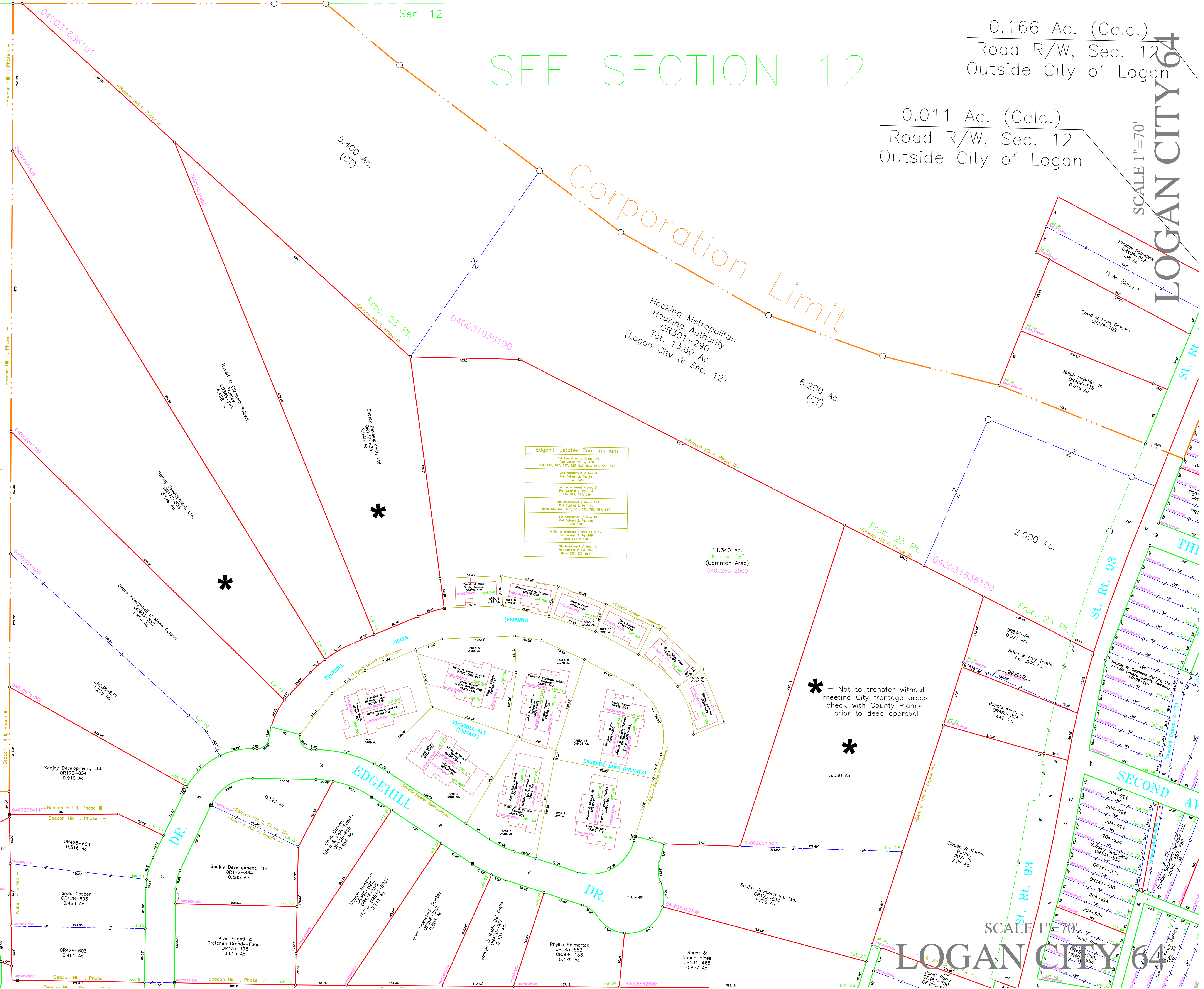
SCALE 1"=70'
LOGAN CITY 64

Corporation Limit

Corporation Limit

limit

DR.



5.400 Ac. (CT)

Hocking Metropolitan Housing Authority
OR301-290
Tot. 13.60 Ac.
(Logan City & Sec. 12)

6.200 Ac. (CT)

2.000 Ac.

11.340 Ac. Reserve "A" (Common Area)
040026542900

* = Not to transfer without meeting City frontage areas, check with County Planner prior to deed approval

*

3.030 Ac.

— Edgemoor Estates Condominium —

1st Amendment / Area 1-3 Plat Cabinet 2, Pg. 114 Units 505, 515, 517, 523, 527, 529, 531, 537, 539
2nd Amendment / Area 4 Plat Cabinet 2, Pg. 121 Unit 545
3rd Amendment / Area 5 Plat Cabinet 2, Pg. 124 Units 518, 522, 522
4th Amendment / Areas 6-9 Plat Cabinet 2, Pg. 128 Units 533, 536, 540, 541, 545, 545, 547, 547
5th Amendment / Area 10 Plat Cabinet 2, Pg. 140 Unit 568
6th Amendment / Areas 11 & 12 Plat Cabinet 2, Pg. 143 Units 554 & 559
7th Amendment / Area 13 Plat Cabinet 2, Pg. 159 Units 557, 579, 581

SCALE 1"=70'

LOGAN CITY 64