

Shane & Angie Thomas  
OR150-213  
Tot. 3.24 Ac.  
150000820100

Larry Azbell, Trustee  
OR488-546  
79.2442 Ac.  
Frac. 2 Pt.  
150001550000

Andrew & Monica DeLong  
Tot. 61.918 Ac.

OR282-823  
50.554 Ac.  
Frac. 3 Pt.  
(Dallas & Wanda DeLong L.E.)  
150001500100

Brown (62-761)  
1.3 Ac. Pt.  
150001560000

Frac. 2 Pt.  
150001530000

OR227-122  
23.5 Ac.  
SE Pt.  
150001480000

Raymond & Elizabeth Vining  
OR79-314  
Tot. 18.358 Ac.  
150002450700

Timothy & Stacy Roark  
OR227-122  
20.1542 Ac.  
N 1/2 Pt.  
150002450200

214-537  
11.364 Ac.  
Frac. 3 Pt.  
150001500101

Barry Fee  
OR172-166  
4.890 Ac.  
150001500200

Roy & Jessie Fee  
Tot. 71.762 Ac.  
150001500000

194-857, 860  
64.192 Ac.  
Frac. 3 Pt.

Dalton DeLong  
OR331-534  
44.65 Ac.  
Frac. 4 Pt.  
150001510000

David Milligan  
Tot. 10.0418 Ac.  
150002470000

Robert Culbertson  
Tot. 10.0159 Ac.  
150001440000

Whitney Culbertson  
OR443-689 \*  
8.02 Ac.  
Frac. 4 Pt.  
150001440400

Tony & Tera Culbertson  
OR301-198  
Tot. Sec. 31.00 Ac.  
Frac. 4 Pt.  
150001440000

6.00 Ac.  
Frac. 4 Pt.

Dalton DeLong  
OR331-534  
44.65 Ac.  
Frac. 4 Pt.  
150001510000

Evelyn & Lora Jarvis  
OR367-41  
.30 Ac.  
Frac. 4 Pt.  
150002410000

Nichols & Shaelyn Hart  
OR545-346  
150002470000

Dalton DeLong  
OR331-534 \*  
Tot. 144.35 Ac.  
150001700000

143.85 Ac.  
NW Pt.

Laurelville Grain Management, LLC  
OR485-199  
Tot. 37.4584 Ac.  
150001770000

36.9584 Ac.  
SW Pt.

50.0482 Ac.  
SW Pt.  
150001750101

Moccasin Valley Farms, LLC  
OR528-233  
Tot. 63.7982 Ac.

David Pritchard  
OR421-302  
18.07 Ac.  
SW Pt.  
150001750100

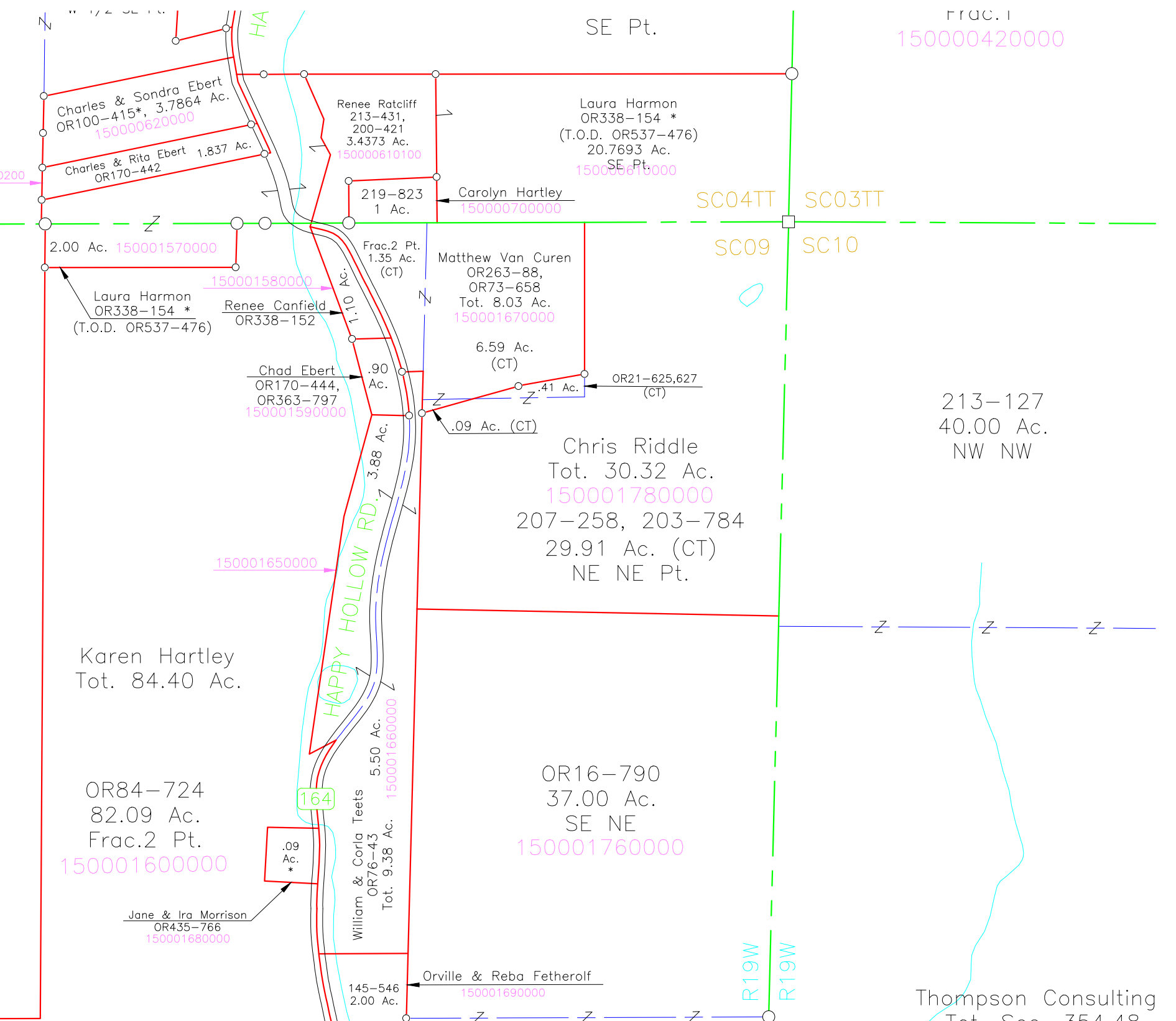
40.00 Ac.  
SE SW

T11N R19W  
T11N R19W

13.75 Ac.  
Frac. 3 Pt.  
150001740000

6.054 Ac.  
150002450700

Raymond & Elizabeth Vining  
OR79-314  
Tot. 18.358 Ac.



Charles & Sandra Ebert  
OR100-415\*, 3.7864 Ac.  
150000620000

Charles & Rita Ebert  
OR170-442  
1.837 Ac.  
150000620000

Laura Harmon  
OR338-154 \*  
(T.O.D. OR537-476)

2.00 Ac.  
150001570000

Karen Hartley  
Tot. 84.40 Ac.

OR84-724  
82.09 Ac.  
Frac. 2 Pt.  
150001600000

Jane & Ira Morrison  
OR435-766  
150001650000

OR84-724  
.35 Ac.  
150001600000

Rhonda Hupp  
OR485-197  
6.105 Ac.  
150001770000

OR84-724  
1.00 Ac.  
150001600000

OR488-521  
OR493-918  
1.084 Ac.  
150001600000

OR488-521  
OR493-918  
1.084 Ac.  
150001600000

OR488-521  
OR493-918  
1.084 Ac.  
150001600000

OR488-521  
OR493-918  
1.084 Ac.  
150001600000

OR488-521  
OR493-918  
1.084 Ac.  
150001600000

OR488-521  
OR493-918  
1.084 Ac.  
150001600000

OR488-521  
OR493-918  
1.084 Ac.  
150001600000

OR488-521  
OR493-918  
1.084 Ac.  
150001600000

OR488-521  
OR493-918  
1.084 Ac.  
150001600000

Charles & Sandra Ebert  
OR100-415\*, 3.7864 Ac.  
150000620000

Charles & Rita Ebert  
OR170-442  
1.837 Ac.  
150000620000

Laura Harmon  
OR338-154 \*  
(T.O.D. OR537-476)

2.00 Ac.  
150001570000

Laura Harmon  
OR338-154 \*  
(T.O.D. OR537-476)

OR84-724  
82.09 Ac.  
Frac. 2 Pt.  
150001600000

Jane & Ira Morrison  
OR435-766  
150001650000

OR84-724  
.35 Ac.  
150001600000

Rhonda Hupp  
OR485-197  
6.105 Ac.  
150001770000

OR84-724  
1.00 Ac.  
150001600000

OR488-521  
OR493-918  
1.084 Ac.  
150001600000

OR488-521  
OR493-918  
1.084 Ac.  
150001600000

OR488-521  
OR493-918  
1.084 Ac.  
150001600000

OR488-521  
OR493-918  
1.084 Ac.  
150001600000

OR488-521  
OR493-918  
1.084 Ac.  
150001600000

OR488-521  
OR493-918  
1.084 Ac.  
150001600000

OR488-521  
OR493-918  
1.084 Ac.  
150001600000

OR488-521  
OR493-918  
1.084 Ac.  
150001600000

OR488-521  
OR493-918  
1.084 Ac.  
150001600000

OR488-521  
OR493-918  
1.084 Ac.  
150001600000

OR488-521  
OR493-918  
1.084 Ac.  
150001600000

OR488-521  
OR493-918  
1.084 Ac.  
150001600000

OR488-521  
OR493-918  
1.084 Ac.  
150001600000

SE Pt.  
150000420000

Charles & Sandra Ebert  
OR100-415\*, 3.7864 Ac.  
150000620000

Charles & Rita Ebert  
OR170-442  
1.837 Ac.  
150000620000

Laura Harmon  
OR338-154 \*  
(T.O.D. OR537-476)

2.00 Ac.  
150001570000

Laura Harmon  
OR338-154 \*  
(T.O.D. OR537-476)

OR84-724  
82.09 Ac.  
Frac. 2 Pt.  
150001600000

Jane & Ira Morrison  
OR435-766  
150001650000

OR84-724  
.35 Ac.  
150001600000

Rhonda Hupp  
OR485-197  
6.105 Ac.  
150001770000

OR84-724  
1.00 Ac.  
150001600000

OR488-521  
OR493-918  
1.084 Ac.  
150001600000

OR488-521  
OR493-918  
1.084 Ac.  
150001600000

OR488-521  
OR493-918  
1.084 Ac.  
150001600000

OR488-521  
OR493-918  
1.084 Ac.  
150001600000

OR488-521  
OR493-918  
1.084 Ac.  
150001600000

OR488-521  
OR493-918  
1.084 Ac.  
150001600000

OR488-521  
OR493-918  
1.084 Ac.  
150001600000

OR488-521  
OR493-918  
1.084 Ac.  
150001600000

OR488-521  
OR493-918  
1.084 Ac.  
150001600000

OR488-521  
OR493-918  
1.084 Ac.  
150001600000

OR488-521  
OR493-918  
1.084 Ac.  
150001600000

OR488-521  
OR493-918  
1.084 Ac.  
150001600000

SE Pt.  
150000420000

Charles & Sandra Ebert  
OR100-415\*, 3.7864 Ac.  
150000620000

Charles & Rita Ebert  
OR170-442  
1.837 Ac.  
150000620000

Laura Harmon  
OR338-154 \*  
(T.O.D. OR537-476)

2.00 Ac.  
150001570000

Laura Harmon  
OR338-154 \*  
(T.O.D. OR537-476)

OR84-724  
82.09 Ac.  
Frac. 2 Pt.  
150001600000

Jane & Ira Morrison  
OR435-766  
150001650000

OR84-724  
.35 Ac.  
150001600000

Rhonda Hupp  
OR485-197  
6.105 Ac.  
150001770000

OR84-724  
1.00 Ac.  
150001600000

OR488-521  
OR493-918  
1.084 Ac.  
150001600000

OR488-521  
OR493-918  
1.084 Ac.  
150001600000

OR488-521  
OR493-918  
1.084 Ac.  
150001600000

OR488-521  
OR493-918  
1.084 Ac.  
150001600000

OR488-521  
OR493-918  
1.084 Ac.  
150001600000

OR488-521  
OR493-918  
1.084 Ac.  
150001600000

OR488-521  
OR493-918  
1.084 Ac.  
150001600000

OR488-521  
OR493-918  
1.084 Ac.  
150001600000

OR488-521  
OR493-918  
1.084 Ac.  
150001600000

OR488-521  
OR493-918  
1.084 Ac.  
150001600000

OR488-521  
OR493-918  
1.084 Ac.  
150001600000

OR488-521  
OR493-918  
1.084 Ac.  
150001600000

SE Pt.  
150000420000

Charles & Sandra Ebert  
OR100-415\*, 3.7864 Ac.  
150000620000

Charles & Rita Ebert  
OR170-442  
1.837 Ac.  
150000620000

Laura Harmon  
OR338-154 \*  
(T.O.D. OR537-476)

2.00 Ac.  
150001570000

Laura Harmon  
OR338-154 \*  
(T.O.D. OR537-476)

OR84-724  
82.09 Ac.  
Frac. 2 Pt.  
150001600000

Jane & Ira Morrison  
OR435-766  
150001650000

OR84-724  
.35 Ac.  
150001600000

Rhonda Hupp  
OR485-197  
6.105 Ac.  
150001770000

OR84-724  
1.00 Ac.  
150001600000

OR488-521  
OR493-918  
1.084 Ac.  
150001600000

OR488-521  
OR493-918  
1.084 Ac.  
150001600000

OR488-521  
OR493-918  
1.084 Ac.  
150001600000

OR488-521  
OR493-918  
1.084 Ac.  
150001600000

OR488-521  
OR493-918  
1.084 Ac.  
150001600000

OR488-521  
OR493-918  
1.084 Ac.  
150001600000

OR488-521  
OR493-918  
1.084 Ac.  
150001600000

OR488-521  
OR493-918  
1.084 Ac.  
150001600000

OR488-521  
OR493-918  
1.084 Ac.  
150001600000

OR488-521  
OR493-918  
1.084 Ac.  
150001600000

OR488-521  
OR493-918  
1.084 Ac.  
150001600000

OR488-521  
OR493-918  
1.084 Ac.  
150001600000