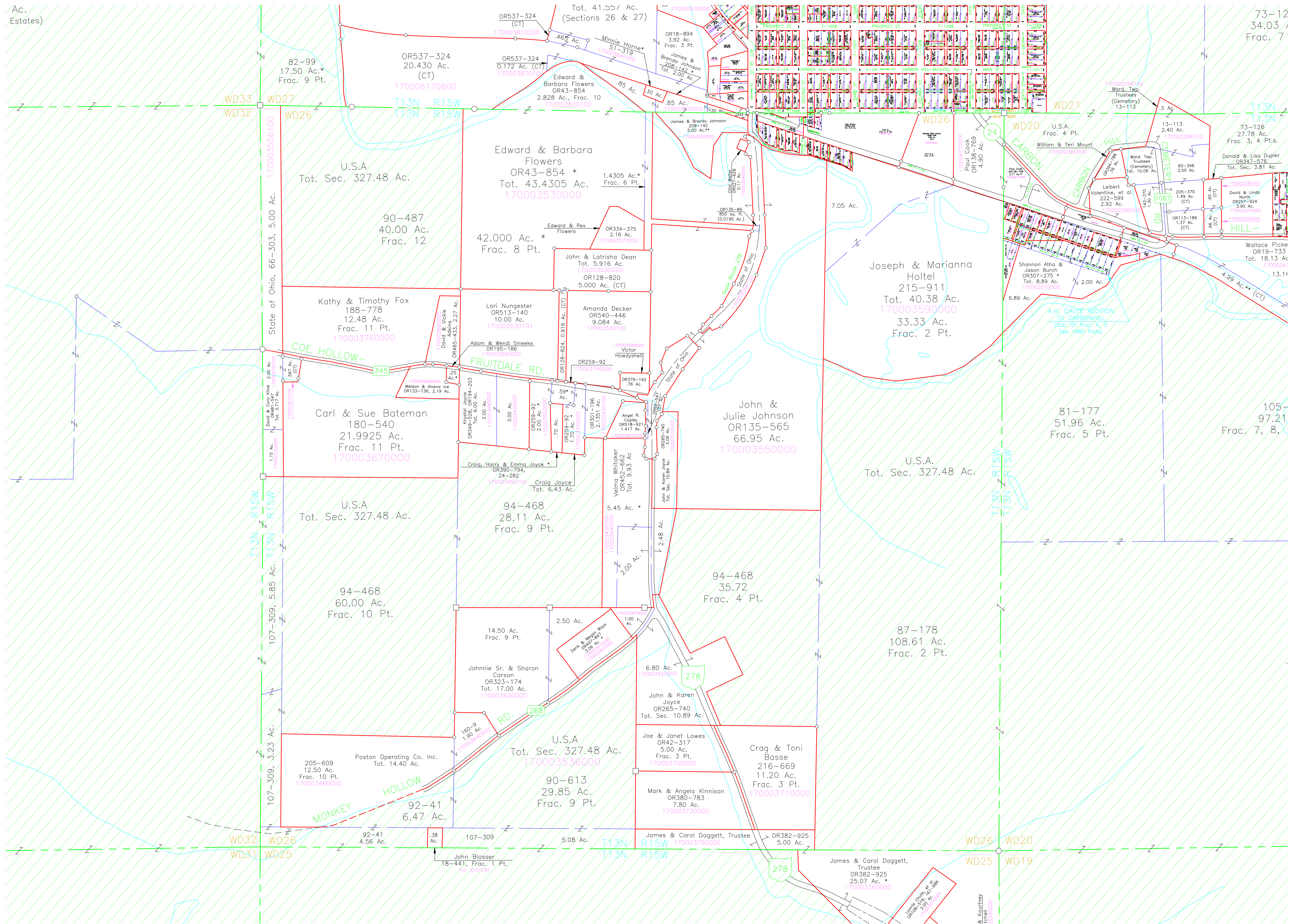


Ac. Estates)

73-12  
34.03 /  
Frac. 7



105-  
97.21  
Frac. 7, 8,

U.S.A.  
Tot. Sec. 327.48 Ac.

U.S.A.  
Tot. Sec. 327.48 Ac.

Poston Operating Co. Inc.  
205-609  
12.50 Ac.  
Frac. 10 Pt.  
170003460000

U.S.A.  
Tot. Sec. 327.48 Ac.  
170003336000

94-468  
35.72  
Frac. 4 Pt.

87-178  
108.61 Ac.  
Frac. 2 Pt.

94-468  
60.00 Ac.  
Frac. 10 Pt.

94-468  
28.11 Ac.  
Frac. 9 Pt.

Carl & Sue Bateman  
180-540  
21.9925 Ac.  
Frac. 11 Pt.  
170003670000

Craig Joyce  
OR390-794,  
24-282  
170003450109

Veilma Whitaker  
OR452-662  
Tot. 9.93 Ac.  
170003400000

John & Julie Johnson  
OR135-565  
66.95 Ac.  
170003550000

Joseph & Marianna  
Holtel  
215-911  
Tot. 40.38 Ac.  
33.33 Ac.  
Frac. 2 Pt.  
170003590000

81-177  
51.96 Ac.  
Frac. 5 Pt.

Lori Nungster  
OR153-140  
10.00 Ac.  
170003530101

John & Latrisha Dean  
Tot. 5.916 Ac.  
OR128-820  
5.000 Ac. (CT)  
170003530200

Edward & Barbara Flowers  
OR43-854 \*  
Tot. 43.4305 Ac.  
170003530000

OR537-324  
20.430 Ac.  
(CT)  
170006170600

Tot. 41.55 / Ac.  
(Sections 26 & 27)  
Minnie Horne \*  
57-319  
170003540000

OR18-894  
3.92 Ac.  
Frac. 3 Pt.  
James & Brenda Johnson  
208-142  
Tot. 2.00 Ac.  
170003520000

Loise Clarke, et al.  
Office 250 E. 4th St.  
170003360000

& Courtney  
tchell  
170003360000