

T14N  
T14N

36.000 Ac. NW Pt.  
020007860203  
Clare Aitken, Trustee  
OR487-373  
Tot. 70.5826 Ac.

DEERFIELD FARMS SUB.  
SECTION 1  
Lots 1-22  
Plat Cabinet 1-  
Pgs. 171 B, 172 A, B  
SECTION 2  
Lots 23-35  
Plat Cabinet 1-  
Pgs. 190 B, 191 A  
SECTION 3  
Lots 36-59  
Plat Cabinet 1-  
Pgs. 194 A, B

7.7544 Ac. (CT)  
020007860202

Julie Molnar  
OR446-141,  
OR214-400 \*  
Tot. 11.28 Ac.  
020007900000

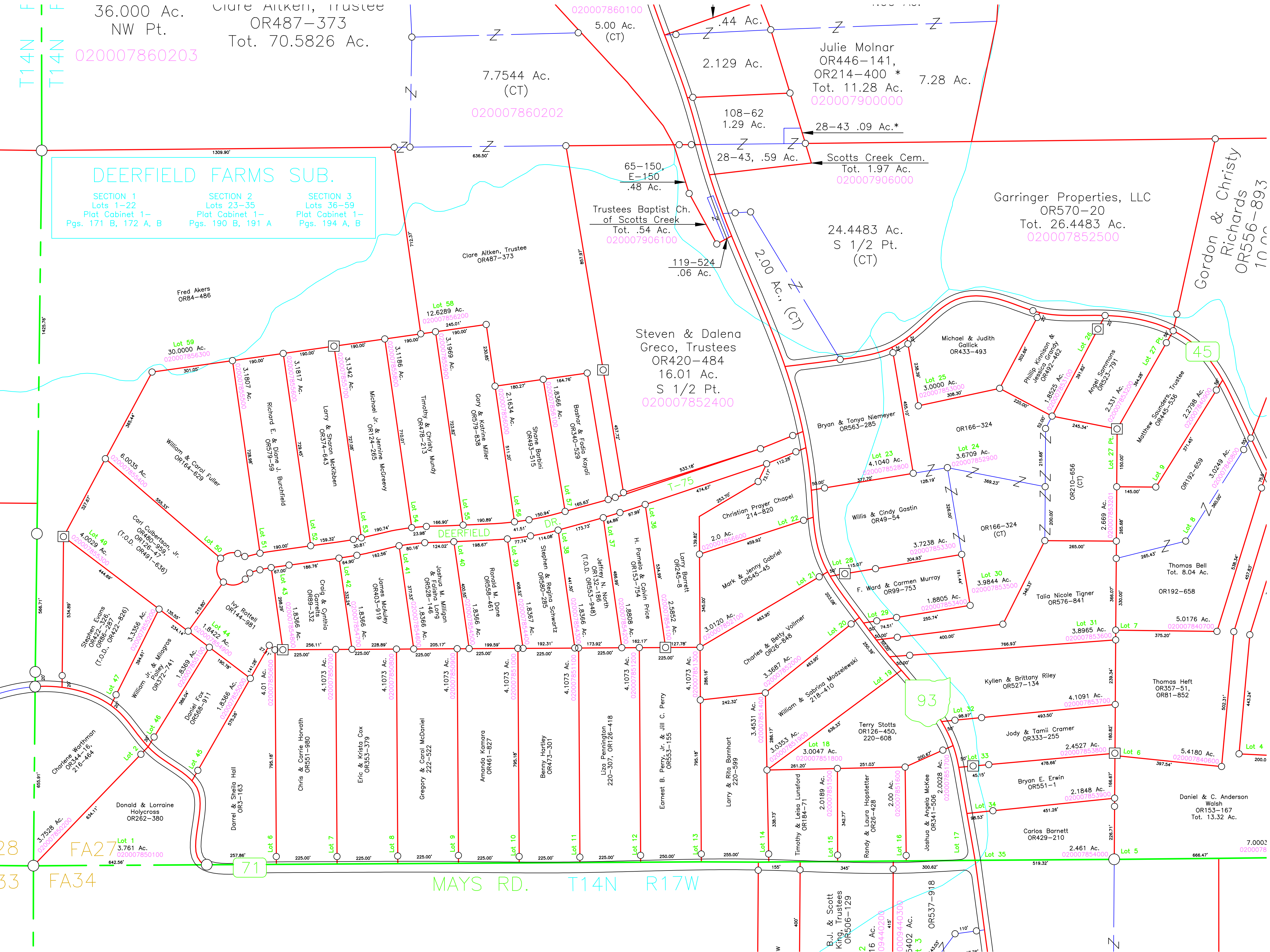
Trustees Baptist Ch.  
of Scotts Creek  
Tot. .54 Ac.  
020007906100

24.4483 Ac.  
S 1/2 Pt. (CT)

Garringer Properties, LLC  
OR570-20  
Tot. 26.4483 Ac.  
020007852500

Gordon & Christy  
Richards  
OR556-89.3  
10 ac

Steven & Dalena  
Greco, Trustees  
OR420-484  
16.01 Ac.  
S 1/2 Pt.  
020007852400



28  
33  
FA27  
FA34

MAYS RD. T14N R17W

71

93

45

Lot 7

Lot 6

Lot 5

Lot 4

Lot 9

Lot 8

Lot 27

Lot 26

Lot 25

Lot 24

Lot 23

Lot 22

Lot 21

Lot 20

Lot 19

Lot 18

Lot 17

Lot 16

Lot 15

Lot 14

Lot 13

Lot 12

Lot 11

Lot 10

Lot 9

Lot 8

Lot 7

Lot 6

Lot 5

Lot 4

Lot 3

Lot 2

Lot 1