

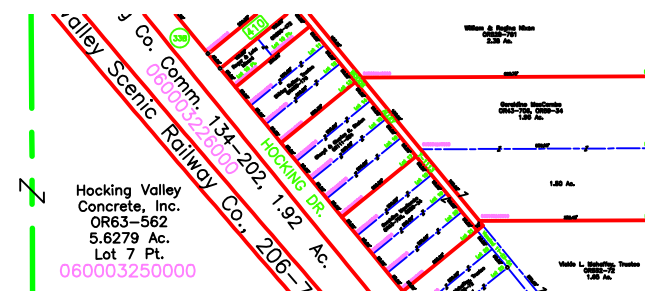
209-641  
49.37 Ac.  
Frac. 4, 6 Pts.  
060005300000

OR249-901  
33.13 Ac.  
060005510000

59.72 Ac.  
Frac. 6 Pt.  
060004430000

OR63-562  
23.93 Ac.  
Frac. 7 Pt.  
060004290100

OR63-562  
27.6155 Ac.  
Frac.s 7, 11 Pt.  
060004290000



Hocking Valley  
Concrete, Inc.  
OR63-562  
9.3274 Ac.  
060003910000

Hocking Valley  
Concrete, Inc.  
OR63-562  
19.7366 Ac.  
Frac. 7 Pt.  
060003220000

Joy Light  
OR281-154  
72.31 Ac. (Calc.)  
060005220000

Jeffrey Smith  
Tot. 2.49131 Ac.  
060005220100

Joy Light  
OR281-154  
18.17 Ac. (Calc.)  
060004020000

182-105  
43.41 Ac.  
060005280000

Judy Clark  
OR107-173,  
OR34-111,  
206-344  
15.64 Ac.  
060004080000

United Methodist Church  
West Ohio Camping  
and Conference Committee  
131-431 \*  
144.71 Ac.  
060004170000

131-431 \*  
164.00 Ac.  
060005286000

United Methodist Church West Ohio  
Camping and Conference Committee  
Tot. 322.41 Ac.

Scioto Land Company, LLC  
OR354-111  
157.30 Ac. \*  
SE Pt.  
060003940000

Charles & Alice  
Clark  
133-429  
55.86 Ac.  
Frac. 7 Pt.  
060003200000

Kilbarger Solid W  
OR313-9  
Tot. Sec. :  
Frac. 4,  
060003

Marlene Mount  
OR123-664,  
OR518-431,  
(TOD OR518-548)  
1.00 Ac.  
060003380000

David & Catherine  
McDaniel  
140-55  
8.11 Ac.  
060003380000

Nikki Acker  
OR476-281  
2.589 Ac.  
060003380000

215-746  
2.50 Ac.  
060003380000

215-780  
7.00 Ac.  
060003380000

Tessa Phillips  
OR180-436  
6.517 Ac.  
060003770200

Raymond &  
Irma Spaeth  
207-96  
2.30 Ac.\*  
060003850000

Stephen Scoggs  
OR73-937  
OR90-929  
060003870000

Calvin Fisher  
OR146-553  
.72 Ac.  
060003850000

Kyle & Heather  
Nemeth  
OR470-590  
2.6846 Ac.  
060003850000

Timothy & Nita  
Daugherty  
OR456-955 \*  
Tot. 9.28 Ac.  
060003000000

U.S.A.  
140-222  
107.56 Ac.  
Frac. 2, 4 Pt.  
060003000000

