

SECTION 12

Sec. 12

Sec. 12

SEE SECTION 12

0.166 Ac. (Calc.)
Road R/W, Sec. 12
Outside City of Logan

0.011 Ac. (Calc.)
Road R/W, Sec. 12
Outside City of Logan

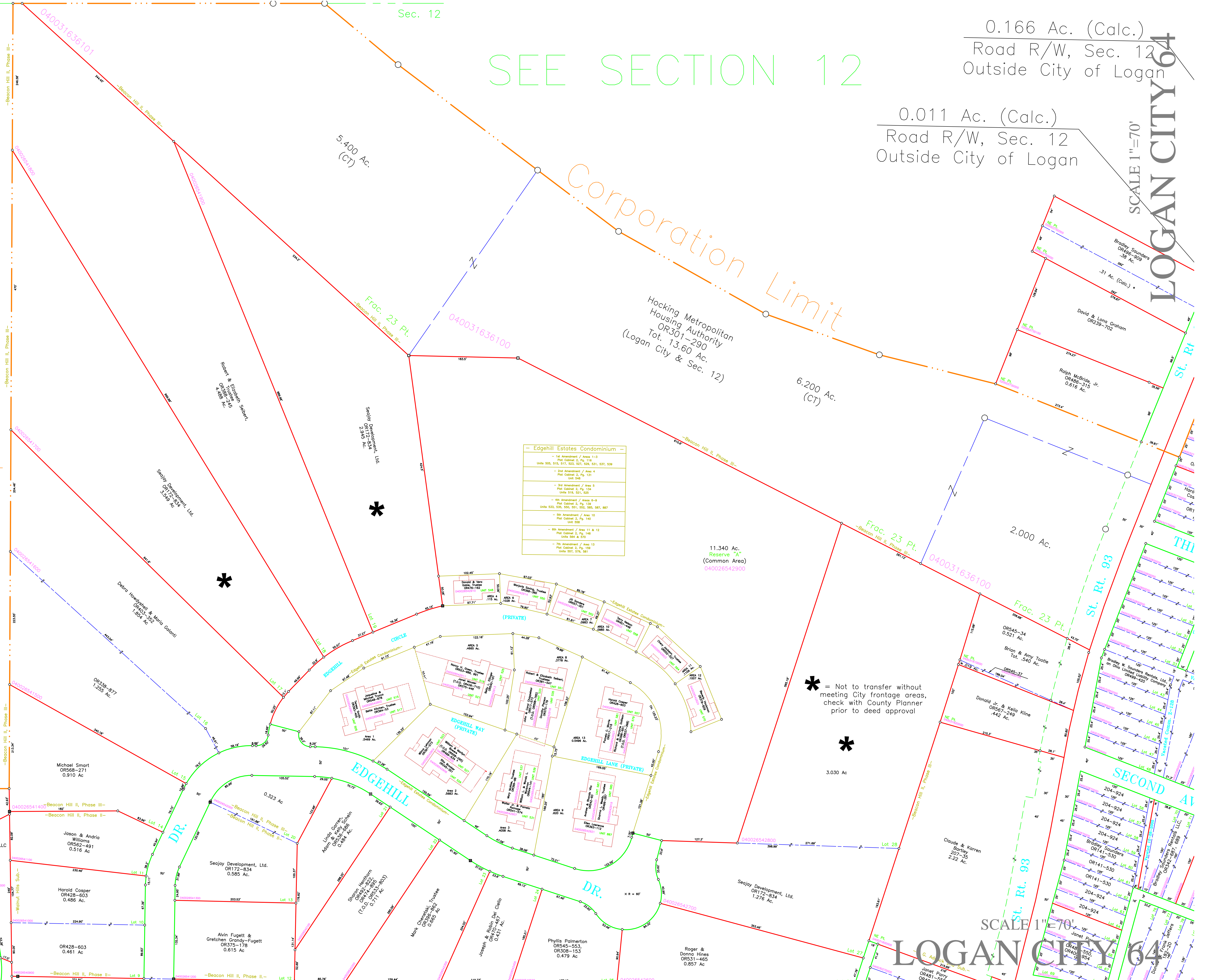
SCALE 1"=70'
LOGAN CITY 64

Corporation Limit

Corporation Limit

limit

DR.



— Edgehill Estates Condominium —

| |
|--|
| 1st Amendment / Area 1-3 Plat Cabinet 2, Pg. 114 Units 505, 515, 517, 523, 527, 529, 531, 537, 539 |
| 2nd Amendment / Area 4 Plat Cabinet 2, Pg. 121 Unit 545 |
| 3rd Amendment / Area 5 Plat Cabinet 2, Pg. 124 Units 518, 522, 522 |
| 4th Amendment / Areas 6-9 Plat Cabinet 2, Pg. 128 Units 533, 536, 540, 541, 545, 545, 547, 547 |
| 5th Amendment / Area 10 Plat Cabinet 2, Pg. 140 Unit 568 |
| 6th Amendment / Areas 11 & 12 Plat Cabinet 2, Pg. 143 Units 554 & 559 |
| 7th Amendment / Area 13 Plat Cabinet 2, Pg. 159 Units 557, 579, 581 |

* = Not to transfer without meeting City frontage areas, check with County Planner prior to deed approval

*

SCALE 1"=70'
LOGAN CITY 64