

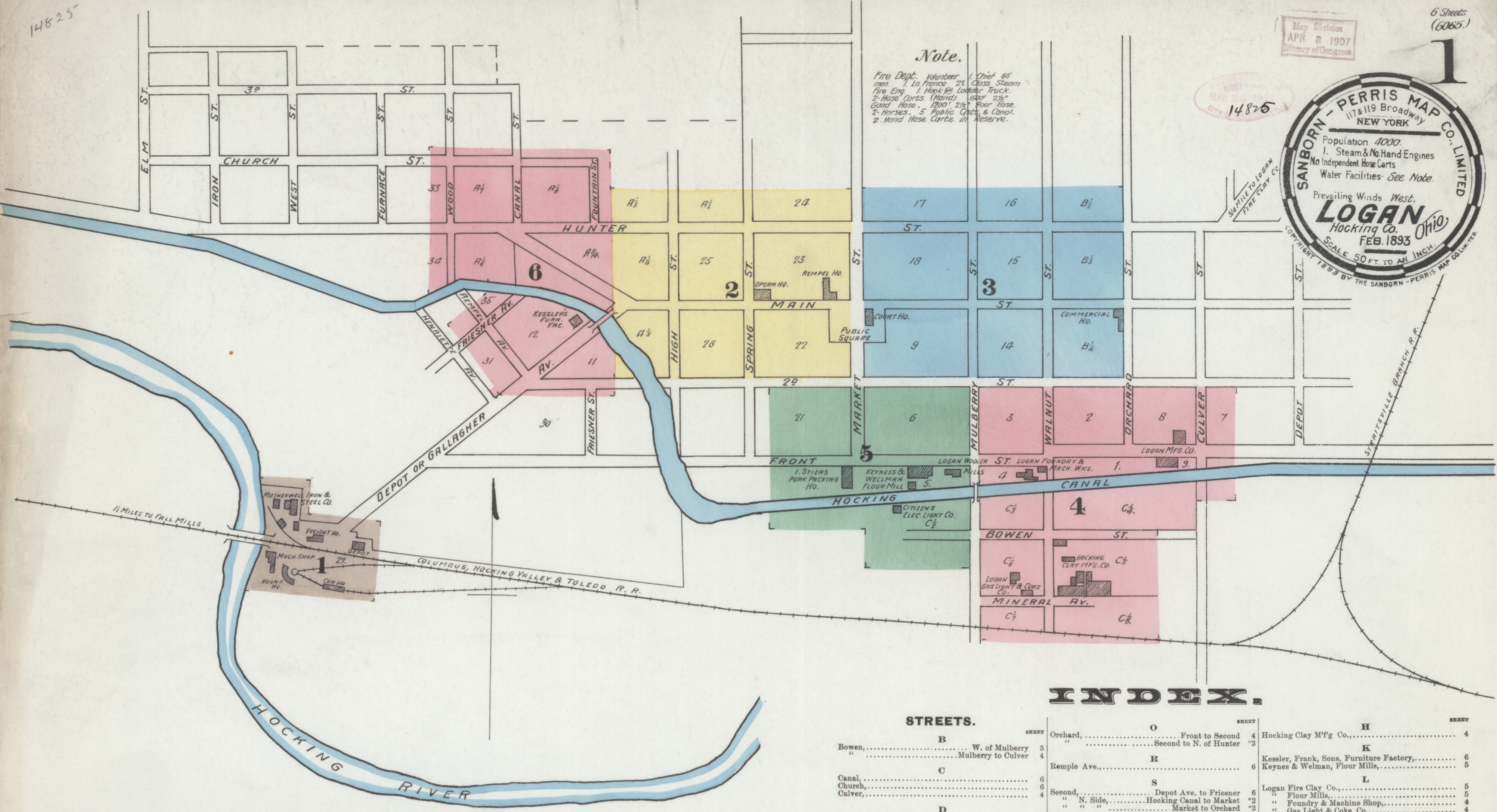
14825

Map Division  
APR 6 1907  
Library of Congress

6 Sheets  
(6065.)



Note.  
Fire Dept. Volunteer Chief 65  
men 1 to France 25 Class Steam  
Fire Eng. 1 Hoop & Ladder Truck  
2 Hose Carts (Hand) 100' 2 1/2"  
Good Hose 100' 2 1/2" Four Hose  
2 Hoses - 5 Public Carts & Condit.  
2 Hand Hose Carts. 1/4 Reserve.



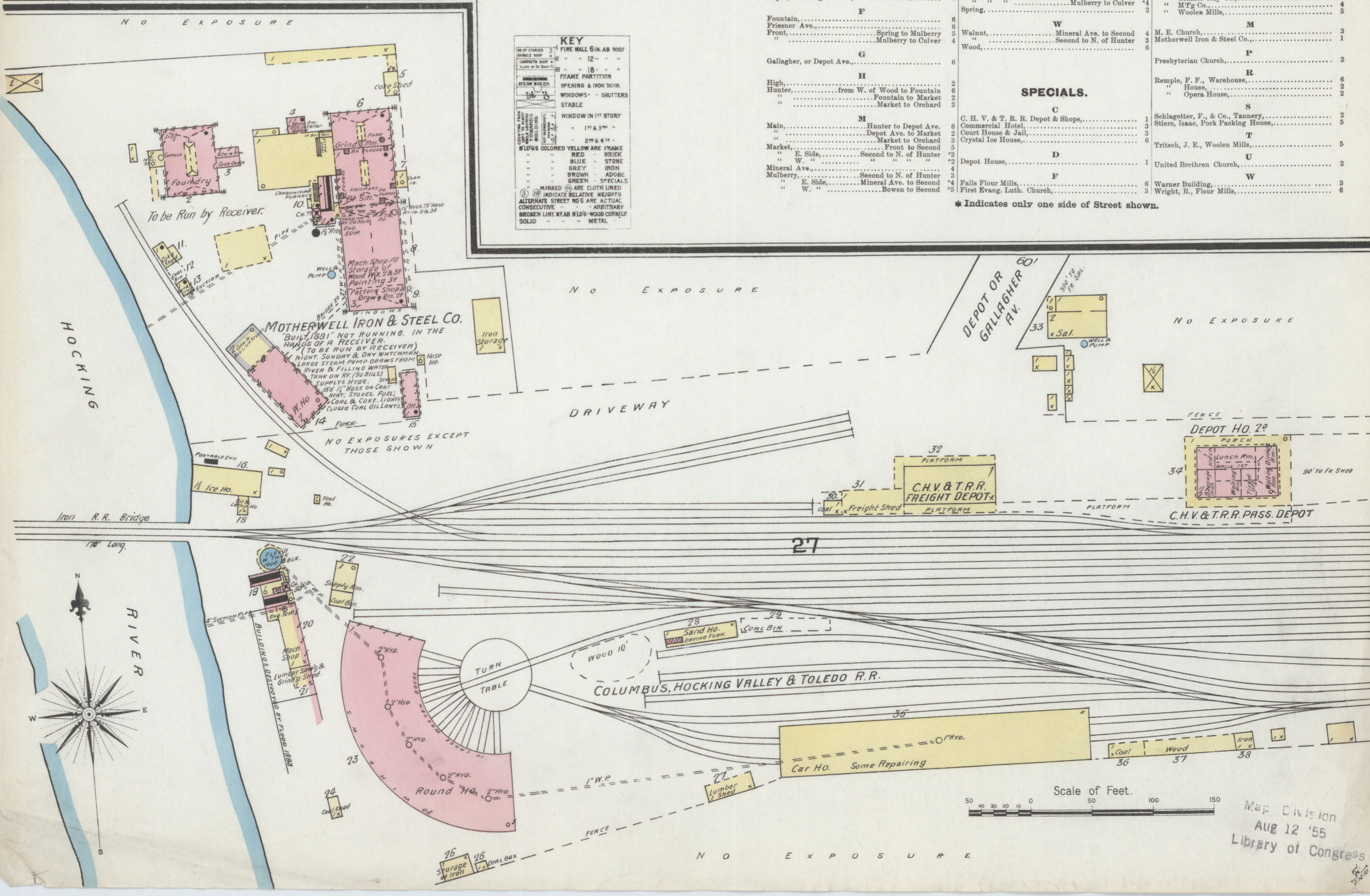
### INDEX.

STREETS.	NUMBER	PROPERTY	NUMBER
Bowen, ..... W. of Mulberry	5	Hocking Clay Mfg Co.	4
Canal, .....	6	Kessler, Frank, Sons, Furniture Factory,	6
Church, .....	4	Keynes & Welman, Flour Mills,	5
Depot, or Gallagher Ave., .....	6	Logan Fire Clay Co.,	5
Fountain, .....	6	" Flour Mills,	5
Front, .....	5	" Foundry & Machine Shop,	4
Gallagher, or Depot Ave., .....	6	" Gas Light & Coke Co.,	4
High, .....	2	" Mfg Co.,	5
Hunter, .....	6	" Woolen Mills,	5
Main, .....	6	M. E. Church,	3
Market, .....	5	Motherwell Iron & Steel Co.,	1
Mulberry, .....	4	Presbyterian Church,	2
Mineral Ave., .....	4	Remple, F. F., Warehouse,	6
Spring, .....	2	" House,	2
Walnut, .....	4	" Opera House,	2
Wood, .....	6	Schlagger, F. & Co., Tannery,	2

SPECIALS.	NUMBER	PROPERTY	NUMBER
Commercial Hotel, .....	3	Stiers, Isaac, Pork Packing House,	5
Crystal Ice House, .....	6	Tritsch, J. E., Woolen Mills,	5
Depot House, .....	1	United Brethren Church,	2
Falls Flour Mills, .....	6	Warner Building,	3
First Evang. Luth. Church, .....	3	Wright, R., Flour Mills,	6

\* Indicates only one side of Street shown.



Map Division  
Aug 12 '55  
Library of Congress