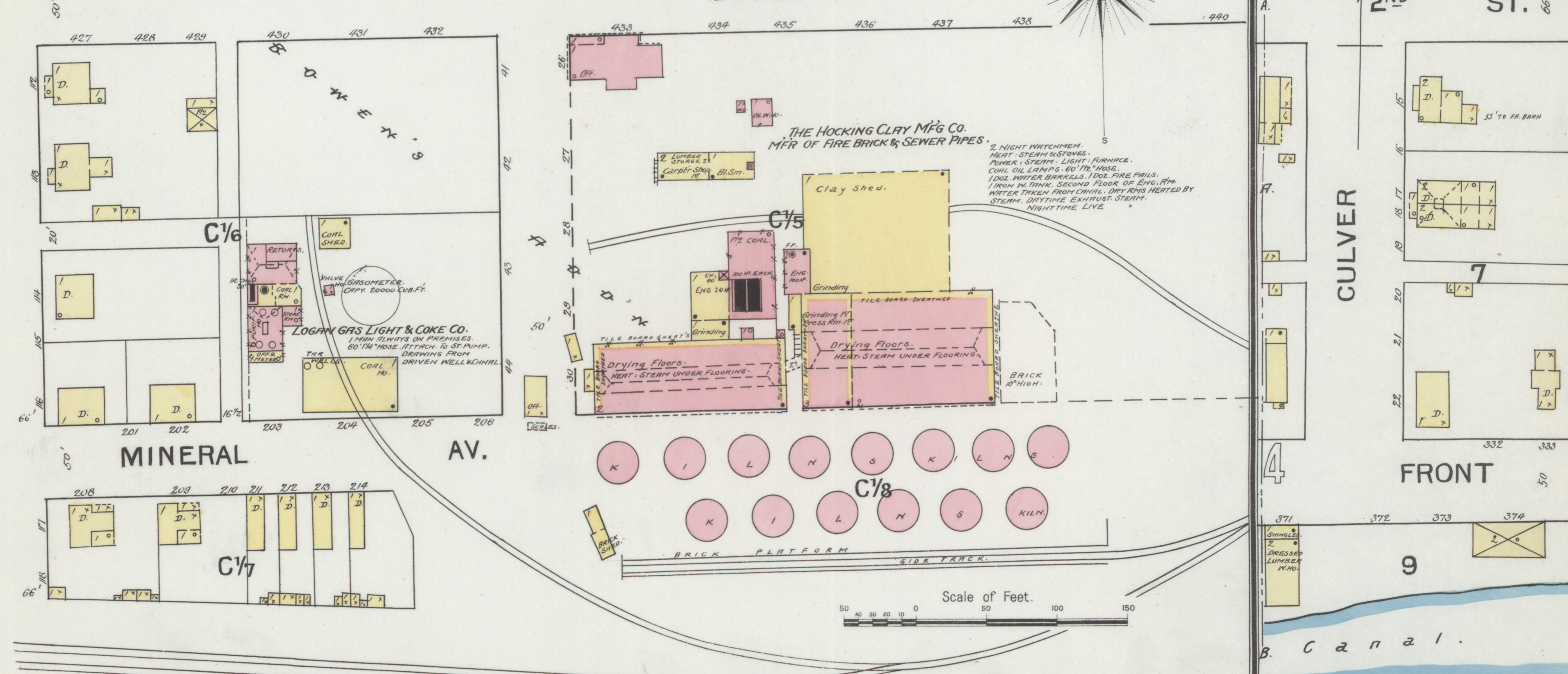
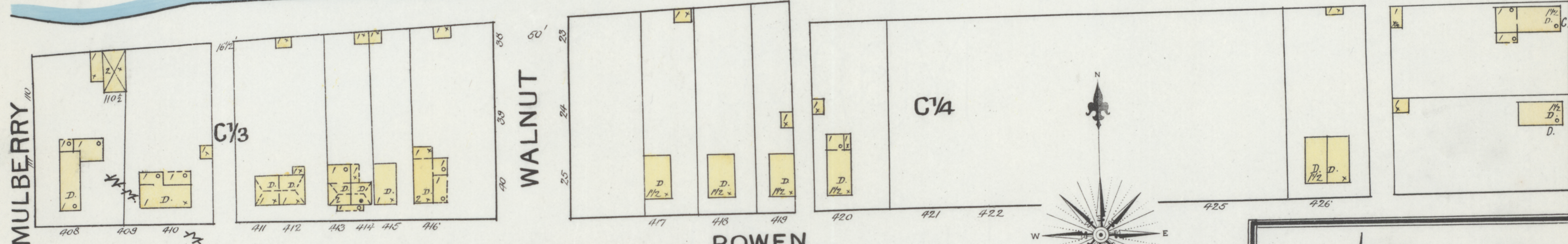
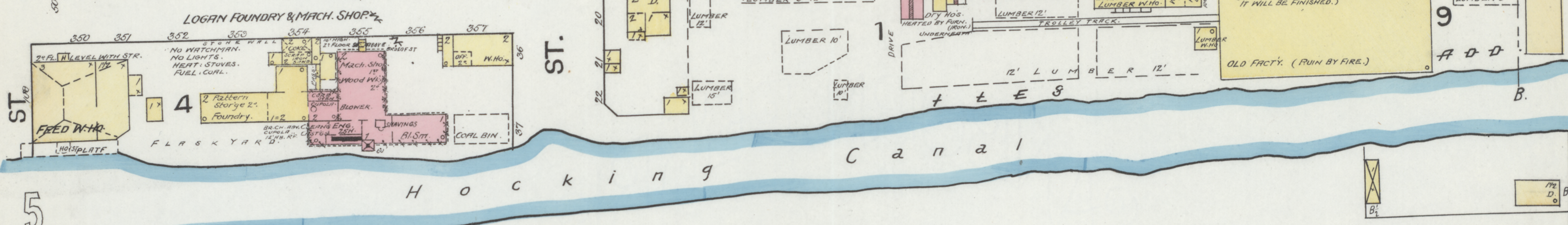
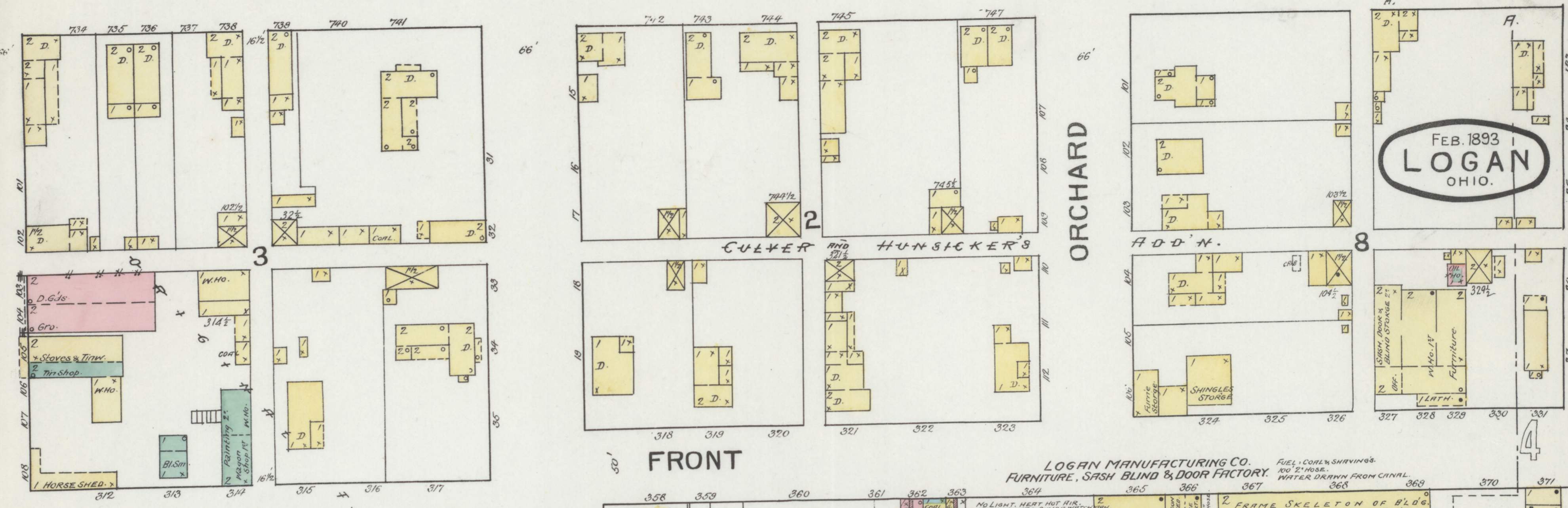


2ND ST.



FEB. 1893  
**LOGAN**  
 OHIO.

LOGAN MANUFACTURING CO.  
 FURNITURE, SASH BLIND & DOOR FACTORY.  
 FUEL, COALS, SHAVINGS, NO. 21 HOSE, WATER DRAWN FROM CANAL.

THE HOCKING CLAY MFG CO.  
 MFR OF FIRE BRICK & SEWER PIPES.  
 2 NIGHT WATCHMEN, HEAT, STEAM, STONES, POWER, STEAM, LIGHT, FURNACE, COIL OIL LAMPS, 60 FT. HOSE, 1000 WATER BARRELS, 1000 FIRE PAILS, 1000 IN. TANK, SECOND FLOOR OF ENG. RM., WATER TAKEN FROM CANAL, DRY RYS HEATED BY STEAM, DAYTIME EXHAUST STEAM, NIGHTTIME LIVE.

LOGAN GAS LIGHT & COKE CO.  
 1000 TONS IN PREMISES, 60 1/4" HOSE ATTACH TO ST. PUMP, DRAWING FROM DEWING FROM DRIVEN WELL IN CANAL.

Scale of Feet.  
 0 50 100 150