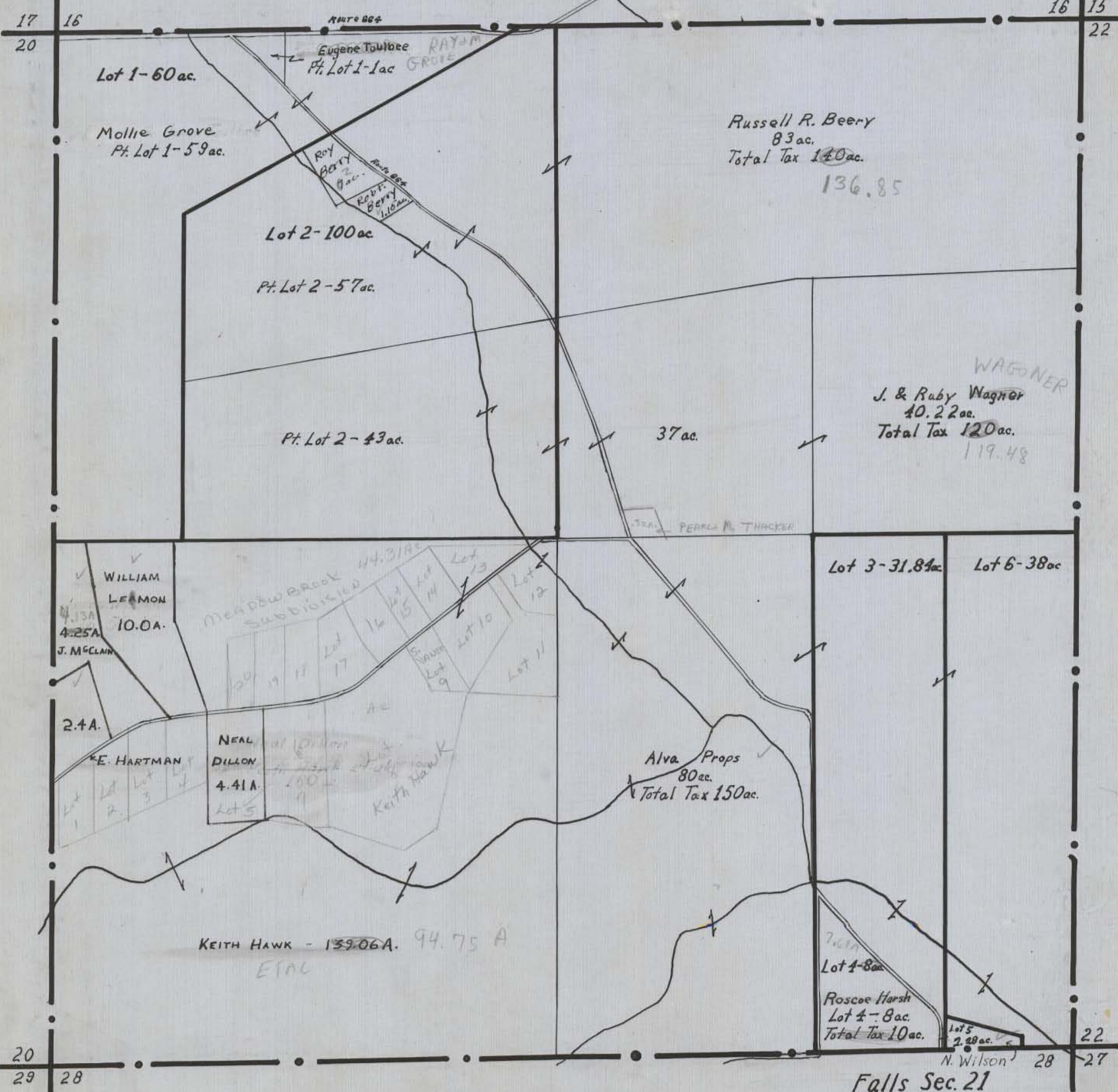


# HOCKING COUNTY STATE OHIO

Section 21 Twp. 14 Range 17

Falls Sec 21



17  
20

16

16  
15  
22

Lot 1-60 ac.

Mollie Grove  
Pt. Lot 1-59 ac.

Eugene Toulbee  
Pt. Lot 1-1 ac  
RAYSON GROVE

Russell R. Beery  
83 ac.  
Total Tax 140 ac.  
136.85

Lot 2-100 ac

Pt. Lot 2-57 ac.

Pt. Lot 2-43 ac.

37 ac.

WAGNER  
J. & Ruby Wagner  
40.22 ac.  
Total Tax 120 ac.  
119.48

WILLIAM  
LEAMON  
4.13A  
4.25A  
10.0A.  
J. McCLAIN

MEADOW BROOK  
SUBDIVIDED 44.31 ac  
Lot 9  
Lot 10  
Lot 11  
Lot 12  
Lot 13  
Lot 14  
Lot 15  
Lot 16  
Lot 17

Lot 3-31.81 ac

Lot 6-38 ac

2.4A.

E. HARTMAN

NEAL  
DILLON  
4.41A  
Lot 5

Alva Props  
80 ac.  
Total Tax 150 ac.

KEITH HAWK - 139.06A. 94.75 A  
ETAL

Lot 4-8 ac  
Roscoe Harsh  
Lot 4-8 ac.  
Total Tax 10 ac.

Lot 5  
2.28 ac.  
N. Wilson

20  
29  
28

22  
28  
27

Falls Sec. 21