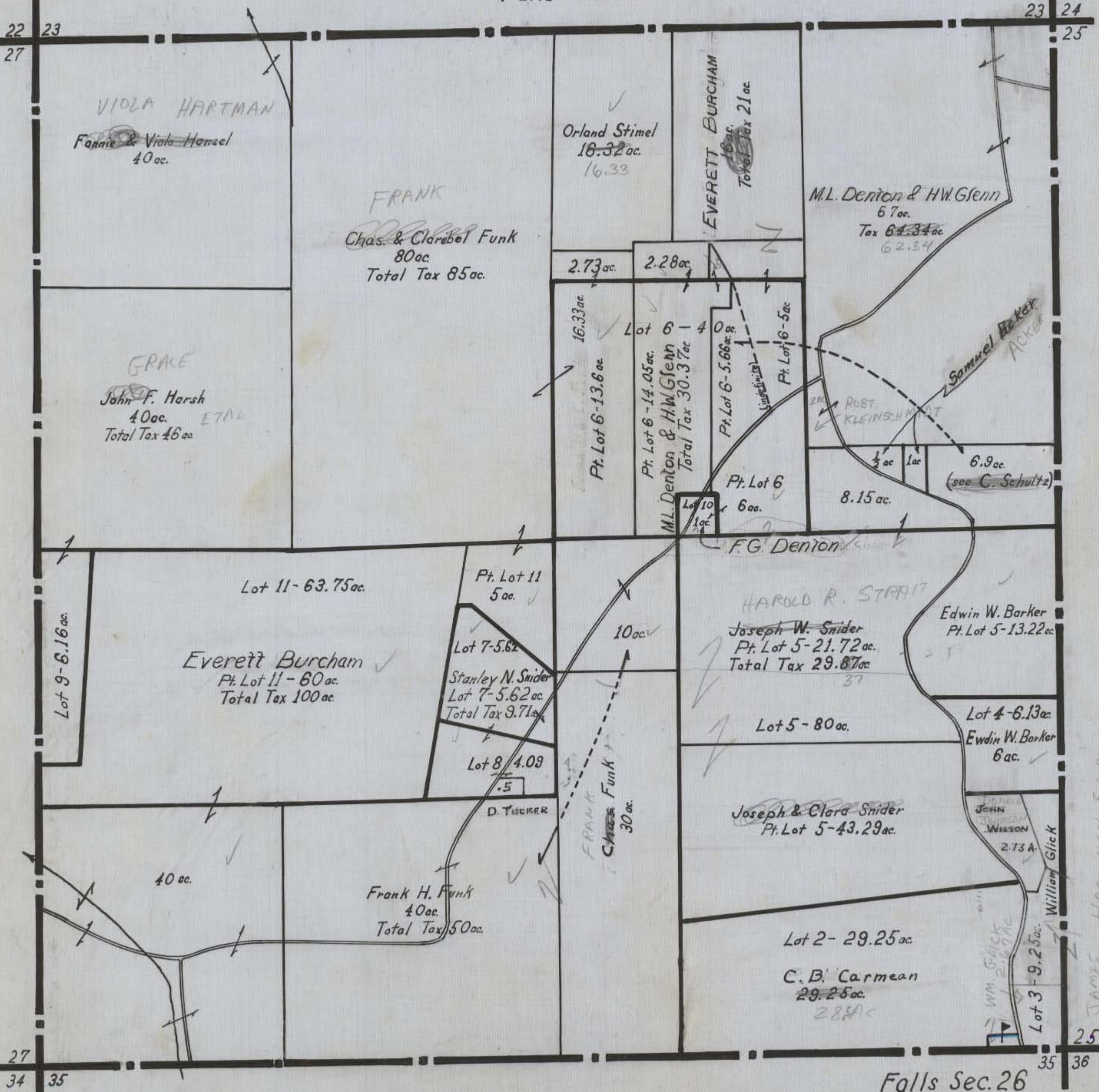


HOCKING COUNTY STATE OHIO

Section 26 Twp. 14 Range 17

Falls Sec. 26



VIOLA HARTMAN
~~Fannie & Viola Hensel~~
40 ac.

Orland Stimel
16.32 ac.
16.33

EVERETT BURCHAM
16 ac.
Total Tax 21 ac.

M.L. Denton & H.W. Glenn
67 ac.
Tax 64.34 ac.
62.34

FRANK
~~Chas. & Corabel Funk~~
80 ac.
Total Tax 85 ac.

GRACE
~~John F. Harsh~~
40 ac. ETAL
Total Tax 46 ac.

2.73 ac.

2.28 ac.

16.33 ac.
Pt. Lot 6-13.6 ac.

Lot 6-40 ac.
Pt. Lot 6-14.05 ac.
M.L. Denton & H.W. Glenn
Total Tax 30.37 ac.

Pt. Lot 6-5.66 ac.
Pt. Lot 6-5 ac.

Samuel Baker
ACKER

ROBT. KLEINSCHMIDT

Pt. Lot 6
6 ac.

8.15 ac.
6.9 ac.
(see C. Schultz)

Lot 11-63.75 ac.

Pt. Lot 11
5 ac.

Everett Burcham
Pt. Lot 11-60 ac.
Total Tax 100 ac.

Lot 7-5.62
Stanley N. Snider
Lot 7-5.62 ac.
Total Tax 9.71 ac.

10 ac.

F.G. Denton

HAROLD R. STRAIT
Joseph W. Snider
Pt. Lot 5-21.72 ac.
Total Tax 29.87 ac.
37

Edwin W. Barker
Pt. Lot 5-13.22 ac.

Lot 9-6.16 ac.

Lot 8-4.09
.5

D. TUCKER

Frank H. Funk
40 ac.
Total Tax 50 ac.

FRANK
Chas. Funk
30 ac.

Lot 5-80 ac.

Joseph & Clara Snider
Pt. Lot 5-43.29 ac.

Lot 4-6.13 ac.
Edwin W. Barker
6 ac.

JOHN WILSON
2.73 ac.

40 ac.

Lot 2-29.25 ac.

C.B. Carmean
29.25 ac.
28.5 ac.

Lot 3-9.25 ac.

Wm. Glick
2.69 ac.

William Glick

JAMES HARTMAN 5.6 ac.

Falls Sec. 26