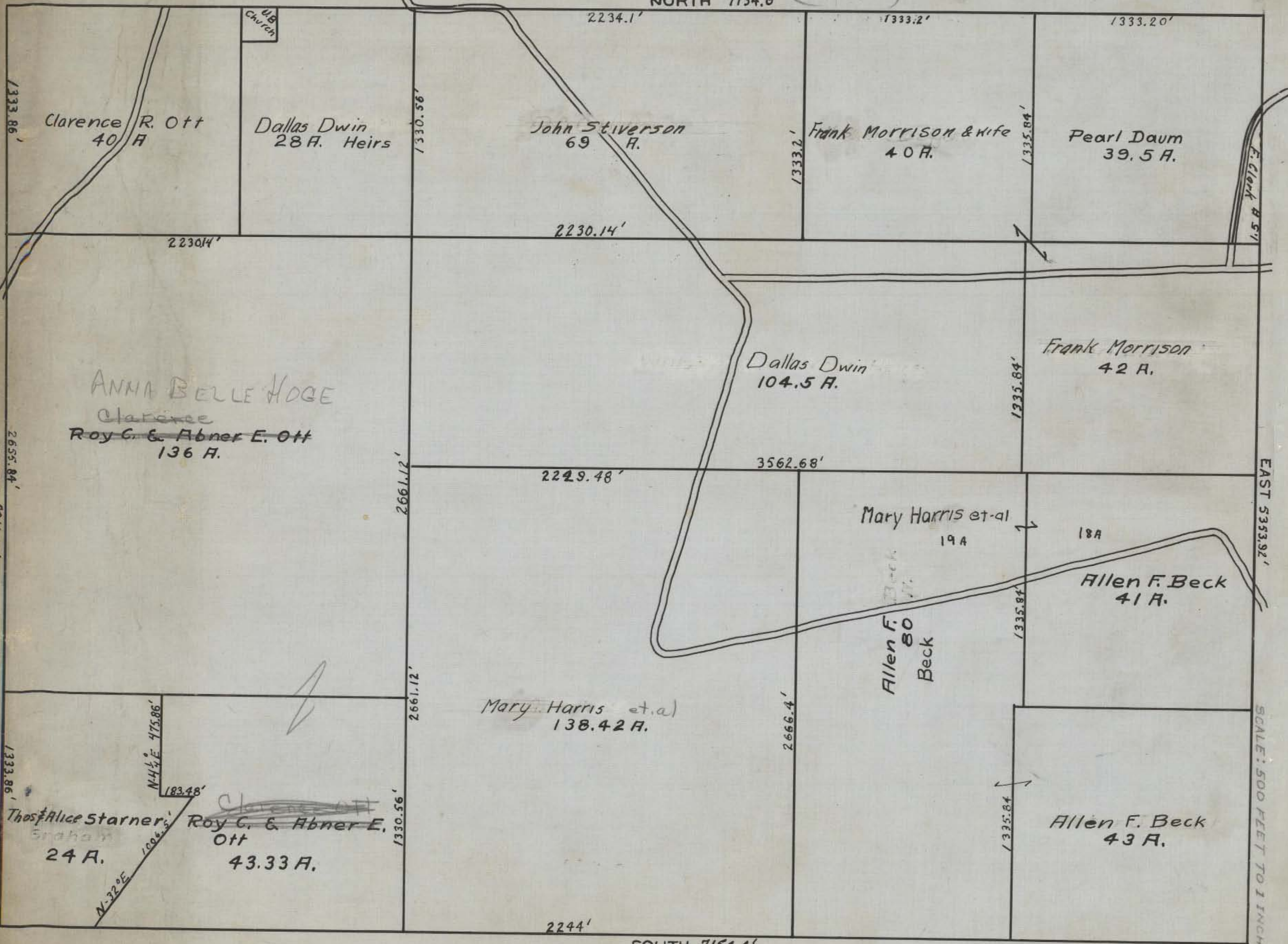


NORTH 7134.6'

(O.K. 64  
H.J.)



Clarence R. Ott  
40 A

Dallas Dwin  
28 A. Heirs

John Stiverson  
69 A.

Frank Morrison & wife  
40 A.

Pearl Daum  
39.5 A.

ANNA BELLE HOGE  
Clarence  
Roy C. & Abner E. Ott  
136 A.

Dallas Dwin  
104.5 A.

Frank Morrison  
42 A.

Mary Harris et al  
19 A

Allen F. Beck  
41 A.

Mary Harris et al  
138.42 A.

Allen F. Beck  
80 A.

Alice Starner  
24 A.

Roy C. & Abner E. Ott  
43.33 A.

Allen F. Beck  
43 A.

SOUTH 7154.4'

EAST 5353.92'  
SCALE: 500 FEET TO 1 INCH

WEST 5311.68'

UB Church

F. Clark # 51

1333.86'

N 41 1/4 E 475.86'

183.48'

1006.5'

N 32° E

2655.84'

2230.14'

2230.14'

2234.1'

1333.2'

1333.20'

1330.56'

1333.2'

1335.84'

2230.14'

2230.14'

2229.48'

3562.68'

2661.12'

2661.12'

1335.84'

1335.84'

2666.4'

1335.84'

1330.56'

2244'