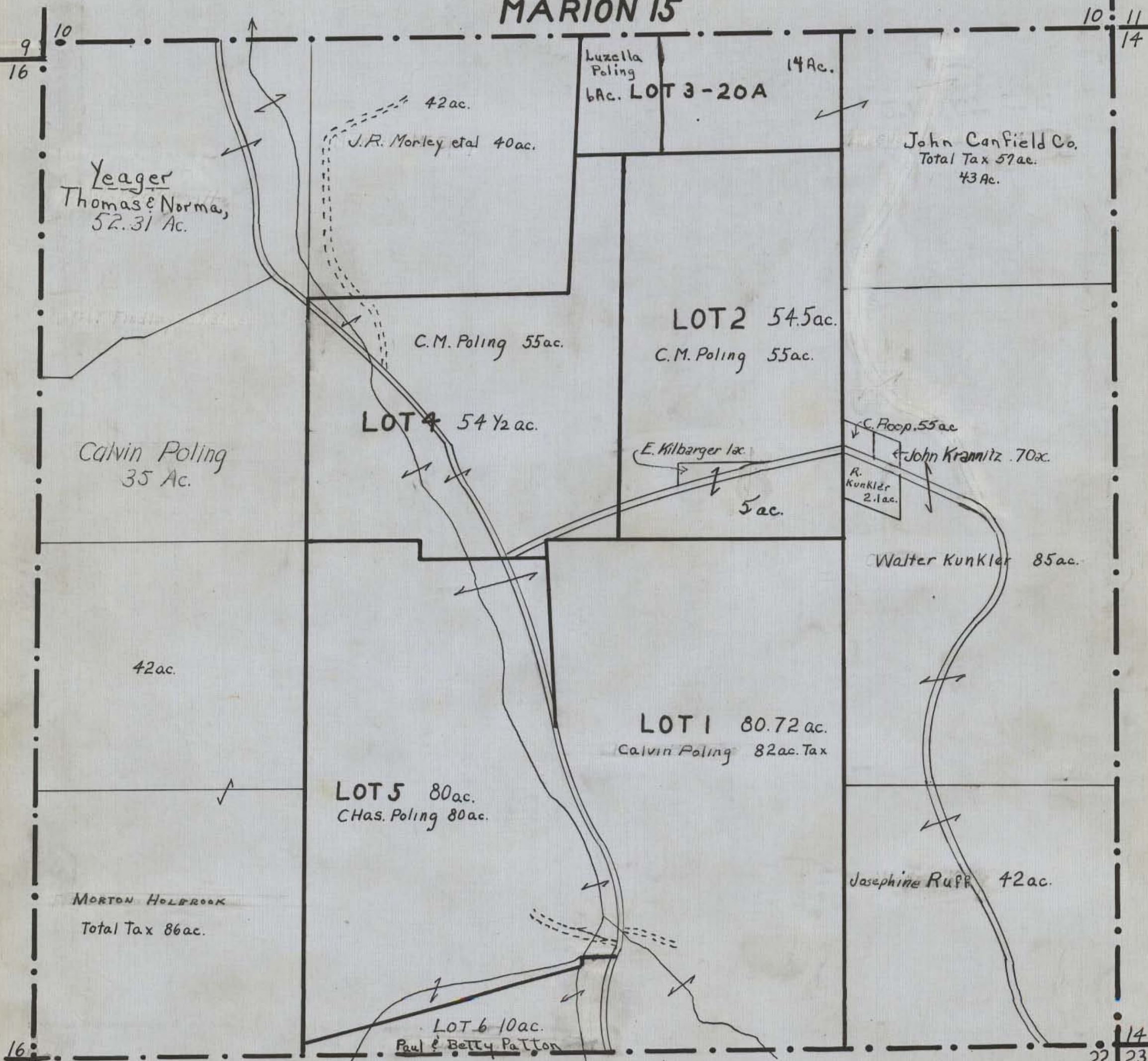


HOCKING COUNTY STATE OHIO
SECTION 15 TWP 15 RANGE 17

MARION 15



Yeager
Thomas & Norma,
52.31 Ac.

42 ac.
J.R. Morley et al 40 ac.

Luzella
Poling
14 Ac.
6 Ac. LOT 3-20A

John Canfield Co.
Total Tax 57 ac.
43 Ac.

LOT 2 54.5 ac.
C.M. Poling 55 ac.

Calvin Poling
35 Ac.

LOT 4 54 1/2 ac.

E. Kilbarger 1 ac.

C. Hoop 55 ac

John Krannitz .70 ac.

R. Kunkler
2.1 ac.

5 ac.

Walter Kunkler 85 ac.

42 ac.

LOT 1 80.72 ac.
Calvin Poling 82 ac. Tax

LOT 5 80 ac.
CHas. Poling 80 ac.

MORTON HOLBROOK
Total Tax 86 ac.

Josephine Ruff 42 ac.

LOT 6 10 ac.
Paul & Betty Patton

MARION 15