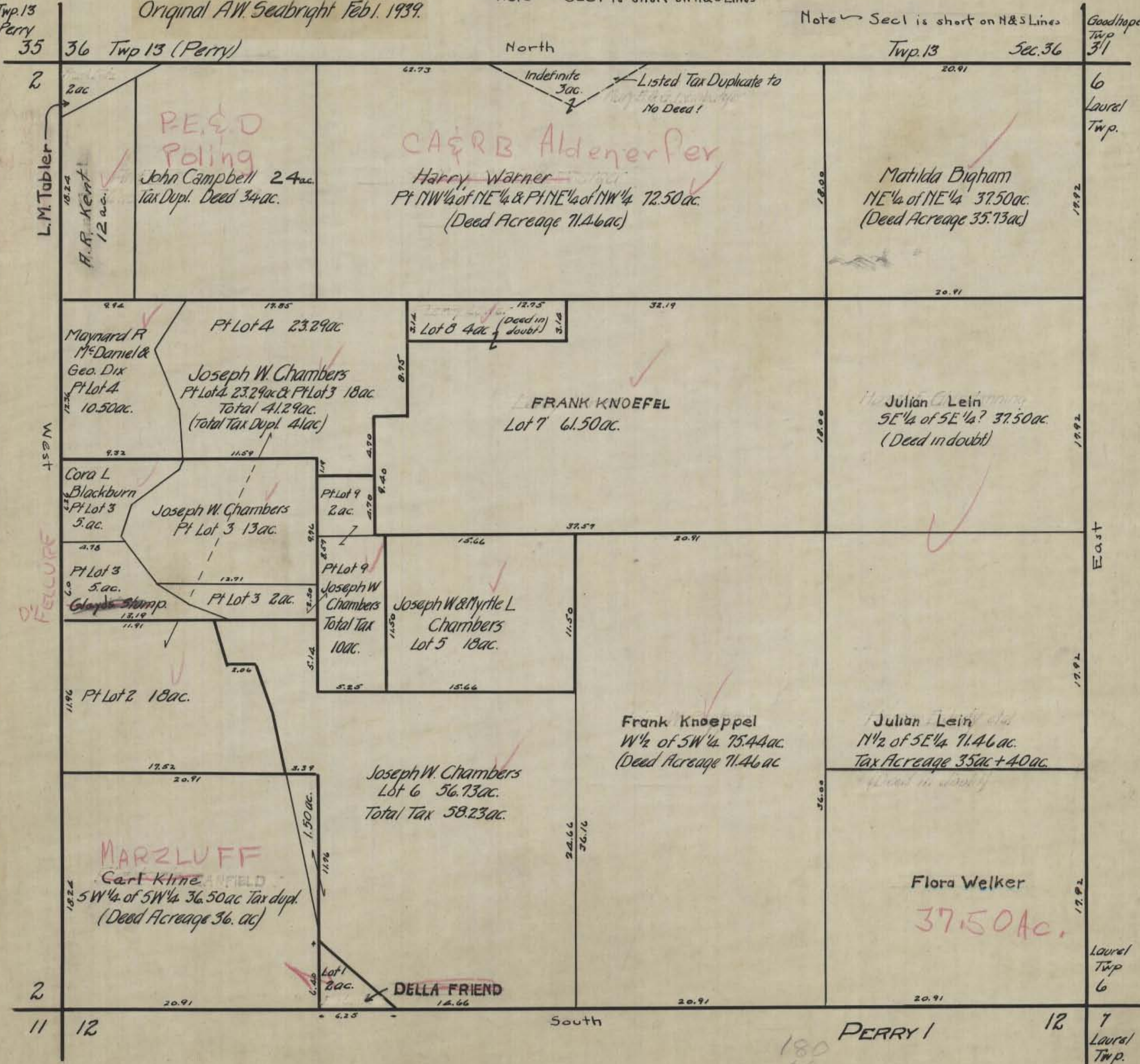


PERRY

Note - Secl is short on N&S Lines

Note - Secl is short on N&S Lines

Original A.W. Seabright Feb. 1. 1939.



REED Poling
John Campbell 2.4 ac.
Tax Dupl. Deed 3.4 ac.

CA&RB Aldener Per
Harry Warner
Pt NW 1/4 of NE 1/4 & Pt NE 1/4 of NW 1/4 72.50 ac.
(Deed Acreage 71.46 ac)

Matilda Bigham
NE 1/4 of NE 1/4 37.50 ac.
(Deed Acreage 35.73 ac)

Joseph W. Chambers
Pt Lot 4 23.29 ac & Pt Lot 3 18 ac
Total 41.29 ac.
(Total Tax Dupl. 41 ac)

FRANK KNOEFEL
Lot 7 61.50 ac.

Julian Lein
SE 1/4 of SE 1/4? 37.50 ac.
(Deed in doubt)

Joseph W. Chambers
Pt Lot 3 13 ac.

Pt Lot 9 2 ac.

Pt Lot 9
Joseph W. Chambers
Total Tax 10 ac.

Joseph W & Myrtle L. Chambers
Lot 5 18 ac.

Frank Knoepfel
W 1/2 of SW 1/4 75.44 ac.
(Deed Acreage 71.46 ac)

Julian Lein
N 1/2 of SE 1/4 71.46 ac.
Tax Acreage 35 ac + 40 ac.

Joseph W. Chambers
Lot 6 56.73 ac.
Total Tax 58.23 ac.

Flora Welker
37.50 ac.

MARZLUFF
Carl Kline
SW 1/4 of SW 1/4 36.50 ac Tax dupl.
(Deed Acreage 36. ac)

DELLA FRIEND
Lot 1 2 ac.

Goodhope Twp 31

6 Laurel Twp.

East

Laurel Twp 6

7 Laurel Twp.

Twp. 13 Perry 35

36 Twp 13 (Perry)

Twp. 13 Sec. 36

North

South

PERRY 1

12

2

11 12

7