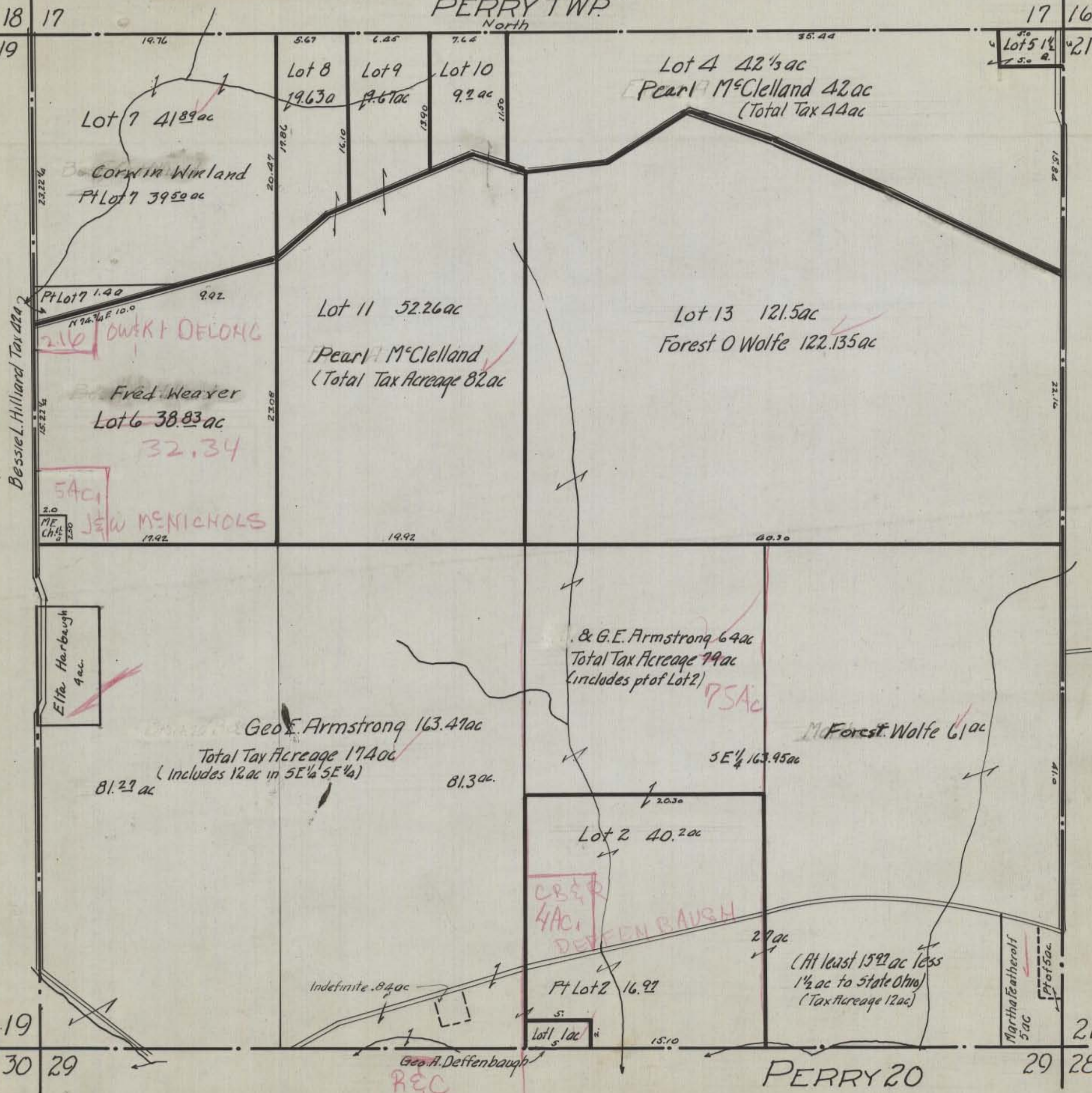


# HOCKING COUNTY STATE OHIO

Sec 20 TWP 12 RANGE 19  
PERRY TWP

A.W.S Dec 1944

North



Bessie L. Hilliard Tax 22a

Elta Harbaugh 9 ac

19

30

17

29

19.76

5.67

6.25

7.64

35.44

17

16

Lot 5 1 1/2 ac

21

Lot 7 41.89 ac

Lot 8 19.63 ac

Lot 9 9.67 ac

Lot 10 9.2 ac

Lot 4 42 1/3 ac  
Pearl McClelland 42 ac  
(Total Tax 44 ac)

Corwin Wikland  
Pt Lot 7 39.50 ac

Lot 11 52.26 ac

Lot 13 121.5 ac

Pearl McClelland  
(Total Tax Acreage 82 ac)

Forest O Wolfe 122.135 ac

Fred Weaver  
Lot 6 38.83 ac

32.34

5 ac

JEW MICHOLS

17.92

19.92

40.30

Elta Harbaugh 9 ac

& G.E. Armstrong 64 ac  
Total Tax Acreage 79 ac  
(includes pt of Lot 2)

75 ac

Geo F. Armstrong 163.47 ac

Total Tax Acreage 174 ac  
(Includes 12 ac in SE 1/4 SE 1/4)

McForest Wolfe 61 ac

81.27 ac

81.30 ac

SE 1/4 163.95 ac

Lot 2 40.2 ac

CB&P  
4 ac

DEFFENBAUGH

Indefinite .84 ac

Pt Lot 2 16.97

(At least 15.97 ac less  
1 1/2 ac to State Ohio)  
(Tax Acreage 12 ac)

Lot 1 1 ac

Martha Featherolf  
5 ac

Geo. A. Deffenbaugh  
REC

PERRY 20

29

28

15.84

21.10

41.0