

# HOCKING COUNTY STATE OHIO

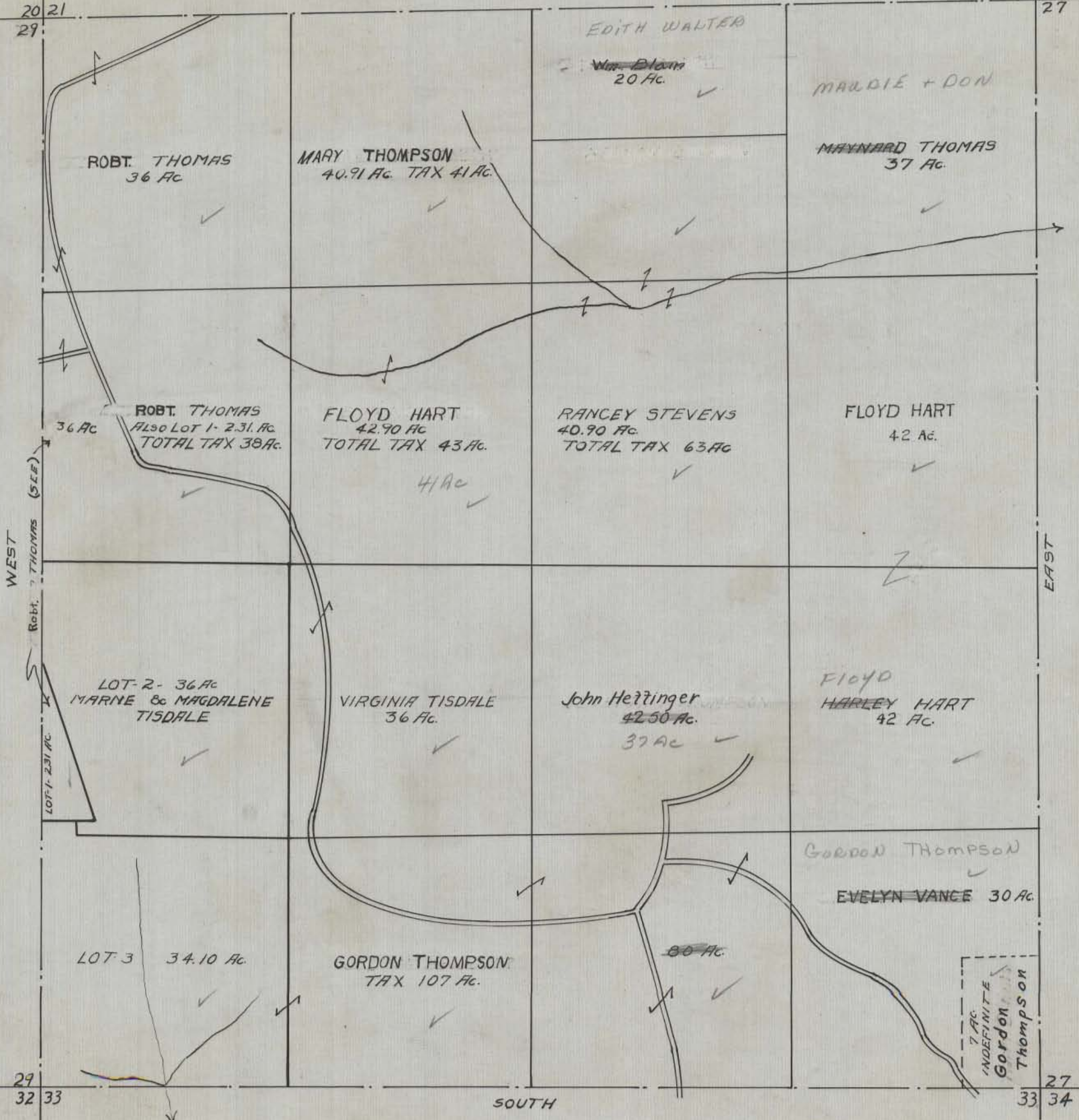
SEC. 28 TWP. 11 RANGE 19

SALTCREEK 28

NORTH

SCALE 500. FT = 1 INCH

21 22  
27



20 21  
29

ROBT. THOMAS  
36 Ac

MARY THOMPSON  
40.91 Ac. TAX 41 Ac.

EDITH WALTER  
~~Was. Bloom~~  
20 Ac

MAUDIE + DON  
MAYNARD THOMAS  
37 Ac.

ROBT. THOMAS  
36 Ac  
Also Lot 1 - 2.31 Ac  
TOTAL TAX 38 Ac.

FLOYD HART  
42.90 Ac  
TOTAL TAX 43 Ac.  
41 Ac

RANCEY STEVENS  
40.90 Ac  
TOTAL TAX 63 Ac

FLOYD HART  
42 Ac.

WEST  
Robt. Thomas (SEE)  
LOT-1- 2.31 Ac

LOT-2- 36 Ac  
MARNE & MAGDALENE  
TISDALE

VIRGINIA TISDALE  
36 Ac.

John Hezinger  
42.50 Ac.  
37 Ac

FLOYD  
HARLEY HART  
42 Ac.

LOT 3 34.10 Ac.

GORDON THOMPSON  
TAX 107 Ac.

GORDON THOMPSON  
EVELYN VANCE 30 Ac.

30 Ac

7 Ac  
INDEFINITE  
Gordon  
Thompson

29  
32 33

SOUTH

27  
33 34

SALTCREEK 28